

3DMARK®

PCMARK 10

SCORE

5 369 with **Generic VGA(1x)** and **Intel Core i7-1265U Processor**

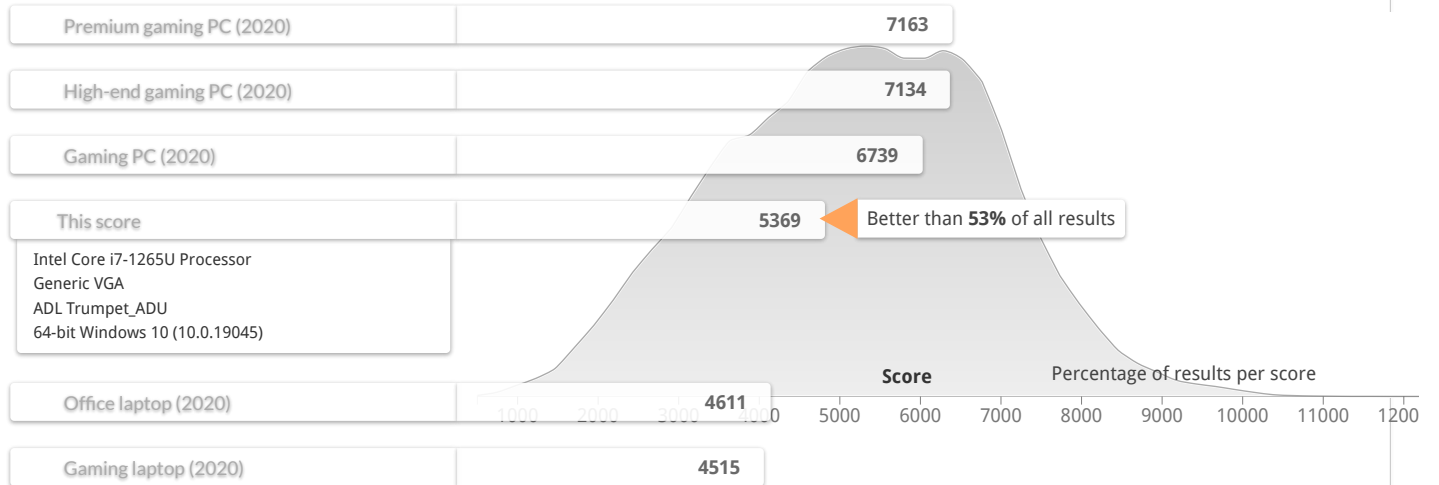
GRAPHICS CARD IS NOT RECOGNIZED

Web Score	9 379	Apps Score	16 449	Chat Score	7 888
Photo Score	9 839	Video Score	4 657	Writing Score	8 180
Rendering and Visualization Score	3 074	Spreadsheet Score	6 998	Essentials	10 676
		Productivity	7 565	Digital Content Creation	5 202

[Share this result](#) [Add to compare](#)

RUN DETAILS

OTHER RESULTS IN PCMARK 10 RUN



Intel Core i7-1265U Processor
 Generic VGA
 ADL Trumpet_ADU
 64-bit Windows 10 (10.0.19045)

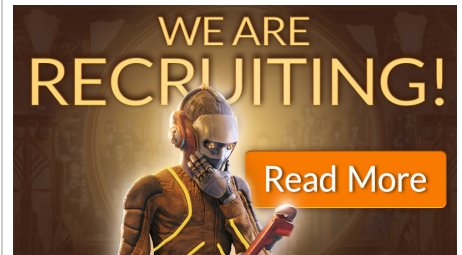
Name DESKTOP-I74H4SB_2023-03-31 00:27:25.0
Description
User Nex Computer S.A.S

OPENCL DEVICES

Video Conferencing Intel(R) Iris(R) Xe Graphics
Spreadsheets CPU
Photo Editing Intel(R) Iris(R) Xe Graphics
Video Editing Intel(R) Iris(R) Xe Graphics

GRAPHICS CARD

Graphics Card Generic VGA
Vendor Acer



COMPARE

1

Add results

Clear

Compare

Average memory clock frequency	N/A
Average temperature	N/A
Driver version	30.0.101.1960
Driver status	Approved

PROCESSOR

Processor	Intel Core i7-1265U Processor
Clock frequency	4.789 MHz (1.800 MHz)
Average clock frequency	N/A
Average temperature	N/A
Physical / logical processors	1 / 12
# of cores	10
Package	FCBGA1744
Manufacturing process	7 nm
TDP	15 W

GENERAL

Operating system	64-bit Windows 10 (10.0.19045)
Motherboard	ADL Trumpet_ADU
Memory	16.384 MB
Module 1	8.192 MB Samsung DDR4 @ 2.660 MHz
Module 2	8.192 MB SK Hynix DDR4 @ 2.660 MHz
Hard drive model	1.000 GB NVMe WD Green SN350 1TB
VBS status	Running
HVCI status	Disabled

PCMark 10

5 249

Essentials

9 823

Apps Start-up score

12 799

Video Conferencing Score

8 007

Web Browsing Score

9 249

Productivity

7 097

Spreadsheets Score

6 799

Writing Score

7 409

Digital Content Creation

5 632

Photo Editing Score

9 750

Rendering and Visualization Score

2 998

Video Editing Score

6 113

Validation

VALID

Run information

Result name

ACER_TRAVELMATE_TM214_NXVY3AL00124203B097600_2023-05-29 17:

Result details

SystemInfo Version

5.61.1173

UI Version

2.1.2600 64

Test Version

1.0

Date

May 29 2023

Duration

26 m 53 s

Id

046ac1eb-baa9-45c9-aef5-50f90e248be5

Test settings

Default settings used

Yes

Additional output

Video Conferencing

Video Encoder, Intel® Quick Sync Video H.264 Encoder MFT

Video Conferencing

OpenCL, Intel(R) Iris(R) Xe Graphics

Spreadsheets

OpenCL, CPU

Photo Editing

OpenCL, Intel(R) Iris(R) Xe Graphics

Video Editing

OpenCL, Intel(R) Iris(R) Xe Graphics

System details

General

Operating System	Windows 10 Pro 64-bit 10.0.19045
Motherboard	ADL Trumpet_ADU
Memory	16384 MB
BIOS	INSYDE Corp. V1.05
System Drive Model	
Resolution	1280 x 720 px
Power plan	Equilibrado

Processor

CPU	12th Gen Intel(R) Core(TM) i7-1265U
Clock Frequency	1800 MHz
Max Frequency	4789 MHz
Processors	1
Cores	10 (12)
Package	Socket 1744 FCBGA

Graphic adapters

GPU	Intel(R) Iris(R) Xe Graphics
Manufacturer	Intel
Dedicated Video Memory	
Total Available Graphics Memory	8192 MB
Core Clock	1247 MHz
Boost Clock	1247 MHz
Memory Clock	2667 MHz
Driver Version	30.0.101.1960
Display 1	\\.\DISPLAY1 (1920 x 1080, 150% DPI scaling)

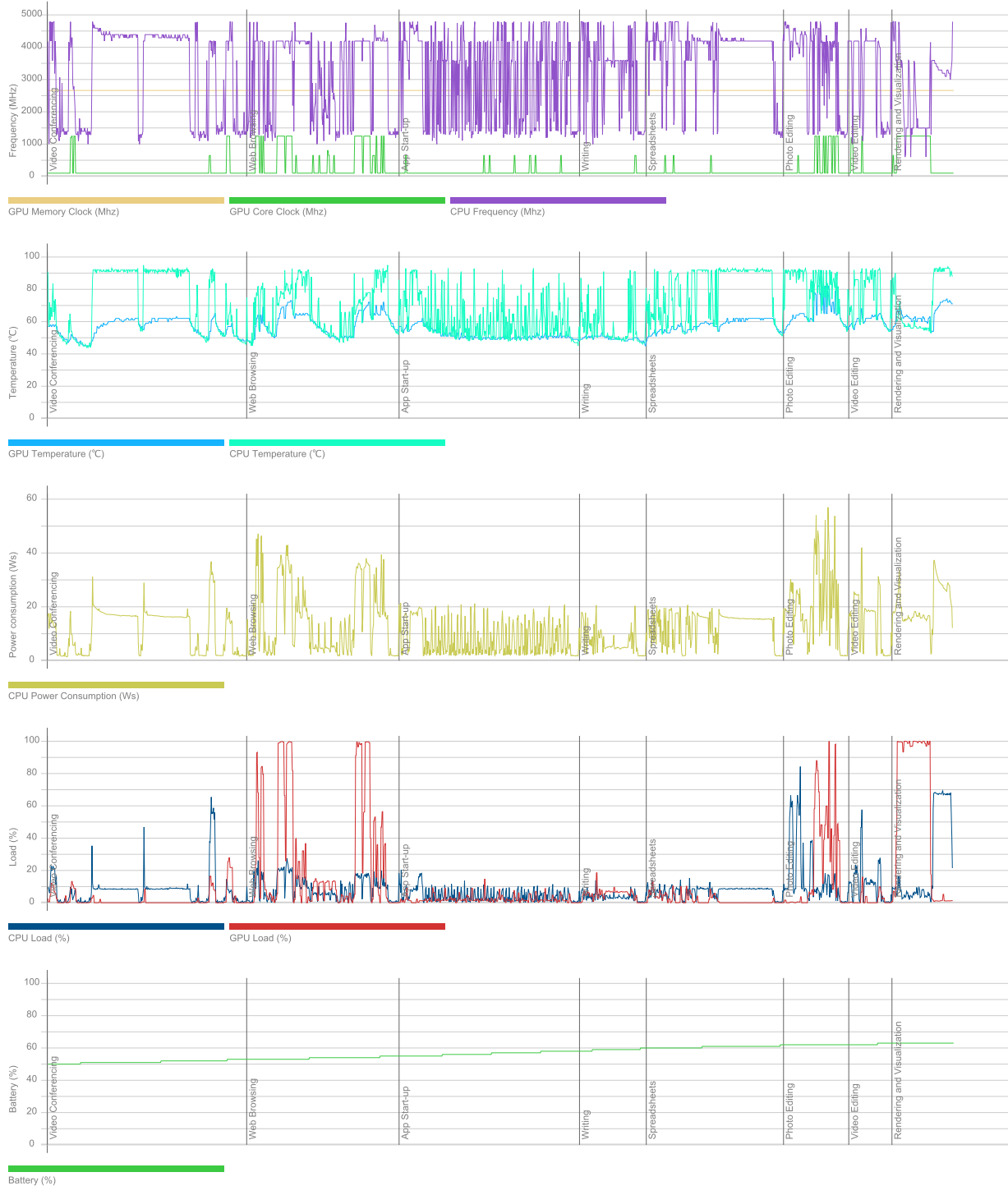
Storage devices

Drive -1	476 GB
Drive model	SAMSUNG MZVLQ512HBLU-00B00
Drive type	SSD
External drive	No (SCSI)
Drive 0	465 GB
Drive model	CT500BX500SSD1
Drive type	SSD
External drive	No (IDE)
Partition 0	100 MB
Partition 1	C: (NTFS) 465 GB (425 GB free)
Partition 2	535 MB

Batteries

Battery	AP18C8K
Manufacturer	LGC
Type	Lithium-ion
Cycle count	0
Designed capacity	48004 mWh
Full charged capacity	50299 mWh
Wear level	-4,8%

Hardware monitoring



PCMark 10

5 131

Essentials

9 733

Apps Start-up score

11 981

Video Conferencing Score

8 359

Web Browsing Score

9 208

Productivity

7 034

Spreadsheets Score

6 545

Writing Score

7 560

Digital Content Creation

5 355

Photo Editing Score

9 542

Rendering and Visualization Score

2 913

Video Editing Score

5 525

Validation

VALID

Run information

Result name

ACER_TRAVELMATE_TM214_SN_NXVY3AL00124203AF17600_2023-05-29

Result details

SystemInfo Version

5.61.1173

UI Version

2.1.2600 64

Test Version

1.0

Date

May 29 2023

Duration

25 m 35 s

Id

fcc30349-079f-47bf-9ca5-f91715f0cf78

Test settings

Default settings used

Yes

Additional output

Video Conferencing

Video Encoder, Intel® Quick Sync Video H.264 Encoder MFT

Video Conferencing

OpenCL, Intel(R) Iris(R) Xe Graphics

Spreadsheets

OpenCL, CPU

Photo Editing

OpenCL, Intel(R) Iris(R) Xe Graphics

Video Editing

OpenCL, Intel(R) Iris(R) Xe Graphics

System details

General

Operating System	Windows 10 Pro 64-bit 10.0.19045
Motherboard	ADL Trumpet_ADU
Memory	16384 MB
BIOS	INSYDE Corp. V1.05
System Drive Model	
Resolution	1280 x 720 px
Power plan	Equilibrado

Processor

CPU	12th Gen Intel(R) Core(TM) i7-1265U
Clock Frequency	1800 MHz
Max Frequency	4789 MHz
Processors	1
Cores	10 (12)
Package	Socket 1744 FCBGA

Graphic adapters

GPU	Intel(R) Iris(R) Xe Graphics
Manufacturer	Intel
Dedicated Video Memory	
Total Available Graphics Memory	8192 MB
Core Clock	1247 MHz
Boost Clock	1247 MHz
Memory Clock	2667 MHz
Driver Version	30.0.101.1960
Display 1	\\.\DISPLAY1 (1920 x 1080, 150% DPI scaling)

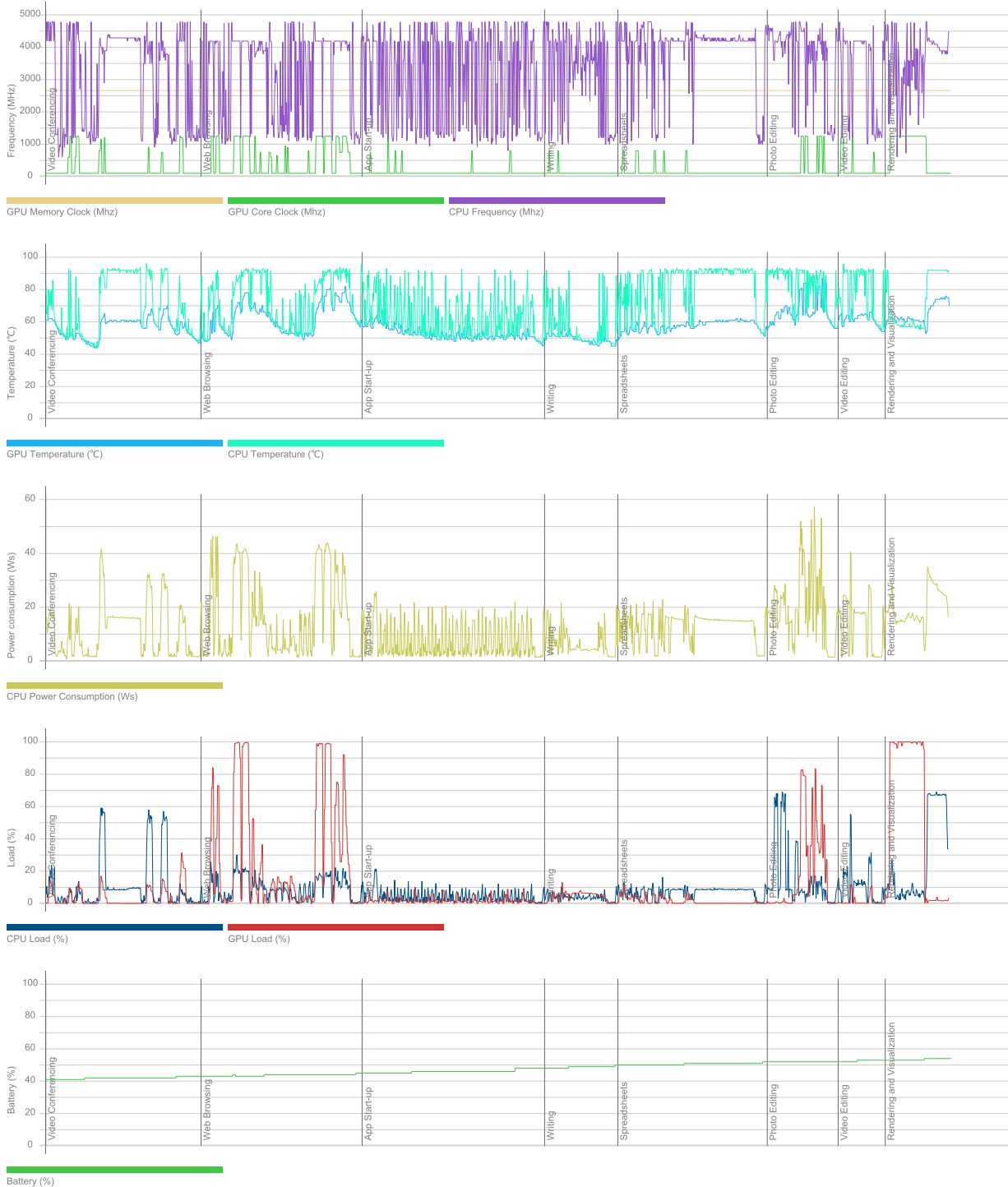
Storage devices

Drive -1	476 GB
Drive model	SAMSUNG MZVLQ512HBLU-00B00
Drive type	SSD
External drive	No (SCSI)
Drive 0	465 GB
Drive model	CT500BX500SSD1
Drive type	SSD
External drive	No (IDE)
Partition 0	100 MB
Partition 1	C: (NTFS) 465 GB (427 GB free)
Partition 2	535 MB

Batteries

Battery	AP18C8K
Manufacturer	LGC
Type	Lithium-ion
Cycle count	0
Designed capacity	48004 mWh
Full charged capacity	50299 mWh
Wear level	-4,8%

Hardware monitoring



PCMark 10

5 314

Essentials

10 147

Apps Start-up score

13 534

Video Conferencing Score

7 989

Web Browsing Score

9 664

Productivity

7 240

Spreadsheets Score

6 720

Writing Score

7 801

Digital Content Creation

5 543

Photo Editing Score

9 792

Rendering and Visualization Score

3 114

Video Editing Score

5 588

Validation

VALID

Run information

Result name

ACER_TRAVELMATE_TMP214_NXVY3AL00124203ABA7600_2023-05-29 09

Result details

SystemInfo Version

5.63.1186

UI Version

2.1.2600 64

Test Version

1.0

Date

May 29 2023

Duration

25 m 56 s

Id

2d9d758b-a653-4e58-ad05-2feba43ddb56

Test settings

Default settings used

Yes

Additional output

Video Conferencing

Video Encoder, Intel® Quick Sync Video H.264 Encoder MFT

Video Conferencing

OpenCL, Intel(R) Iris(R) Xe Graphics

Spreadsheets

OpenCL, CPU

Photo Editing

OpenCL, Intel(R) Iris(R) Xe Graphics

Video Editing

OpenCL, Intel(R) Iris(R) Xe Graphics

System details

General

Operating System	Windows 10 Pro 64-bit 10.0.19045
Motherboard	ADL Trumpet_ADU
Memory	16384 MB
BIOS	INSYDE Corp. V1.05
System Drive Model	
Resolution	1536 x 864 px
Power plan	Equilibrado

Processor

CPU	12th Gen Intel(R) Core(TM) i7-1265U
Clock Frequency	1800 MHz
Max Frequency	4789 MHz
Processors	1
Cores	10 (12)
Package	Socket 1744 FCBGA

Graphic adapters

GPU	Intel(R) Iris(R) Xe Graphics
Manufacturer	Intel
Dedicated Video Memory	
Total Available Graphics Memory	8192 MB
Core Clock	1247 MHz
Boost Clock	1247 MHz
Memory Clock	2667 MHz
Driver Version	30.0.101.1960
Display 1	\\.\DISPLAY1 (1920 x 1080, 125% DPI scaling)

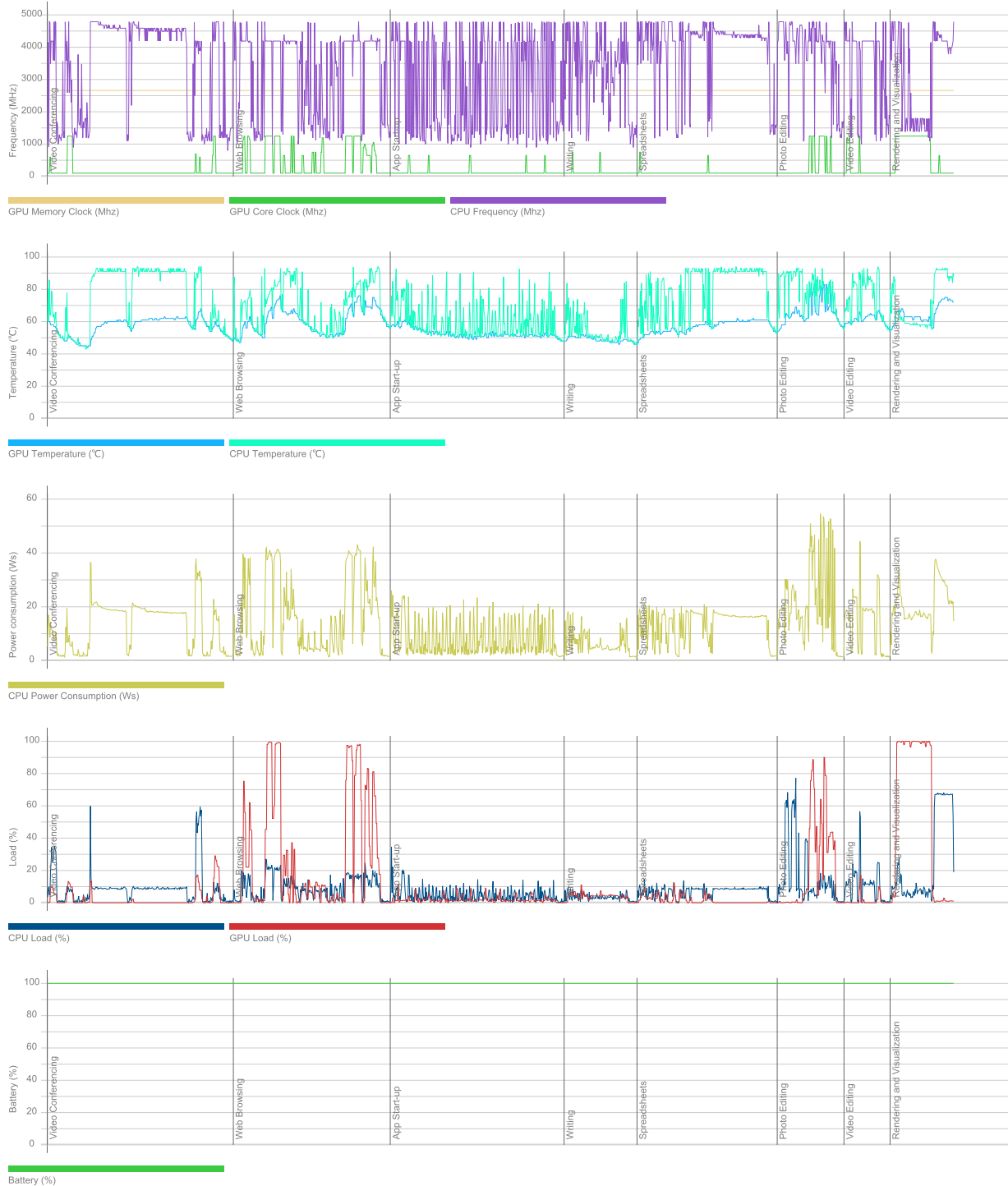
Storage devices

Drive -1	465 GB
Drive model	CT500BX500SSD1
Drive type	SSD
External drive	No (IDE)
Drive 1	476 GB
Drive model	SAMSUNG MZVLQ512HBLU-00B00
Drive type	SSD
External drive	No (SCSI)
Partition 0	100 MB
Partition 1	C: (NTFS) 476 GB (431 GB free)
Partition 2	543 MB

Batteries

Battery	AP18C8K
Manufacturer	LGC
Type	Lithium-ion
Cycle count	0
Designed capacity	48004 mWh
Full charged capacity	50299 mWh
Wear level	-4,8%

Hardware monitoring



PCMark 10

5 411

Essentials

10 457

Apps Start-up score

14 899

Video Conferencing Score

8 032

Web Browsing Score

9 557

Productivity

7 556

Spreadsheets Score

7 158

Writing Score

7 978

Digital Content Creation

5 442

Photo Editing Score

10 039

Rendering and Visualization Score

3 227

Video Editing Score

4 977

Validation

VALID

Run information

Result name

ACER_TRAVELMATE_TMP214_NXVY3AL00124203ADC7600_2023-05-26 1

Result details

SystemInfo Version

5.61.1173

UI Version

2.1.2600 64

Test Version

1.0

Date

May 26 2023

Duration

24 m 30 s

Id

2a113a9f-2175-4794-977d-c717c3fca521

Test settings

Default settings used

Yes

Additional output

Video Conferencing

Video Encoder, Intel® Quick Sync Video H.264 Encoder MFT

Video Conferencing

OpenCL, Intel(R) Iris(R) Xe Graphics

Spreadsheets

OpenCL, CPU

Photo Editing

OpenCL, Intel(R) Iris(R) Xe Graphics

Video Editing

OpenCL, Intel(R) Iris(R) Xe Graphics

System details

General

Operating System	Windows 10 Pro 64-bit 10.0.19045
Motherboard	ADL Trumpet_ADU
Memory	16384 MB
BIOS	INSYDE Corp. V1.09
System Drive Model	
Resolution	1536 x 864 px
Power plan	Equilibrado

Processor

CPU	12th Gen Intel(R) Core(TM) i7-1265U
Clock Frequency	1800 MHz
Max Frequency	4789 MHz
Processors	1
Cores	10 (12)
Package	Socket 1744 FCBGA

Graphic adapters

GPU	Intel(R) Iris(R) Xe Graphics
Manufacturer	Intel
Dedicated Video Memory	
Total Available Graphics Memory	8192 MB
Core Clock	1247 MHz
Boost Clock	1247 MHz
Memory Clock	2667 MHz
Driver Version	30.0.101.1960
Display 1	\\.\DISPLAY1 (1920 x 1080, 125% DPI scaling)

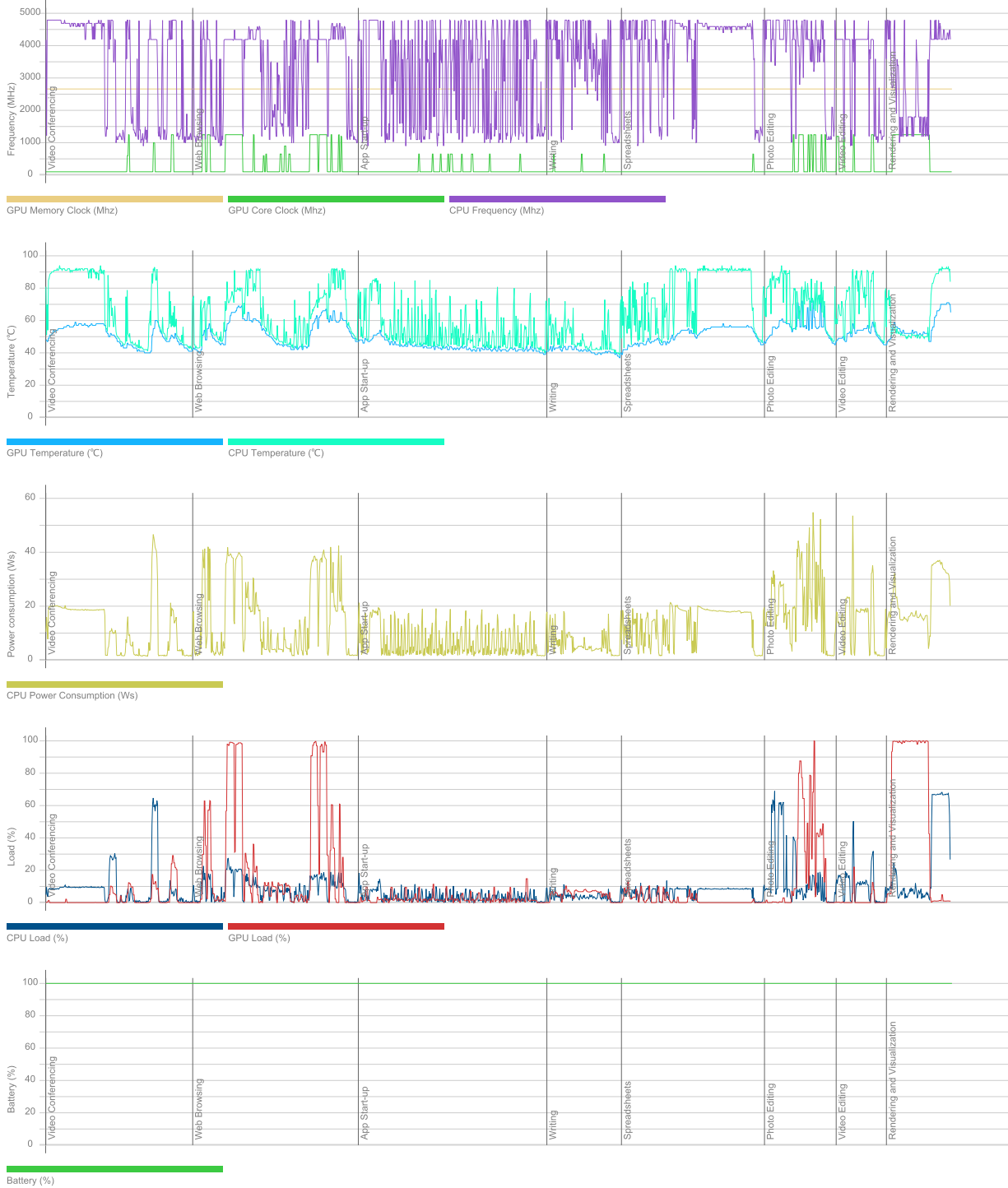
Storage devices

Drive -1	476 GB
Drive model	SAMSUNG MZVLQ512HBLU-00B00
Drive type	SSD
External drive	No (SCSI)
Drive 0	465 GB
Drive model	CT500BX500SSD1
Drive type	SSD
External drive	No (IDE)
Partition 0	100 MB
Partition 1	C: (NTFS) 465 GB (420 GB free)
Partition 2	543 MB

Batteries

Battery	AP18C8K
Manufacturer	LGC
Type	Lithium-ion
Cycle count	0
Designed capacity	48004 mWh
Full charged capacity	50299 mWh
Wear level	-4,8%

Hardware monitoring



PCMark 10

4 926

Essentials

9 970

Apps Start-up score

13 566

Video Conferencing Score

7 870

Web Browsing Score

9 285

Productivity

7 023

Spreadsheets Score

6 601

Writing Score

7 474

Digital Content Creation

4 634

Photo Editing Score

9 369

Rendering and Visualization Score

2 914

Video Editing Score

3 646

Validation

VALID

Run information

Result name

ACER_TRAVELMATE_TMP214_SNNXVY3AL00124203ABE7600_2023-05-30

Result details

SystemInfo Version

5.63.1186

UI Version

2.1.2600 64

Test Version

1.0

Date

May 30 2023

Duration

25 m 20 s

Id

757562ea-d95b-4b33-82d7-a2e5a758d70b

Test settings

Default settings used

Yes

Additional output

Video Conferencing

Video Encoder, Intel® Quick Sync Video H.264 Encoder MFT

Video Conferencing

OpenCL, Intel(R) Iris(R) Xe Graphics

Spreadsheets

OpenCL, CPU

Photo Editing

OpenCL, Intel(R) Iris(R) Xe Graphics

Video Editing

OpenCL, Intel(R) Iris(R) Xe Graphics

System details

General

Operating System	Windows 10 Pro 64-bit 10.0.19045
Motherboard	ADL Trumpet_ADU
Memory	16384 MB
BIOS	INSYDE Corp. V1.05
System Drive Model	
Resolution	1280 x 720 px
Power plan	Equilibrado

Processor

CPU	12th Gen Intel(R) Core(TM) i7-1265U
Clock Frequency	1800 MHz
Max Frequency	4788 MHz
Processors	1
Cores	10 (12)
Package	Socket 1744 FCBGA

Graphic adapters

GPU	Intel(R) Iris(R) Xe Graphics
Manufacturer	Intel
Dedicated Video Memory	
Total Available Graphics Memory	8192 MB
Core Clock	1247 MHz
Boost Clock	1247 MHz
Memory Clock	2667 MHz
Driver Version	30.0.101.1960
Display 1	\\.\DISPLAY1 (1920 x 1080, 150% DPI scaling)

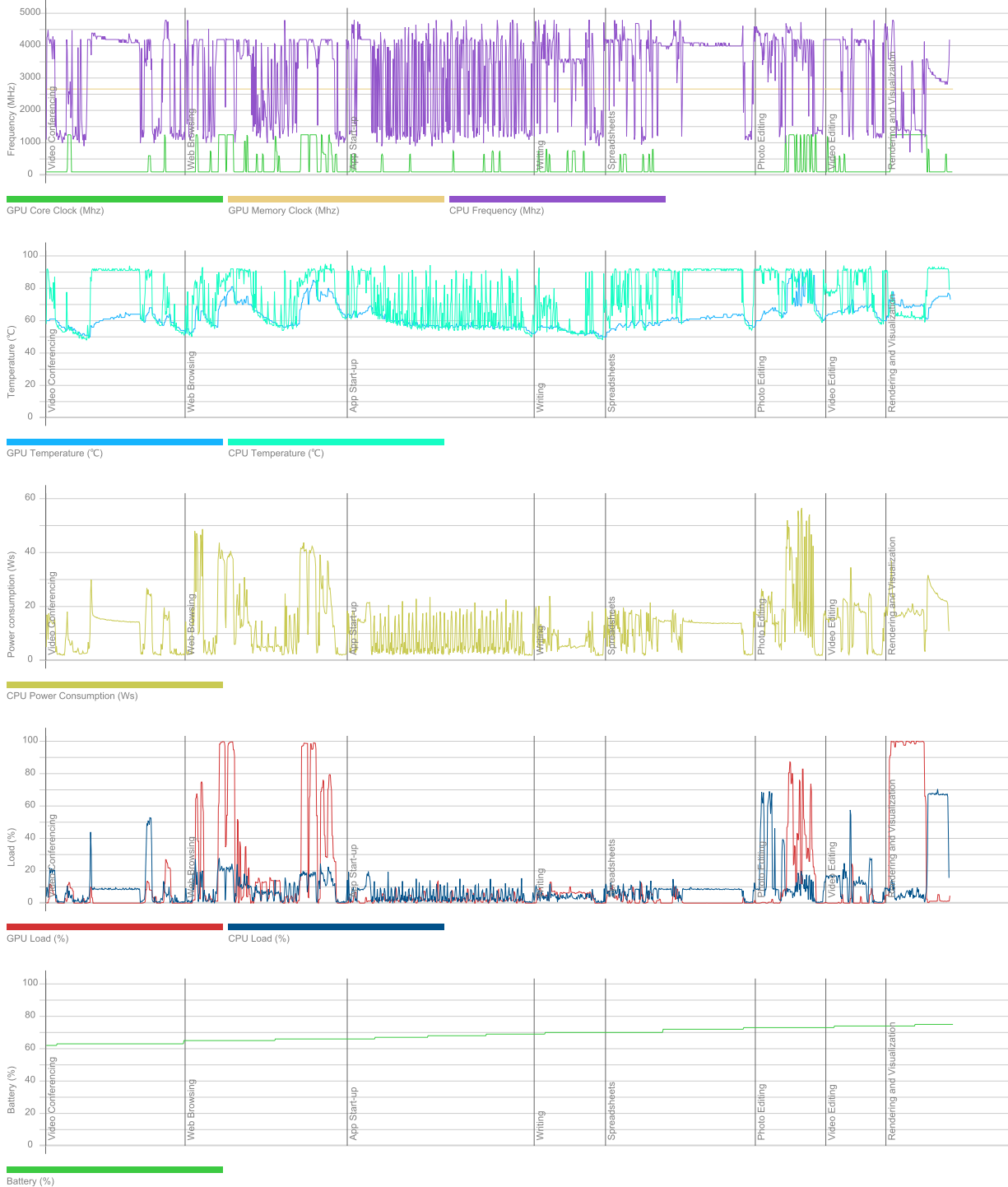
Storage devices

Drive -1	465 GB
Drive model	CT500BX500SSD1
Drive type	SSD
External drive	No (IDE)
Drive 1	476 GB
Drive model	SAMSUNG MZVLQ512HBLU-00B00
Drive type	SSD
External drive	No (SCSI)
Partition 0	100 MB
Partition 1	C: (NTFS) 476 GB (437 GB free)
Partition 2	535 MB
Drive 2	14,9 GB
Drive model	SanDisk Cruzer Force USB Device
Drive type	
External drive	Yes (USB)
Partition 0	D: (FAT32) 14,9 GB (5,0 GB free)

Batteries

Battery	AP18C8K
Manufacturer	LGC
Type	Lithium-ion
Cycle count	0
Designed capacity	48004 mWh
Full charged capacity	50299 mWh
Wear level	-4,8%

Hardware monitoring



PCMark 10

4 934

Essentials

9 620

Apps Start-up score

13 952

Video Conferencing Score

7 518

Web Browsing Score

8 489

Productivity

6 755

Spreadsheets Score

5 704

Writing Score

8 000

Digital Content Creation

5 017

Photo Editing Score

7 771

Rendering and Visualization Score

3 361

Video Editing Score

4 836

Validation

VALID

Run information

Result name

ASUS P1412CE_SN_N5NXC03666019F-0QQM3OT_2023-05-31 13:30:21

Result details

SystemInfo Version

5.63.1186

UI Version

2.1.2600 64

Test Version

1.0

Date

May 31 2023

Duration

23 m 40 s

Id

928e1b4b-006e-4c21-877c-11b3287dc578

Test settings

Default settings used

Yes

Additional output

Video Conferencing

Video Encoder, Intel® Quick Sync Video H.264 Encoder MFT

Video Conferencing

OpenCL, Intel(R) Iris(R) Xe Graphics

Spreadsheets

OpenCL, CPU

Photo Editing

OpenCL, Intel(R) Iris(R) Xe Graphics

Video Editing

OpenCL, Intel(R) Iris(R) Xe Graphics

System details

General

Operating System	Windows 11 64-bit 10.0.22621
Motherboard	ASUSTeK COMPUTER INC. P1412CEA
Memory	8192 MB
BIOS	American Megatrends International, LLC. P1412CEA.208
System Drive Model	
Resolution	1536 x 864 px
Power plan	Equilibrado

Processor

CPU	11th Gen Intel(R) Core(TM) i5-1135G7 @ 2.40GHz
Clock Frequency	2400 MHz
Max Frequency	5290 MHz
Processors	1
Cores	4 (8)
Package	Socket 1449 FCBGA

Graphic adapters

GPU	Intel(R) Iris(R) Xe Graphics
Manufacturer	Intel
Dedicated Video Memory	
Total Available Graphics Memory	8040 MB
Core Clock	1300 MHz
Boost Clock	1300 MHz
Memory Clock	1200 MHz
Driver Version	31.0.101.3959
Display 1	\\.\DISPLAY1 (1920 x 1080, 125% DPI scaling)

Storage devices

Drive 0	931 GB
Drive model	KINGSTON SNV2S1000G
Drive type	SSD
External drive	No (SCSI)
Partition 0	100 MB
Partition 1	C: (NTFS) 930 GB (885 GB free)
Partition 2	638 MB

Batteries

Battery	ASUS Battery
Manufacturer	ASUSTeK
Type	Unknown
Cycle count	0
Designed capacity	37130 mWh
Full charged capacity	37523 mWh
Wear level	-1,1%

Hardware monitoring



PCMark 10

5 011

Essentials

9 931

Apps Start-up score

15 136

Video Conferencing Score

7 592

Web Browsing Score

8 525

Productivity

6 788

Spreadsheets Score

5 732

Writing Score

8 040

Digital Content Creation

5 067

Photo Editing Score

8 210

Rendering and Visualization Score

3 354

Video Editing Score

4 726

Validation

VALID

Run information

Result name

ASUS P1412CE_SN_N5NXC03666819A_2023-05-26 13:40:55.0

Result details

SystemInfo Version

5.61.1173

UI Version

2.1.2600 64

Test Version

1.0

Date

May 26 2023

Duration

23 m 38 s

Id

8c0c8693-7d25-49b6-bb72-9a266fccb144

Test settings

Default settings used

Yes

Additional output

Video Conferencing

Video Encoder, Intel® Quick Sync Video H.264 Encoder MFT

Video Conferencing

OpenCL, Intel(R) Iris(R) Xe Graphics

Spreadsheets

OpenCL, CPU

Photo Editing

OpenCL, Intel(R) Iris(R) Xe Graphics

Video Editing

OpenCL, Intel(R) Iris(R) Xe Graphics

System details

General

Operating System	Windows 11 64-bit 10.0.22621
Motherboard	ASUSTeK COMPUTER INC. P1412CEA
Memory	8192 MB
BIOS	American Megatrends International, LLC. P1412CEA.208
System Drive Model	
Resolution	1536 x 864 px
Power plan	Equilibrado

Processor

CPU	11th Gen Intel(R) Core(TM) i5-1135G7 @ 2.40GHz
Clock Frequency	2400 MHz
Max Frequency	4505 MHz
Processors	1
Cores	4 (8)
Package	Socket 1449 FCBGA

Graphic adapters

GPU	Intel(R) Iris(R) Xe Graphics
Manufacturer	Intel
Dedicated Video Memory	
Total Available Graphics Memory	8040 MB
Core Clock	1300 MHz
Boost Clock	1300 MHz
Memory Clock	1200 MHz
Driver Version	30.0.101.1660
Display 1	\\.\DISPLAY1 (1920 x 1080, 125% DPI scaling)

Storage devices

Drive 0	931 GB
Drive model	NVMe KINGSTON SNV2S1000G
Drive type	SSD
External drive	No (SCSI)
Partition 0	100 MB
Partition 1	C: (NTFS) 930 GB (886 GB free)
Partition 2	638 MB

Batteries

Battery	ASUS Battery
Manufacturer	ASUSTeK
Type	Unknown
Cycle count	2
Designed capacity	37130 mWh
Full charged capacity	37523 mWh
Wear level	-1,1%

Hardware monitoring



PCMark 10

4 937

Essentials

9 853

Apps Start-up score

14 903

Video Conferencing Score

7 533

Web Browsing Score

8 521

Productivity

6 475

Spreadsheets Score

5 750

Writing Score

7 293

Digital Content Creation

5 122

Photo Editing Score

8 195

Rendering and Visualization Score

3 332

Video Editing Score

4 923

Validation

VALID

Run information

Result name

ASUS P1412CE_SN_N5NXC089210208_2023-05-26 09:10:59.0

Result details

SystemInfo Version

5.61.1173

UI Version

2.1.2600 64

Test Version

1.0

Date

May 26 2023

Duration

24 m 20 s

Id

b7e066e6-1ab2-4d86-b86d-10c34dec3b14

Test settings

Default settings used

Yes

Additional output

Video Conferencing

Video Encoder, Intel® Quick Sync Video H.264 Encoder MFT

Video Conferencing

OpenCL, Intel(R) Iris(R) Xe Graphics

Spreadsheets

OpenCL, CPU

Photo Editing

OpenCL, Intel(R) Iris(R) Xe Graphics

Video Editing

OpenCL, Intel(R) Iris(R) Xe Graphics

System details

General

Operating System	Windows 11 64-bit 10.0.22621
Motherboard	ASUSTeK COMPUTER INC. P1412CEA
Memory	8192 MB
BIOS	American Megatrends International, LLC. P1412CEA.208
System Drive Model	
Resolution	1536 x 864 px
Power plan	Equilibrado

Processor

CPU	11th Gen Intel(R) Core(TM) i5-1135G7 @ 2.40GHz
Clock Frequency	2400 MHz
Max Frequency	4441 MHz
Processors	1
Cores	4 (8)
Package	Socket 1449 FCBGA

Graphic adapters

GPU	Intel(R) Iris(R) Xe Graphics
Manufacturer	Intel
Dedicated Video Memory	
Total Available Graphics Memory	8040 MB
Core Clock	1300 MHz
Boost Clock	1300 MHz
Memory Clock	1200 MHz
Driver Version	30.0.101.1660
Display 1	\\.\DISPLAY1 (1920 x 1080, 125% DPI scaling)

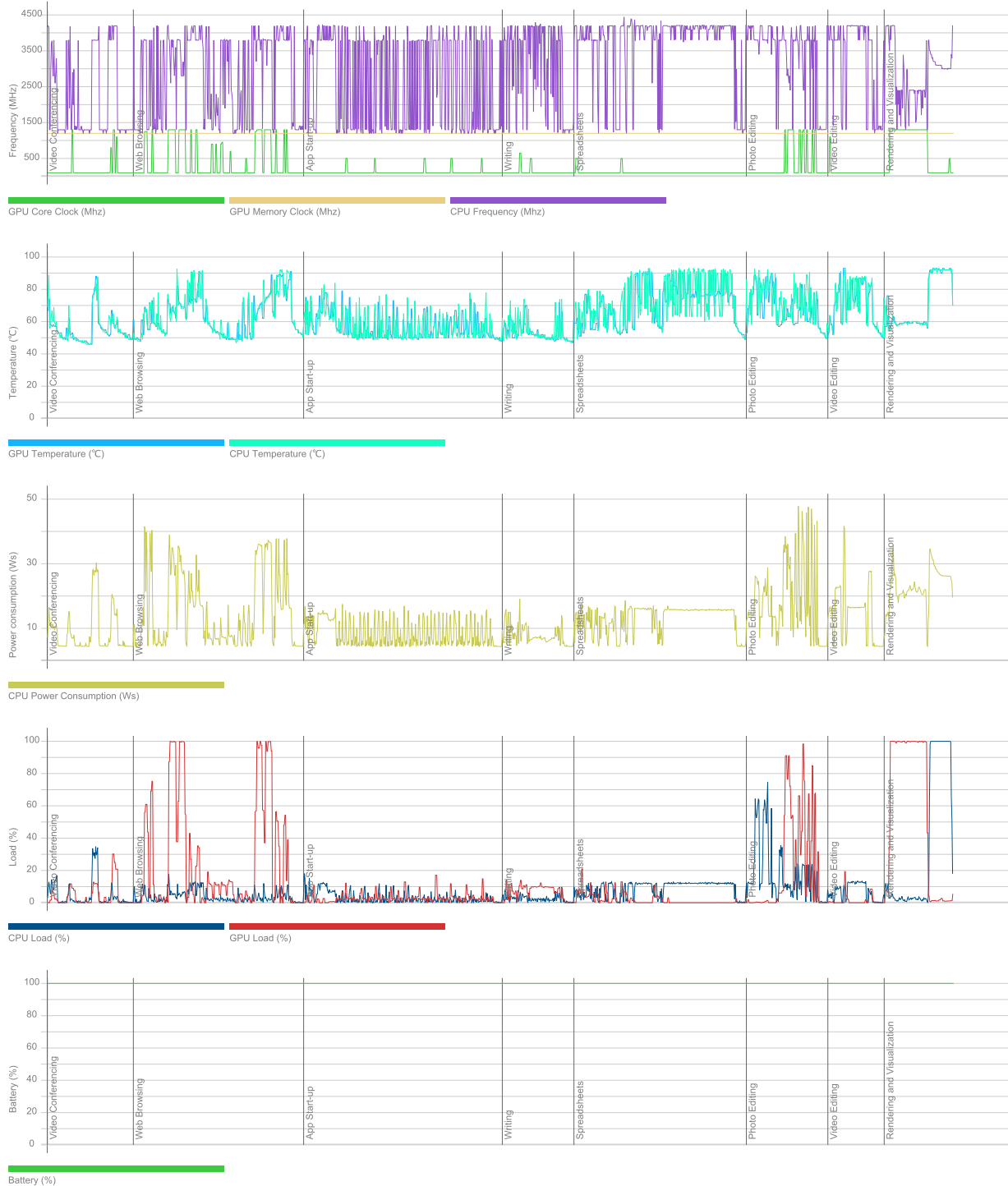
Storage devices

Drive 0	931 GB
Drive model	KINGSTON SNV2S1000G
Drive type	SSD
External drive	No (SCSI)
Partition 0	100 MB
Partition 1	C: (NTFS) 930 GB (882 GB free)
Partition 2	638 MB

Batteries

Battery	ASUS Battery
Manufacturer	ASUSTeK
Type	Unknown
Cycle count	3
Designed capacity	37130 mWh
Full charged capacity	35709 mWh
Wear level	3,8%

Hardware monitoring



3DMARK®

PCMARK 10

SCORE

4 892 with **Generic VGA(1x)** and **Intel Core i5-1135G7 Processor**

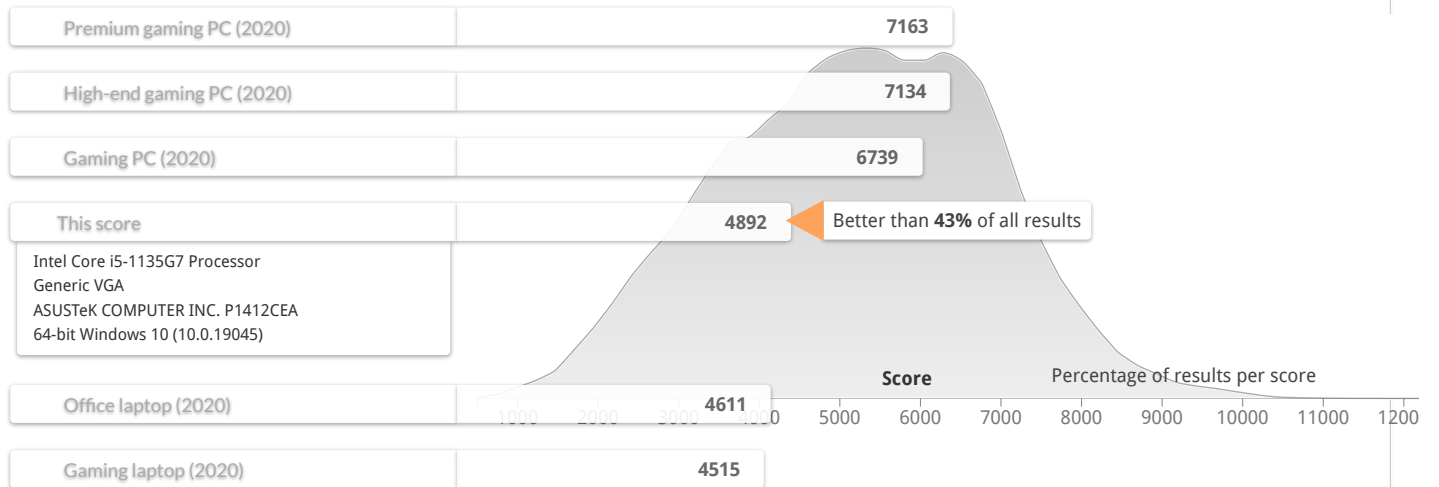
GRAPHICS CARD IS NOT RECOGNIZED

Web Score	8 259	Apps Score	16 012	Chat Score	7 580
Photo Score	7 920	Video Score	4 772	Writing Score	7 776
Rendering and Visualization Score	2 766	Spreadsheet Score	5 849	Essentials	10 008
		Productivity	6 744	Digital Content Creation	4 710

[Share this result](#) [Add to compare](#)

RUN DETAILS

OTHER RESULTS IN PCMARK 10 RUN



Intel Core i5-1135G7 Processor
 Generic VGA
 ASUSTeK COMPUTER INC. P1412CEA
 64-bit Windows 10 (10.0.19045)

Name DESKTOP-3JKC2M5_2023-03-31 01:43:58.0

Description

User Nex Computer S.A.S

OPENCL DEVICES

Video Conferencing Intel(R) Iris(R) Xe Graphics

Spreadsheets CPU

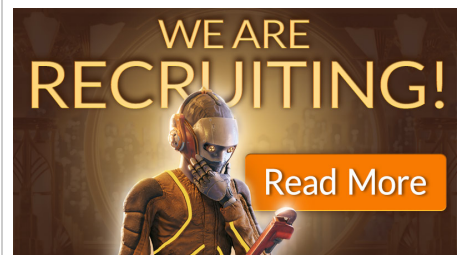
Photo Editing Intel(R) Iris(R) Xe Graphics

Video Editing Intel(R) Iris(R) Xe Graphics

GRAPHICS CARD

Graphics Card Generic VGA

Vendor Asustek Computer, Inc.



COMPARE

1

Add results

Clear

Compare

Average memory clock frequency	N/A
Average temperature	N/A
Driver version	31.0.101.3959
Driver status	Approved

PROCESSOR

Processor	Intel Core i5-1135G7 Processor
Clock frequency	4.416 MHz (2.400 MHz)
Average clock frequency	N/A
Average temperature	N/A
Physical / logical processors	1 / 8
# of cores	4
Package	FCBGA1449
Manufacturing process	10 nm
TDP	28 W

GENERAL

Operating system	64-bit Windows 10 (10.0.19045)
Motherboard	ASUSTeK COMPUTER INC. P1412CEA
Memory	16.080 MB
Module 1	8.192 MB Samsung DDR4 @ 3.194 MHz
Hard drive model	1.000 GB NVMe WD Green SN350 1TB
VBS status	Disabled
HVCI status	Disabled

PCMark 10

4 963

Essentials

9 767

Apps Start-up score

14 187

Video Conferencing Score

7 896

Web Browsing Score

8 318

Productivity

6 742

Spreadsheets Score

5 754

Writing Score

7 900

Digital Content Creation

5 037

Photo Editing Score

8 327

Rendering and Visualization Score

3 229

Video Editing Score

4 755

Validation

VALID

Run information

Result name

ASUS_P1412CE_SN_N5NXC089232207-1MS5SS0_2023-05-31 09:33:42.0

Result details

SystemInfo Version

5.63.1186

UI Version

2.1.2600 64

Test Version

1.0

Date

May 31 2023

Duration

23 m 59 s

Id

e426bb83-177d-40fa-8176-d7b355810237

Test settings

Default settings used

Yes

Additional output

Video Conferencing

Video Encoder, Intel® Quick Sync Video H.264 Encoder MFT

Video Conferencing

OpenCL, Intel(R) Iris(R) Xe Graphics

Spreadsheets

OpenCL, CPU

Photo Editing

OpenCL, Intel(R) Iris(R) Xe Graphics

Video Editing

OpenCL, Intel(R) Iris(R) Xe Graphics

System details

General

Operating System	Windows 11 64-bit 10.0.22621
Motherboard	ASUSTeK COMPUTER INC. P1412CEA
Memory	16080 MB DDR4
BIOS	American Megatrends International, LLC. P1412CEA.208
System Drive Model	
Resolution	1280 x 720 px
Power plan	Equilibrado

Processor

CPU	11th Gen Intel(R) Core(TM) i5-1135G7 @ 2.40GHz
Clock Frequency	2400 MHz
Max Frequency	4552 MHz
Processors	1
Cores	4 (8)
Package	Socket 1449 FCBGA

Graphic adapters

GPU	Intel(R) Iris(R) Xe Graphics
Manufacturer	Intel
Dedicated Video Memory	
Total Available Graphics Memory	8040 MB
Core Clock	1300 MHz
Boost Clock	1300 MHz
Memory Clock	1200 MHz
Driver Version	30.0.101.1660
Display 1	\\.\DISPLAY1 (1920 x 1080, 150% DPI scaling)

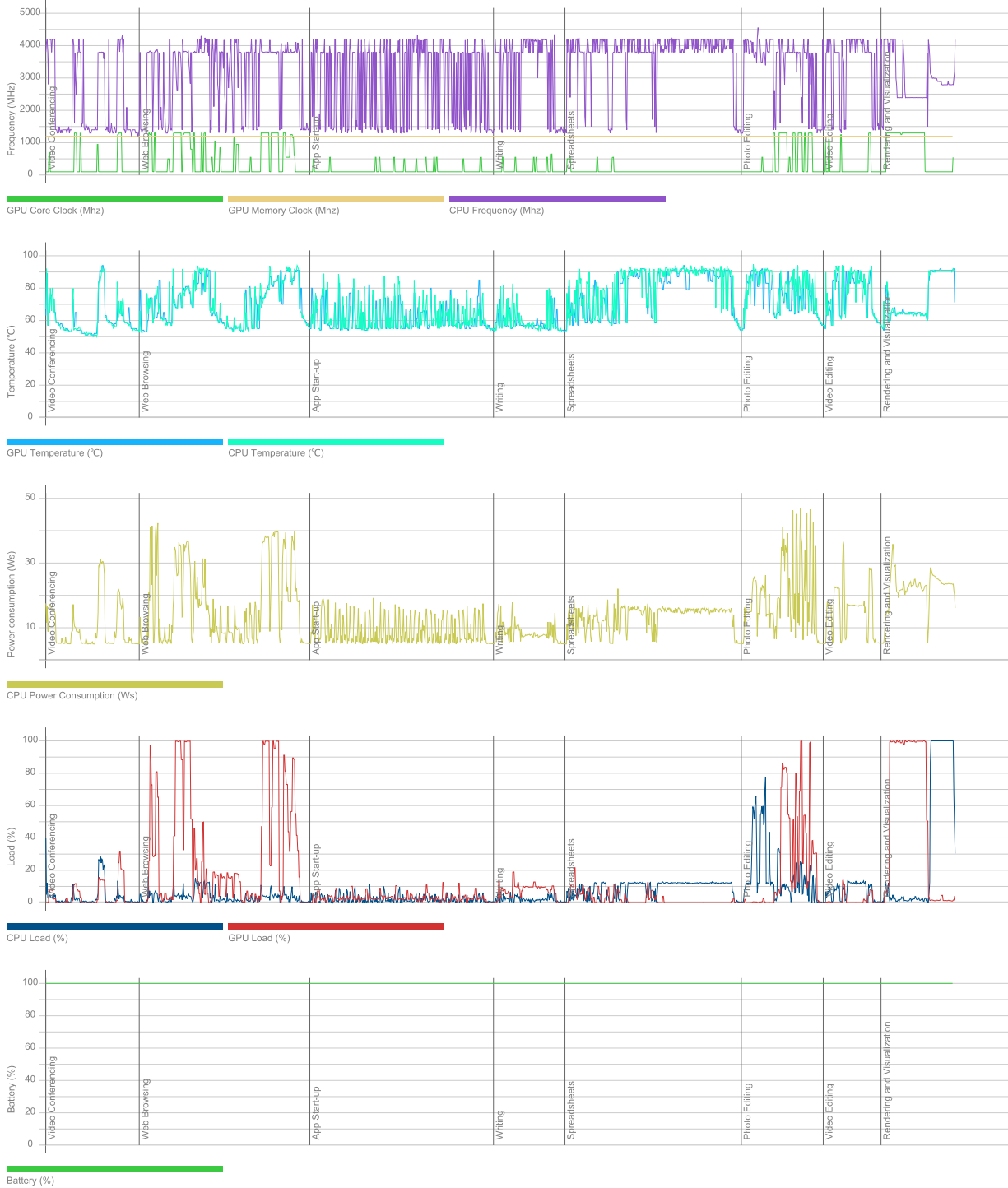
Storage devices

Drive 0	931 GB
Drive model	KINGSTON SNV2S1000G
Drive type	SSD
External drive	No (SCSI)
Partition 0	100 MB
Partition 1	C: (NTFS) 930 GB (875 GB free)
Partition 2	687 MB

Batteries

Battery	ASUS Battery
Manufacturer	ASUSTeK
Type	Unknown
Cycle count	0
Designed capacity	37130 mWh
Full charged capacity	37523 mWh
Wear level	-1,1%

Hardware monitoring



PCMark 10

4 967

Essentials

10 059

Apps Start-up score

15 480

Video Conferencing Score

7 840

Web Browsing Score

8 388

Productivity

6 648

Spreadsheets Score

5 738

Writing Score

7 704

Digital Content Creation

4 973

Photo Editing Score

7 974

Rendering and Visualization Score

3 215

Video Editing Score

4 799

Validation

VALID

Run information

Result name

ASUS_P1412CE_SN-N5NXC03665019F-BOKTKV3_2023-05-31 10:10:56.0

Result details

SystemInfo Version

5.63.1186

UI Version

2.1.2600 64

Test Version

1.0

Date

May 31 2023

Duration

23 m 46 s

Id

0b3dbe68-02f0-4970-9896-26c733876e46

Test settings

Default settings used

Yes

Additional output

Video Conferencing

Video Encoder, Intel® Quick Sync Video H.264 Encoder MFT

Video Conferencing

OpenCL, Intel(R) Iris(R) Xe Graphics

Spreadsheets

OpenCL, CPU

Photo Editing

OpenCL, Intel(R) Iris(R) Xe Graphics

Video Editing

OpenCL, Intel(R) Iris(R) Xe Graphics

System details

General

Operating System	Windows 11 64-bit 10.0.22621
Motherboard	ASUSTeK COMPUTER INC. P1412CEA
Memory	8192 MB
BIOS	American Megatrends International, LLC. P1412CEA.208
System Drive Model	
Resolution	1536 x 864 px
Power plan	Equilibrado

Processor

CPU	11th Gen Intel(R) Core(TM) i5-1135G7 @ 2.40GHz
Clock Frequency	2400 MHz
Max Frequency	4399 MHz
Processors	1
Cores	4 (8)
Package	Socket 1449 FCBGA

Graphic adapters

GPU	Intel(R) Iris(R) Xe Graphics
Manufacturer	Intel
Dedicated Video Memory	
Total Available Graphics Memory	8040 MB
Core Clock	1300 MHz
Boost Clock	1300 MHz
Memory Clock	1200 MHz
Driver Version	31.0.101.3959
Display 1	\\.\DISPLAY1 (1920 x 1080, 125% DPI scaling)

Storage devices

Drive 0	931 GB
Drive model	KINGSTON SNV2S1000G
Drive type	SSD
External drive	No (SCSI)
Partition 0	100 MB
Partition 1	C: (NTFS) 930 GB (879 GB free)
Partition 2	687 MB

Batteries

Battery	ASUS Battery
Manufacturer	ASUSTeK
Type	Unknown
Cycle count	1
Designed capacity	37130 mWh
Full charged capacity	37523 mWh
Wear level	-1,1%

Hardware monitoring



PCMark 10

4 875

Essentials	9 685
Apps Start-up score	14 218
Video Conferencing Score	7 873
Web Browsing Score	8 118
Productivity	6 507
Spreadsheets Score	5 711
Writing Score	7 415
Digital Content Creation	4 990
Photo Editing Score	8 053
Rendering and Visualization Score	3 311
Video Editing Score	4 661

Validation VALID

Run information

Result name ASUSP1412CE_SN_N5NXC03667019F_2023-05-29 12:21:28.0

Result details

SystemInfo Version 5.63.1186
UI Version 2.1.2600 64
Test Version 1.0
Date May 29 2023
Duration 23 m 59 s
Id bdad0ff7-6865-4c88-8b85-03cd98476458

Test settings

Default settings used Yes

Additional output

Video Conferencing Video Encoder, Intel® Quick Sync Video H.264 Encoder MFT
Video Conferencing OpenCL, Intel(R) Iris(R) Xe Graphics
Spreadsheets OpenCL, CPU
Photo Editing OpenCL, Intel(R) Iris(R) Xe Graphics
Video Editing OpenCL, Intel(R) Iris(R) Xe Graphics

System details

General

Operating System	Windows 11 64-bit 10.0.22621
Motherboard	ASUSTeK COMPUTER INC. P1412CEA
Memory	8192 MB
BIOS	American Megatrends International, LLC. P1412CEA.208
System Drive Model	
Resolution	1280 x 720 px
Power plan	Equilibrado

Processor

CPU	11th Gen Intel(R) Core(TM) i5-1135G7 @ 2.40GHz
Clock Frequency	2400 MHz
Max Frequency	6873 MHz
Processors	1
Cores	4 (8)
Package	Socket 1449 FCBGA

Graphic adapters

GPU	Intel(R) Iris(R) Xe Graphics
Manufacturer	Intel
Dedicated Video Memory	
Total Available Graphics Memory	8040 MB
Core Clock	1300 MHz
Boost Clock	1300 MHz
Memory Clock	1200 MHz
Driver Version	31.0.101.3959
Display 1	\\.\DISPLAY1 (1920 x 1080, 150% DPI scaling)

Storage devices

Drive 0	931 GB
Drive model	NVMe KINGSTON SNV2S1000G
Drive type	SSD
External drive	No (SCSI)
Partition 0	100 MB
Partition 1	C: (NTFS) 930 GB (890 GB free)
Partition 2	638 MB

Batteries

Battery	ASUS Battery
Manufacturer	ASUSTeK
Type	Unknown
Cycle count	0
Designed capacity	37130 mWh
Full charged capacity	37028 mWh
Wear level	0,3%

Hardware monitoring



PCMark 10

4 866

Essentials

9 527

Apps Start-up score

13 518

Video Conferencing Score

7 589

Web Browsing Score

8 431

Productivity

6 532

Spreadsheets Score

5 684

Writing Score

7 508

Digital Content Creation

5 028

Photo Editing Score

8 284

Rendering and Visualization Score

3 141

Video Editing Score

4 888

Validation

VALID

Run information

Result name

ASUSP1412CE_SN_N5NXCV03672919E_2023-05-29 08:56:23.0

Result details

SystemInfo Version

5.63.1186

UI Version

2.1.2600 64

Test Version

1.0

Date

May 29 2023

Duration

24 m 0 s

Id

b637f780-6e30-4746-82ca-dee2a861319b

Test settings

Default settings used

Yes

Additional output

Video Conferencing

Video Encoder, Intel® Quick Sync Video H.264 Encoder MFT

Video Conferencing

OpenCL, Intel(R) Iris(R) Xe Graphics

Spreadsheets

OpenCL, CPU

Photo Editing

OpenCL, Intel(R) Iris(R) Xe Graphics

Video Editing

OpenCL, Intel(R) Iris(R) Xe Graphics

System details

General

Operating System	Windows 11 64-bit 10.0.22621
Motherboard	ASUSTeK COMPUTER INC. P1412CEA
Memory	8192 MB
BIOS	American Megatrends International, LLC. P1412CEA.208
System Drive Model	
Resolution	1536 x 864 px
Power plan	Equilibrado

Processor

CPU	11th Gen Intel(R) Core(TM) i5-1135G7 @ 2.40GHz
Clock Frequency	2400 MHz
Max Frequency	4375 MHz
Processors	1
Cores	4 (8)
Package	Socket 1449 FCBGA

Graphic adapters

GPU	Intel(R) Iris(R) Xe Graphics
Manufacturer	Intel
Dedicated Video Memory	
Total Available Graphics Memory	8040 MB
Core Clock	1300 MHz
Boost Clock	1300 MHz
Memory Clock	1200 MHz
Driver Version	30.0.101.1660
Display 1	\\.\DISPLAY1 (1920 x 1080, 125% DPI scaling)

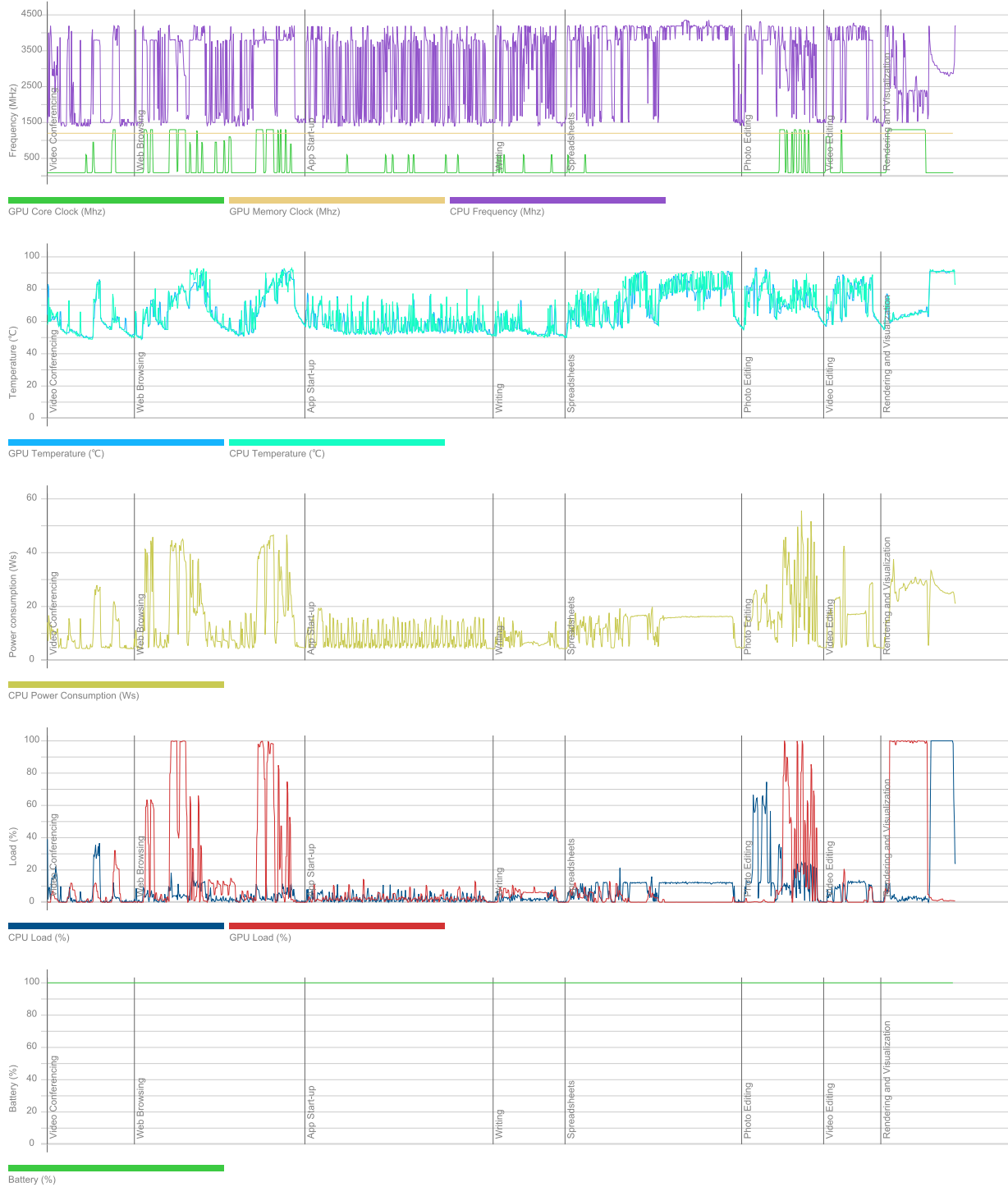
Storage devices

Drive 0	931 GB
Drive model	KINGSTON SNV2S1000G
Drive type	SSD
External drive	No (SCSI)
Partition 0	100 MB
Partition 1	C: (NTFS) 930 GB (887 GB free)
Partition 2	638 MB

Batteries

Battery	ASUS Battery
Manufacturer	ASUSTeK
Type	Unknown
Cycle count	1
Designed capacity	37130 mWh
Full charged capacity	37523 mWh
Wear level	-1,1%

Hardware monitoring



3DMARK®

PCMARK 10

SCORE

4 922 with **Intel Iris Xe Graphics G7 96EU(1x)** and **Intel Core i5-1135G7**

VALID RESULT

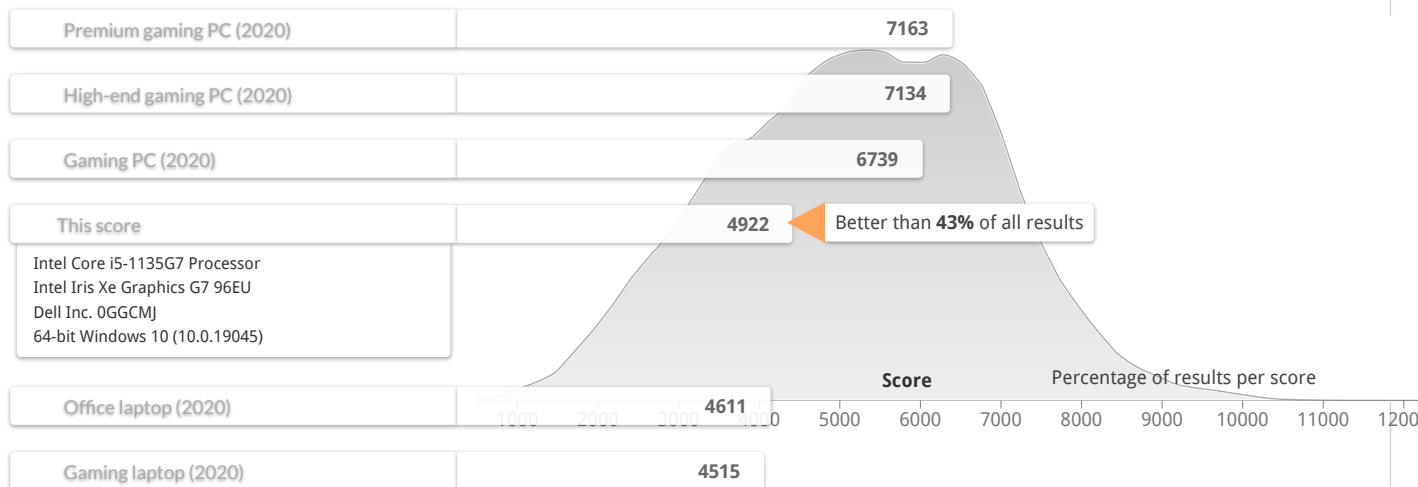
Web Score	8 562	Apps Score	14 173	Chat Score	7 550
Photo Score	7 800	Video Score	4 706	Writing Score	7 859
Rendering and Visualization Score	3 253	Spreadsheet Score	5 826	Essentials	9 712
		Productivity	6 766	Digital Content Creation	4 924

[Share this result](#)

[Add to compare](#)

RUN DETAILS

OTHER RESULTS IN PCMARK 10 RUN



Intel Core i5-1135G7 Processor
 Intel Iris Xe Graphics G7 96EU
 Dell Inc. 0GGCMJ
 64-bit Windows 10 (10.0.19045)

Name DESKTOP-V6G3578_2023-03-30 15:30:37.0

Description

User Nex Computer S.A.S

OPENCL DEVICES

Video Conferencing Intel(R) Iris(R) Xe Graphics

Spreadsheets CPU

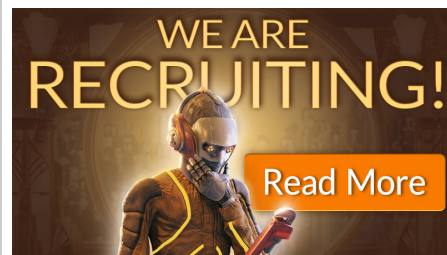
Photo Editing Intel(R) Iris(R) Xe Graphics

Video Editing Intel(R) Iris(R) Xe Graphics

GRAPHICS CARD

Graphics Card **Intel Iris Xe Graphics G7 96EU**

Vendor Dell Computer Corporation



COMPARE

1

Add results

Clear

Compare

Average memory clock frequency	N/A
Average temperature	N/A
Driver version	31.0.101.4091
Driver status	Approved

PROCESSOR

Processor	Intel Core i5-1135G7 Processor
Clock frequency	4.253 MHz (2.400 MHz)
Average clock frequency	N/A
Average temperature	N/A
Physical / logical processors	1 / 8
# of cores	4
Package	FCBGA1449
Manufacturing process	10 nm
TDP	28 W

GENERAL

Operating system	64-bit Windows 10 (10.0.19045)
Motherboard	Dell Inc. 0GGCMJ
Memory	16.384 MB
Module 1	8.192 MB Samsung DDR4 @ 2.652 MHz
Module 2	8.192 MB Micron Technology DDR4 @ 2.652 MHz
Hard drive model	1.000 GB WD Green SN350 1TB
VBS status	Disabled
HVCI status	Disabled

PCMark 10

4 879

Essentials

9 758

Apps Start-up score

13 719

Video Conferencing Score

7 891

Web Browsing Score

8 583

Productivity

6 560

Spreadsheets Score

5 807

Writing Score

7 411

Digital Content Creation

4 927

Photo Editing Score

8 104

Rendering and Visualization Score

3 144

Video Editing Score

4 695

Validation

VALID

Run information

Result name

DELL_VOSTRO14_SN_H12N4N3_2023-05-30 09:54:12.0

Result details

SystemInfo Version

5.63.1186

UI Version

2.1.2600 64

Test Version

1.0

Date

May 30 2023

Duration

24 m 31 s

Id

a63a0a8f-5c0c-442a-83b0-657d27d40917

Test settings

Default settings used

Yes

Additional output

Video Conferencing

Video Encoder, Intel® Quick Sync Video H.264 Encoder MFT

Video Conferencing

OpenCL, Intel(R) Iris(R) Xe Graphics

Spreadsheets

OpenCL, CPU

Photo Editing

OpenCL, Intel(R) Iris(R) Xe Graphics

Video Editing

OpenCL, Intel(R) Iris(R) Xe Graphics

System details

General

Operating System	Windows 10 Pro 64-bit 10.0.19045
Motherboard	Dell Inc. 0GGCMJ
Memory	16384 MB
BIOS	Dell Inc. 1.23.0
System Drive Model	
Resolution	1366 x 768 px
Power plan	Equilibrado

Processor

CPU	11th Gen Intel(R) Core(TM) i5-1135G7 @ 2.40GHz
Clock Frequency	2400 MHz
Max Frequency	15629 MHz
Processors	1
Cores	4 (8)
Package	Socket 1449 FCBGA

Graphic adapters

GPU	Intel(R) Iris(R) Xe Graphics
Manufacturer	Intel
Dedicated Video Memory	
Total Available Graphics Memory	8192 MB
Core Clock	1300 MHz
Boost Clock	1300 MHz
Memory Clock	1000 MHz
Driver Version	31.0.101.4091
Display 1	\\.\DISPLAY1 (1366 x 768, 100% DPI scaling)

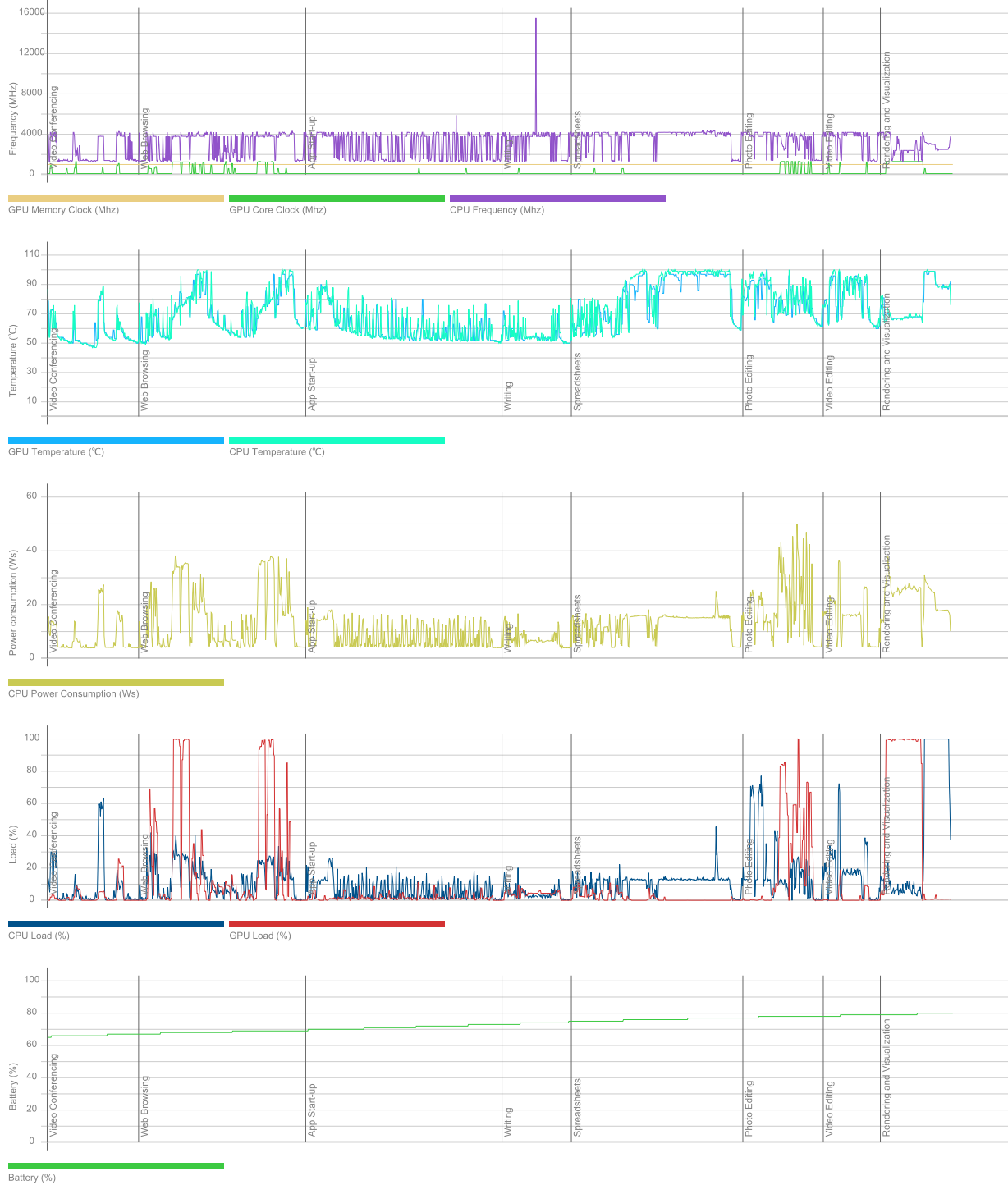
Storage devices

Drive 0	931 GB
Drive model	KINGSTON SNV2S1000G
Drive type	SSD
External drive	No (SCSI)
Partition 0	100 MB
Partition 1	C: (NTFS) 930 GB (890 GB free)
Partition 2	535 MB
Drive 1	14,9 GB
Drive model	SanDisk Cruzer Force USB Device
Drive type	
External drive	Yes (USB)
Partition 0	D: (FAT32) 14,9 GB (5,0 GB free)

Batteries

Battery	DELL 1VX1H15
Manufacturer	BYD
Type	Unknown
Cycle count	0
Designed capacity	42009 mWh
Full charged capacity	42009 mWh
Wear level	0,0%

Hardware monitoring



PCMark 10

4 855

Essentials

9 496

Apps Start-up score

12 688

Video Conferencing Score

7 867

Web Browsing Score

8 579

Productivity

6 513

Spreadsheets Score

5 761

Writing Score

7 365

Digital Content Creation

5 022

Photo Editing Score

8 185

Rendering and Visualization Score

3 258

Video Editing Score

4 751

Validation

VALID

Run information

Result name

DELL_VOSTRO14_SN:1W1N4N3_2023-05-29 17:34:49.0

Result details

SystemInfo Version

5.63.1186

UI Version

2.1.2600 64

Test Version

1.0

Date

May 29 2023

Duration

24 m 24 s

Id

dc3e8341-7081-4c0b-ae43-6e8a2d76ae00

Test settings

Default settings used

Yes

Additional output

Video Conferencing

Video Encoder, Intel® Quick Sync Video H.264 Encoder MFT

Video Conferencing

OpenCL, Intel(R) Iris(R) Xe Graphics

Spreadsheets

OpenCL, CPU

Photo Editing

OpenCL, Intel(R) Iris(R) Xe Graphics

Video Editing

OpenCL, Intel(R) Iris(R) Xe Graphics

System details

General

Operating System	Windows 10 Pro 64-bit 10.0.19045
Motherboard	Dell Inc. 0GGCMJ
Memory	16384 MB
BIOS	Dell Inc. 1.23.0
System Drive Model	
Resolution	1366 x 768 px
Power plan	Equilibrado

Processor

CPU	11th Gen Intel(R) Core(TM) i5-1135G7 @ 2.40GHz
Clock Frequency	2400 MHz
Max Frequency	4561 MHz
Processors	1
Cores	4 (8)
Package	Socket 1449 FCBGA

Graphic adapters

GPU	Intel(R) Iris(R) Xe Graphics
Manufacturer	Intel
Dedicated Video Memory	
Total Available Graphics Memory	8192 MB
Core Clock	1300 MHz
Boost Clock	1300 MHz
Memory Clock	1000 MHz
Driver Version	31.0.101.4091
Display 1	\\.\DISPLAY1 (1366 x 768, 100% DPI scaling)

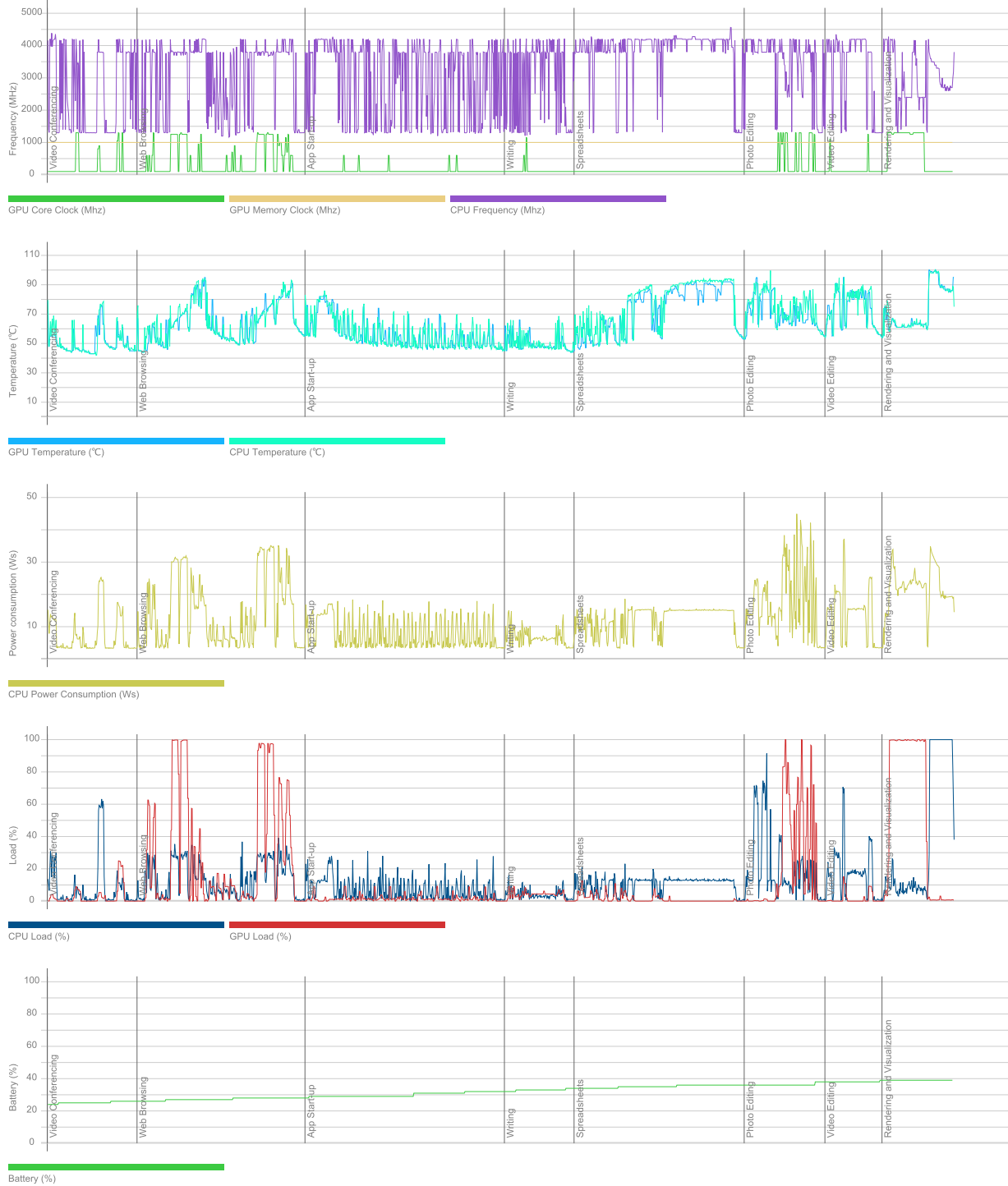
Storage devices

Drive 0	931 GB
Drive model	KINGSTON SNV2S1000G
Drive type	SSD
External drive	No (SCSI)
Partition 0	100 MB
Partition 1	C: (NTFS) 930 GB (888 GB free)
Partition 2	535 MB

Batteries

Battery	DELL 1VX1H15
Manufacturer	BYD
Type	Unknown
Cycle count	0
Designed capacity	42009 mWh
Full charged capacity	42009 mWh
Wear level	0,0%

Hardware monitoring



PCMark 10

4 889

Essentials

9 741

Apps Start-up score

13 646

Video Conferencing Score

7 896

Web Browsing Score

8 579

Productivity

6 547

Spreadsheets Score

5 816

Writing Score

7 370

Digital Content Creation

4 974

Photo Editing Score

8 161

Rendering and Visualization Score

3 225

Video Editing Score

4 676

Validation

VALID

Run information

Result name

DELL_VOSTRO14_SN:7RPM4N3_2023-05-29 17:22:17.0

Result details

SystemInfo Version

5.61.1173

UI Version

2.1.2600 64

Test Version

1.0

Date

May 29 2023

Duration

24 m 25 s

Id

851dd00d-fe47-4e3c-8b65-e1f1fafece14

Test settings

Default settings used

Yes

Additional output

Video Conferencing

Video Encoder, Intel® Quick Sync Video H.264 Encoder MFT

Video Conferencing

OpenCL, Intel(R) Iris(R) Xe Graphics

Spreadsheets

OpenCL, CPU

Photo Editing

OpenCL, Intel(R) Iris(R) Xe Graphics

Video Editing

OpenCL, Intel(R) Iris(R) Xe Graphics

System details

General

Operating System	Windows 10 Pro 64-bit 10.0.19045
Motherboard	Dell Inc. 0GGCMJ
Memory	16384 MB
BIOS	Dell Inc. 1.23.0
System Drive Model	
Resolution	1366 x 768 px
Power plan	Equilibrado

Processor

CPU	11th Gen Intel(R) Core(TM) i5-1135G7 @ 2.40GHz
Clock Frequency	2400 MHz
Max Frequency	4553 MHz
Processors	1
Cores	4 (8)
Package	Socket 1449 FCBGA

Graphic adapters

GPU	Intel(R) Iris(R) Xe Graphics
Manufacturer	Intel
Dedicated Video Memory	
Total Available Graphics Memory	8192 MB
Core Clock	1300 MHz
Boost Clock	1300 MHz
Memory Clock	1000 MHz
Driver Version	31.0.101.4091
Display 1	\\.\DISPLAY1 (1366 x 768, 100% DPI scaling)

Storage devices

Drive 0	931 GB
Drive model	KINGSTON SNV2S1000G
Drive type	SSD
External drive	No (SCSI)
Partition 0	100 MB
Partition 1	C: (NTFS) 930 GB (887 GB free)
Partition 2	535 MB
Drive 1	14,9 GB
Drive model	SanDisk Cruzer Force USB Device
Drive type	
External drive	Yes (USB)
Partition 0	D: (FAT32) 14,9 GB (5,0 GB free)

Batteries

Battery	DELL 1VX1H15
Manufacturer	BYD
Type	Unknown
Cycle count	0
Designed capacity	42009 mWh
Full charged capacity	42009 mWh
Wear level	0,0%

Hardware monitoring

