

Manizales, 12 de noviembre de 2022

Señores
MUNICIPIO DE ITAGUI
La ciudad

Asunto: Informe Entrega Equipos de Escritorio según Orden de Compra 91914 del Proceso CCE

Estimados señores

A continuación, relacionamos la información y documentación solicitada para el informe de entrega de los equipos HP ProDesk 405 G8

Referencia de los equipos entregados (HP ProDesk 405 G8) se anexa el detalle de las características, en la cual en el ítem de Procesador, se especifica que el equipo cumple con PCMARCK10: 5400 ptos

- a. Listado de los 10 equipos con su respectivo Serial y documentos de garantía según anexo técnico del Acuerdo marco de la tienda virtual (Garantía de Fabrica Tres (3) años)
- b. Se anexa el comprobante de entrega de la transportadora por la cual se enviaron los equipos.
- c. **Pre-factura** de la orden de compra por valor de \$35.078.582 COP



ALBERTO ALVAREZ LOPEZ
Gerente General

a. REFERENCIA Y CARACTERÍSTICA DE EQUIPOS HP ProDesk 405 G8 ENTREGADOS



HP ProDesk 405 G8 SFF

ETP-CCD-1

Los trabajadores esenciales requieren un ordenador escalable y muy seguro con rendimiento comercial. HP ProDesk 405 cumple de manera asequible todos estos requisitos en un diseño compacto para tu negocio en crecimiento



Procesador	AMD Ryzen™ 3-5300G 4 núcleos, 8 hilos. Lanzamiento - 4/13/2021 PCMARK10: 5400ptos
Sistema Operativo	Windows 10 profesional 64 bits (disponible a través de derechos de degradación de Windows 11), en Español
Monitor	Monitor 21.5" LED IPS FULL HD antirreflejos con ajuste de inclinación y altura ajustable
Tarjeta de video	Integrada, AMD
Memoria RAM	16 GB
Almacenamiento	Unidad de estado solido SSD 512GB M.2 2280 PCIe NVMe
Teclado	Teclado en español con cable, conexión USB y teclado numérico a prueba de salpicaduras o derrame de líquidos.
Mouse	Mouse con cable para conexión USB, sensor óptico, botones y scroll
Multimedia	Conector para auricular de 3,5 mm auriculares/microfono en combo, conector auricular de 3,5 mm independientes, con altavoz interno mono
Puerto de red	Puerto Ethernet (RJ-45) 10/100/1000 integrada con compatibilidad nativa de IPv6 en coexistencia con IPv4
Alimentación Fuente de Poder	Fuente de poder externa de 180W con capacidad de soporte estable con 90% de rendimiento Certificación 80 PLUS GOLD

Puertos USB	7 USB A Libres tras conectar teclado y mouse
Puertos de video	1 Puerto de video DisplayPort de salida libre
Certificaciones	ENERGY STAR® 8.0, EPEAT Gold, FCC, UL, CE, RoHS, ISO 14001-9001
Seguridad	Ranura para guaya de seguridad
Garantía	Años de garantía: 3 de forma 3/3/3 (Partes/Mano de obra/ En sitio)



a. **SERIALES DE EQUIPOS Y CONFIRMACÓN DE GARANTÍA 3 AÑOS**

DESCRIPCION EQUIPO	SERIAL
HP ProDesk 405 G8	1CZ23300JK
HP ProDesk 405 G8	1CZ23300JM
HP ProDesk 405 G8	1CZ23300JN
HP ProDesk 405 G8	1CZ23300JQ
HP ProDesk 405 G8	1CZ23300JR
HP ProDesk 405 G8	1CZ23300JS
HP ProDesk 405 G8	1CZ23300JT
HP ProDesk 405 G8	1CZ23300JP
HP ProDesk 405 G8	1CZ23300JV
HP ProDesk 405 G8	1CZ23300JW



Gestión de Tecnología Informática

HP ProDesk 405 G8 Small Form Factor PC (2J2P2AV)



Warranty status details for your product: **Active**

[Check another product](#)

Serial Number 1CZ23300JM
Product Number 746C4LA



Life Happens!
Protect your device and live fearlessly with an HP
Care Pack.
[Extend Coverage >](#)

× **HP manufacturer/base warranty**

Warranty type Manufacturer Warranty
Service type Wty: HP HW Maintenance Onsite Support
Status ? Active: Covered under Manufacturer warranty, 11 months remaining.
Start Date November 03, 2022
End Date November 02, 2023
Service Level Standard Material Handling
Global Coverage
NextAvail TechResource Remote
NextAvail TechResource Onsite
Std Office Hrs Std Office Days
No Usage Limitation
Next Cov Day Onsite Response
Standard Parts Logistics
Deliverables Onsite Support
Parts and Material provided
Hardware Problem Diagnosis

Service type Wty: HP Support for Initial Setup
Status ? Active: Covered under Manufacturer warranty, 2 months remaining.
Start Date November 03, 2022
End Date January 31, 2023
Service Level Std Office Hrs Std Office Days
NextAvail TechResource Remote
2 Hr Remote Response
Unlimited Named Callers
Deliverables Initial Setup Assistance

HP has checked your product information, including the product and serial numbers, to determine your warranty results.



HP ProDesk 405 G8 Small Form Factor PC (2J2P2AV)



Warranty status details for your product: Active

[Check another product](#)

Serial Number 1CZ23300JK
Product Number 746C4LA



Life Happens!
Protect your device and live fearlessly with an HP Care Pack.
[Extend Coverage >](#)

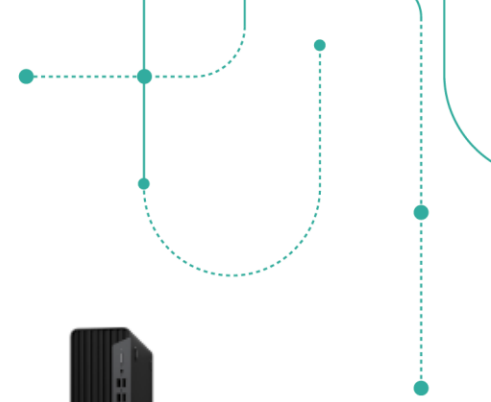
× HP manufacturer/base warranty

Warranty type Manufacturer Warranty
Service type Wty: HP HW Maintenance Onsite Support
Status ? Active: Covered under Manufacturer warranty, 11 months remaining.
Start Date November 03, 2022
End Date November 02, 2023
Service Level Standard Material Handling
Global Coverage
NextAvail TechResource Remote
NextAvail TechResource Onsite
Std Office Hrs Std Office Days
No Usage Limitation
Next Cov Day Onsite Response
Standard Parts Logistics
Deliverables Onsite Support
Parts and Material provided
Hardware Problem Diagnosis

Service type Wty: HP Support for Initial Setup
Status ? Active: Covered under Manufacturer warranty, 2 months remaining.
Start Date November 03, 2022
End Date January 31, 2023
Service Level Std Office Hrs Std Office Days
NextAvail TechResource Remote
2 Hr Remote Response
Unlimited Named Callers
Deliverables Initial Setup Assistance

HP has checked your product information, including the product and serial numbers, to determine your warranty results.






HP ProDesk 405 G8 Small Form Factor PC (2J2P2AV)



Warranty status details for your product: Active

[Check another product](#)

Serial Number 1CZ23300JN
Product Number 746C4LA



Life Happens!
Protect your device and live fearlessly with an HP Care Pack.
[Extend Coverage >](#)

HP manufacturer/base warranty

Warranty type Manufacturer Warranty
Service type Wty: HP HW Maintenance Onsite Support
Status ? Active: Covered under Manufacturer warranty, 11 months remaining.
Start Date November 03, 2022
End Date November 02, 2023
Service Level Standard Material Handling
Global Coverage
NextAvail TechResource Remote
NextAvail TechResource Onsite
Std Office Hrs Std Office Days
No Usage Limitation
Next Cov Day Onsite Response
Standard Parts Logistics
Deliverables Onsite Support
Parts and Material provided
Hardware Problem Diagnosis

Service type Wty: HP Support for Initial Setup
Status ? Active: Covered under Manufacturer warranty, 2 months remaining.
Start Date November 03, 2022
End Date January 31, 2023
Service Level Std Office Hrs Std Office Days
NextAvail TechResource Remote
2 Hr Remote Response
Unlimited Named Callers
Deliverables Initial Setup Assistance

HP has checked your product information, including the product and serial numbers, to determine your warranty results.




HP ProDesk 405 G8 Small Form Factor PC (2J2P2AV)

Warranty status details for your product: Active

[Check another product](#)

Serial Number 1C223300JQ
Product Number 746C4LA



Life Happens!
Protect your device and live fearlessly with an HP Care Pack.
[Extend Coverage >](#)

HP manufacturer/base warranty

Warranty type Manufacturer Warranty
Service type Wty: HP HW Maintenance Onsite Support
Status Active: Covered under Manufacturer warranty, 11 months remaining.
Start Date November 03, 2022
End Date November 02, 2023
Service Level Standard Material Handling
Global Coverage
NextAvail TechResource Remote
NextAvail TechResource Onsite
Std Office Hrs Std Office Days
No Usage Limitation
Next Cov Day Onsite Response
Standard Parts Logistics
Deliverables Onsite Support
Parts and Material provided
Hardware Problem Diagnosis

Service type Wty: HP Support for Initial Setup
Status Active: Covered under Manufacturer warranty, 2 months remaining.
Start Date November 03, 2022
End Date January 31, 2023
Service Level Std Office Hrs Std Office Days
NextAvail TechResource Remote
2 Hr Remote Response
Unlimited Named Callers
Deliverables Initial Setup Assistance

HP has checked your product information, including the product and serial numbers, to determine your warranty results.

HP ProDesk 405 G8 Small Form Factor PC (2J2P2AV)



Warranty status details for your product: Active

[Check another product](#)

Serial Number 1C2Z3300JR
Product Number 746C4LA



Life Happens!

Protect your device and live fearlessly with an HP Care Pack.
[Extend Coverage >](#)

HP manufacturer/base warranty

Warranty type Manufacturer Warranty
Service type Wty: HP HW Maintenance Onsite Support
Status ? **Active: Covered under Manufacturer warranty, 11 months remaining.**
Start Date November 03, 2022
End Date November 02, 2023
Service Level Standard Material Handling
Global Coverage
NextAvail TechResource Remote
NextAvail TechResource Onsite
Std Office Hrs Std Office Days
No Usage Limitation
Next Cov Day Onsite Response
Standard Parts Logistics
Deliverables Onsite Support
Parts and Material provided
Hardware Problem Diagnosis

Service type Wty: HP Support for Initial Setup
Status ? **Active: Covered under Manufacturer warranty, 2 months remaining.**
Start Date November 03, 2022
End Date January 31, 2023
Service Level Std Office Hrs Std Office Days
NextAvail TechResource Remote
2 Hr Remote Response
Unlimited Named Callers
Deliverables Initial Setup Assistance

HP has checked your product information, including the product and serial numbers, to determine your warranty results.

HP ProDesk 405 G8 Small Form Factor PC (2J2P2AV)



Warranty status details for your product: Active

[Check another product](#)

Serial Number 1CZ23300JS
Product Number 746C4LA

Life Happens!
Protect your device and live fearlessly with an HP Care Pack.
[Extend Coverage >](#)

HP manufacturer/base warranty

Warranty type Manufacturer Warranty
Service type Wty: HP HW Maintenance Onsite Support
Status ? **Active: Covered under Manufacturer warranty, 11 months remaining.**
Start Date November 03, 2022
End Date November 02, 2023
Service Level Standard Material Handling
Global Coverage
NextAvail TechResource Remote
NextAvail TechResource Onsite
Std Office Hrs Std Office Days
No Usage Limitation
Next Cov Day Onsite Response
Standard Parts Logistics
Deliverables Onsite Support
Parts and Material provided
Hardware Problem Diagnosis

Service type Wty: HP Support for Initial Setup
Status ? **Active: Covered under Manufacturer warranty, 2 months remaining.**
Start Date November 03, 2022
End Date January 31, 2023
Service Level Std Office Hrs Std Office Days
NextAvail TechResource Remote
2 Hr Remote Response
Unlimited Named Callers
Deliverables Initial Setup Assistance

HP has checked your product information, including the product and serial numbers, to determine your warranty results.

HP ProDesk 405 G8 Small Form Factor PC (2J2P2AV)



Warranty status details for your product: Active

[Check another product](#)

Serial Number 1CZ23300JT
Product Number 746C4LA



Life Happens!
Protect your device and live fearlessly with an HP
Care Pack.
[Extend Coverage >](#)

HP manufacturer/base warranty

Warranty type Manufacturer Warranty
Service type Wty: HP HW Maintenance Onsite Support
Status Active: Covered under Manufacturer warranty, 11 months remaining.
Start Date November 03, 2022
End Date November 02, 2023
Service Level Standard Material Handling
Global Coverage
NextAvail TechResource Remote
NextAvail TechResource Onsite
Std Office Hrs Std Office Days
No Usage Limitation
Next Cov Day Onsite Response
Standard Parts Logistics
Deliverables Onsite Support
Parts and Material provided
Hardware Problem Diagnosis

Service type Wty: HP Support for Initial Setup
Status Active: Covered under Manufacturer warranty, 2 months remaining.
Start Date November 03, 2022
End Date January 31, 2023
Service Level Std Office Hrs Std Office Days
NextAvail TechResource Remote
2 Hr Remote Response
Unlimited Named Callers
Deliverables Initial Setup Assistance

HP has checked your product information, including the product and serial numbers, to determine your warranty results.

HP ProDesk 405 G8 Small Form Factor PC (2J2P2AV)



Warranty status details for your product: Active

[Check another product](#)

Serial Number 1CZ23300JP
Product Number 746C4LA



Life Happens!
Protect your device and live fearlessly with an HP Care Pack.
[Extend Coverage >](#)

HP manufacturer/base warranty

Warranty type Manufacturer Warranty
Service type Wty: HP HW Maintenance Onsite Support
Status Active: Covered under Manufacturer warranty, 11 months remaining.
Start Date November 25, 2022
End Date November 24, 2023
Service Level Standard Material Handling
Global Coverage
NextAvail TechResource Remote
NextAvail TechResource Onsite
Std Office Hrs Std Office Days
No Usage Limitation
Next Cov Day Onsite Response
Standard Parts Logistics
Deliverables Onsite Support
Parts and Material provided
Hardware Problem Diagnosis

Service type Wty: HP Support for Initial Setup
Status Active: Covered under Manufacturer warranty, 2 months remaining.
Start Date November 25, 2022
End Date February 22, 2023
Service Level Std Office Hrs Std Office Days
NextAvail TechResource Remote
2 Hr Remote Response
Unlimited Named Callers
Deliverables Initial Setup Assistance

HP has checked your product information, including the product and serial numbers, to determine your warranty results.

HP ProDesk 405 G8 Small Form Factor PC (2J2P2AV)



Warranty status details for your product: Active

[Check another product](#)

Serial Number 1CZ23300JV

Product Number 746C4LA



Life Happens!

Protect your device and live fearlessly with an HP Care Pack.

[Extend Coverage >](#)

HP manufacturer/base warranty

Warranty type	Manufacturer Warranty
Service type	Wty: HP HW Maintenance Onsite Support
Status	Active: Covered under Manufacturer warranty, 11 months remaining.
Start Date	November 25, 2022
End Date	November 24, 2023
Service Level	Standard Material Handling Global Coverage NextAvail TechResource Remote NextAvail TechResource Onsite Std Office Hrs Std Office Days No Usage Limitation Next Cov Day Onsite Response Standard Parts Logistics
Deliverables	Onsite Support Parts and Material provided Hardware Problem Diagnosis

Service type	Wty: HP Support for Initial Setup
Status	Active: Covered under Manufacturer warranty, 2 months remaining.
Start Date	November 25, 2022
End Date	February 22, 2023
Service Level	Std Office Hrs Std Office Days NextAvail TechResource Remote 2 Hr Remote Response Unlimited Named Callers
Deliverables	Initial Setup Assistance

HP has checked your product information, including the product and serial numbers, to determine your warranty results.



HP ProDesk 405 G8 Small Form Factor PC (2J2P2AV)



Warranty status details for your product: Active

[Check another product](#)

Serial Number 1CZ23300JW

Product Number 746C4LA



Life Happens!

Protect your device and live fearlessly with an HP Care Pack.
[Extend Coverage >](#)

× HP manufacturer/base warranty

Warranty type	Manufacturer Warranty
Service type	Wty: HP HW Maintenance Onsite Support
Status ?	Active: Covered under Manufacturer warranty, 11 months remaining.
Start Date	November 25, 2022
End Date	November 24, 2023
Service Level	Standard Material Handling Global Coverage NextAvail TechResource Remote NextAvail TechResource Onsite Std Office Hrs Std Office Days No Usage Limitation Next Cov Day Onsite Response Standard Parts Logistics
Deliverables	Onsite Support Parts and Material provided Hardware Problem Diagnosis

Service type	Wty: HP Support for Initial Setup
Status ?	Active: Covered under Manufacturer warranty, 2 months remaining.
Start Date	November 25, 2022
End Date	February 22, 2023
Service Level	Std Office Hrs Std Office Days NextAvail TechResource Remote 2 Hr Remote Response Unlimited Named Callers
Deliverables	Initial Setup Assistance

HP has checked your product information, including the product and serial numbers, to determine your warranty results.





b. COMPROBANTE DE ENTREGA TRANSPORTADORA

3041779992		3041779992		MERCANCIA INDUSTRIAL	
ITAGUI		No. Remisión 2080307597		Segunda GTI - ALBERTO	
ANTIOQUIA	F.P: CRE	PESO Kg 255		VOL 60-45-45	T.E NORMAL
2 GTI - ALBERT		Total PZ		VIA Cobrar	
AGENTE: IMPRESISTEM S.A.S TA - CUNDINAMARCA : 3165241639		0200		17	
DIR: CR 49 50A 20 CC GRAN MANZANA 3 PS		75		SA11	
Recibo a conformidad (observaciones en la entrega):		M1		S51	
Zona carga		M1		Zona Documento	
ATINATARIO: MUNICIPIO DE ITAGUI NIT: 973639 : 3015805032 : CR 49 50A 20 CC GRAN MANZANA 3 PS		Recibo a conformidad (observaciones en la entrega):  c.c 71361669		Fecha Entrega: 8/11/2022 11:00am	



Gestión de Tecnología Informática





Piezas: 3
MERCANCIA INDUSTRIAL
 Código SER: SER3067 RTC No **3041782524**

NORMAL M.T: TERRESTRE F.P: CREDITO

DESTINO: MUNICIPIO DE ITAGUI
 CR 49 50A 20 CC GRAN MANZANA 3 PS *Rafael* *MARIN*

Ciudad: ITAGUI Depto: ANTIOQUIA Cod. Postal: 055412104
 Tel: 3015805032 E-mail:

Dice Contener: PRODUCTOS TECNOLOGIA

Vr. Declarado: \$ 8.849.604 Peso (Vol): 0 Peso (Kgr): 36
 Vr. Flete: No. Factura: No Remisión: 2060313066
 Vr. Sobreflete: No. Sobrepeso: No Guía Retorno:

Vr. Total:

RTC No. 3041782524 Ref:

Fecha Divulgo: Retorno:

1 Desconocido 2 No Reclamado 3 Dirección Errada
 4 Retenido 5 Otra (Indicar Causa) DIA MES AÑO
 6 No recibe

FECHA Y HORA DE INTENTO DE ENTREGA

1^{ra} HORA | DIA | MES | AÑO 2^{da} HORA | DIA | MES | AÑO 3^{ra} HORA | DIA | MES | AÑO

Nombre: IMPRESISTEM S A S
 Dirección: AUTOP MEDALLA CALLE 80 PM 2 VIA SIBERIA PE EL TECNOLOGICO BO 1
 Ciudad: COTA Departamento: CUNDINAMARCA Tel: 318241839

Observaciones en la entrega:

Quien entrega: *Declaro*
 Fecha y hora de entrega: *20/11/17*
 Hora: *12:00* | DIA: *11* | MES: *11* | AÑO: *2017*

RECIBO A CONFORMIDAD (NOMBRE LEGIBLE, SELLO Y O):
Rafael Angel Marin
 CC: *70 286 578*

c. PRE-FACTURA



GESTION DE TECNOLOGIA INFORMATICA

PROFORMA No: FP-024-2022
PEDIDO CLIENTE 91914

FECHA 15/11/2022
ENTIDAD GTI ALBERTO ALVAREZ LOPEZ
NIT 901.039.927-1

CLIENTE MUNICIPIO DE ITAGUI
NIT 890.980.093

PARTE	DESCRIPCION	CANT	UNIDAD	COSTO UNIT	COSTO TOTAL
CDP 966	ETP-CCD-1 ETP - ETP - 5400 - AVANZADA - NA - SSD - 500 GB PCIe - 16 GB - Zona 1	10,0	0,55 Metros	\$ 2.887.500,00	\$ 28.875.000,00
CDP 966	COMPONENTE-CCD-69. COMPONENTE - COMPONENTE - Certificacion Epeat Gold - NA - NA - NA -	10,0	0,55 Metros	\$ 60.280,00	\$ 602.800,00
CDP 966	IVA	1,0	0,55 Metros	\$ 5.600.782,00	\$ 5.600.782,00
					\$ 35.078.582,00

MONEDA PESOS
FORMA DE PAGO 30 DIAS
TRM DIA DE FACTURACION
DATOS BANCARIOS BANCO DAVIVIENDA
TIPO CUENTA Corriente
No. DE CUENTA 0861-6999-1003
BENEFICIARIO GTI- ALBERTO ALVAREZ LOPEZ SAS
NIT 901,039,927-1

OBSERVACION: Estos son equipos nuevos ceros horas de uso y que no han sido re manufacturados, ni repotenciados.

Calle 64A No. 21-10 local 18 Edificio Portal del Cable. PBX 8852626. Email: gti@gti.net.co