

PROTOCOLO FORMATO DE GARANTIAS - Compra y Alquiler de Computadores y Periféricos - ETP III - CCE-280-AMP-2021

CLIENTE: MINISTERIO DE EDUCACION NACIONAL

Los equipos suministrados cuentan con garantía directa del fabricante, en este caso los equipos (ETP) suministrados son marca HP, se recomienda a la entidad contactar de manera directa al fabricante para una efectiva y rápida solución, los datos del fabricante son:

Link para la asistencia técnica:

<https://www.hp.com/co-es/contact-hp/phone-assist.html>

IMPORTANTE: Cuando los contacte, por favor asegúrese de contar con la información del modelo de su producto, número de serie, fecha y número de la factura de compra de su producto. Esta información es requerida para poder darle un buen servicio.

Números de teléfonos:	Productos:	Horario de servicio:
Soporte Técnico Garantías Línea gratuita nacional: 01-800-519-1293 Bogotá Local: 601-380-8246	Productos Empresariales	Lunes a Viernes de 8:00 a 18:00 hrs.

Si la entidad presenta dificultades con el proceso de garantía ante el fabricante puede escalar el caso a COLSOF SAS como proveedor de estos equipos a través del siguiente procedimiento:



CENTRO DE SERVICIO AL USUARIO

Procedimiento para Solicitud de Servicios

1. Para el reporte de **Incidentes**, una vez detectada la falla que implique el trámite de garantía del elemento, deberá contactar a nuestro Centro de Servicio al Usuario por los siguientes medios:
Línea de Atención Única: **3123338609**
Correo Electrónico: **aservicios1@colsof.com.co**
2. Para Trámites de Garantías se requiere diligenciar el Formato de Garantías (**TS-RG-05**) y enviarlo al correo de nuestro Centro de Servicios al Usuario: **aservicios1@colsof.com.co**
3. Suministrar los datos de contacto:
 - Nombre del Cliente
 - Nombre persona Contacto
 - Ciudad de Atención
 - Correo Electrónico de Contacto
 - Número de Contrato
 - Dirección de Atención
 - Teléfono de Contacto
4. El formato deberá ser diligenciado en su totalidad, teniendo especial énfasis en la siguiente información sobre el requerimiento:
 - Tipo de Equipo
 - Serial del Equipo
 - Pruebas realizadas
 - Marca y Modelo del Equipo
 - Falla que presenta el Equipo
5. De ser necesario, recibirá instrucciones para realizar pruebas adicionales.
6. Antes de finalizar la llamada, recibirá el número de caso con el que será atendido y el cual es el identificador para posteriores requerimientos o solicitud del estado del caso.
7. Vía correo electrónico recibirá el **número de llamada** con el que será atendido y el cual es el identificador para posteriores requerimientos.
8. De requerir información adicional, podrá contactarse con nuestro Centro de Servicio por los medios señalados en el numeral 1.

NIVEL DE ESCALAMIENTO	NOMBRE	TELEFONO	MAIL	CARGO
PRIMER NIVEL	N/A		aservicios1@colsof.com.co	Analista Mesa de Servicios
SEGUNDO NIVEL	Heidy Guerrero	3163892983	hguerrero@colsof.com.co	Gestor de contrato
TERCER NIVEL	Diana Carolina Mateus	3202884868	dmateus@colsof.com.co	Lider CSU



Ticket Interno

Código: TS-RG-05

Fecha de Solicitud

Versión: 3

Información de Contrato con Colsof

Nombre del Cliente	
Contrato N°	
Objeto del contrato	

Contactos

Datos Contacto Principal		Datos del Contacto Alterno	
Nombre Completo		Nombre Completo	
Correo Electrónico		Correo Electrónico	
Celular		Celular	
Teléfono Fijo (Incluir Indicativo)		Teléfono Fijo (Incluir Indicativo)	
Extensión		Extensión	
Área de Ubicación		Área de Ubicación	
Dirección (Incluir Piso / Número Oficina, etc.)		Dirección (Incluir Piso / Número Oficina, etc.)	
Ciudad		Ciudad	

Datos Técnicos

Datos del Equipo		Diagnóstico y Pruebas Realizadas
Tipo de Solicitud		
Tipo de Equipo		
Marca de Equipo		
Modelo		
Serial		
Observaciones		



HP ProBook 445 14 inch G10 Notebook PC

ETP-PT-16

Impulse el crecimiento comercial con la laptop HP ProBook 445 y grado comercial. Céntrese en las prioridades del negocio con un dispositivo correctamente equipado para el trabajo híbrido que resulta duradero y puede actualizarse con facilidad para lograr rendimiento a largo plazo.



Procesador	AMD Ryzen™ 5 7530U 6 núcleos de CPU, 12 hilos, frecuencia base de 2.0 GHz hasta 4.5 GHz frecuencia Max Boost, 19 MB de Cache L2+L3 PCMARK 10 - 4500 pts
Chipset	Integrado en el procesador
Sistema Operativo	FreeDOS en Español.
Pantalla/Monitor	LCD delgada de 14" en diagonal con retroiluminación LED, HD (1366x768), con antirreflejo, de 250 nits, SVA
Tarjeta de video	Integrada , AMD Radeon™ Graphics
Memoria RAM	16 GB (1x16GB) DDR4 3200 Soporta hasta 32 GB en (2) slots SODIMM
Almacenamiento	Unidad de estado sólido M.2 SSD 512 GB PCIe NVMe Value
Teclado	HP Premium, resistente a derrames en Español
Mouse/Apuntador	ClickPad con soporte para gestos y toques múltiples
Audio	HD codec Realtek ALC3247-CG con 2 altavoces estéreo integrados
Cámara Web	Webcam HD 720p con arreglo de 2 micrófonos integrados
Conectividad	LAN: Realtek RTL8111HSH 10/100/1000 Integrated NIC WLAN: Mediatek RZ616 Wi-Fi 6E + Bluetooth 5.3
Batería	Polímero de 3 celdas 42.75 Whr de larga duración con autonomía de hasta 14 horas y 15 minutos (MobileMark2018) en Win 10
Adaptador AC	Adaptador AC de 45 Watt

Puertos/Slots	(3) USB 3.2 Gen 1 (1 puerto energizado) (1) USB-C 3.2 Gen 2 (Entrega de energía y DisplayPort) 10Gbps (1) HDMI 2.1	(1) Ethernet RJ-45 (1) Conector para auricular/micrófono en combo (1) Conector para adaptador de energía AC
Certificaciones	FCC, UL, CE, RoHS, ISO 14001-9001, MIL-STD-810H	
Administración de Seguridad	TPM 2.0 Embebido Ranura nano para guaya de seguridad Lector de huellas dactilares HP Tamper Lock	
Garantía	5 Años de garantía de forma 5/5/5 (Partes/ Mano de obra/ En sitio) a través del carepack HP	

PCMark 10 Express

6 031

Essentials

10 617

Apps Start-up score

16 014

Video Conferencing Score

8 411

Web Browsing Score

8 886

Productivity

9 363

Spreadsheets Score

12 055

Writing Score

7 273

Validation

VALID

Run information

Result name

DESKTOP-I4JE6ME_2024-02-08 10:58:29.0

Result details

SystemInfo Version

5.30.850

UI Version

2.1.2506 64

Test Version

1.0

Date

February 8 2024

Duration

15 m 28 s

Id

dd616125-41ca-4821-9fd3-26a258ded9f5

Test settings

Default settings used

Yes

Additional output

Video Conferencing

Video Encoder, AMDh264Encoder

Video Conferencing

OpenCL, gfx90c

Spreadsheets

OpenCL, gfx90c

System details

General

Operating System	Windows 10 Pro 64-bit 10.0.19045
Motherboard	HP 8B5C
Memory	15682 MB DDR4 @1598 Mhz
BIOS	HP V78 Ver. 01.04.01
System Drive Model	
Resolution	1366 x 768 px
Power plan	Equilibrado

Processor

CPU	AMD Ryzen 5 7530U with Radeon Graphics
Clock Frequency	2000 MHz
Max Frequency	2000 MHz
Processors	12
Cores	12x 1 (1)
Package	

Graphic adapters

GPU	AMD Radeon (TM) Graphics
Manufacturer	AMD/ATI
Dedicated Video Memory	
Total Available Graphics Memory	7841 MB
Core Clock	2000 MHz
Boost Clock	
Memory Clock	1600 MHz
Driver Version	31.0.21018.9001
Display 1	\\.\DISPLAY1 (1366 x 768, 100% DPI scaling)

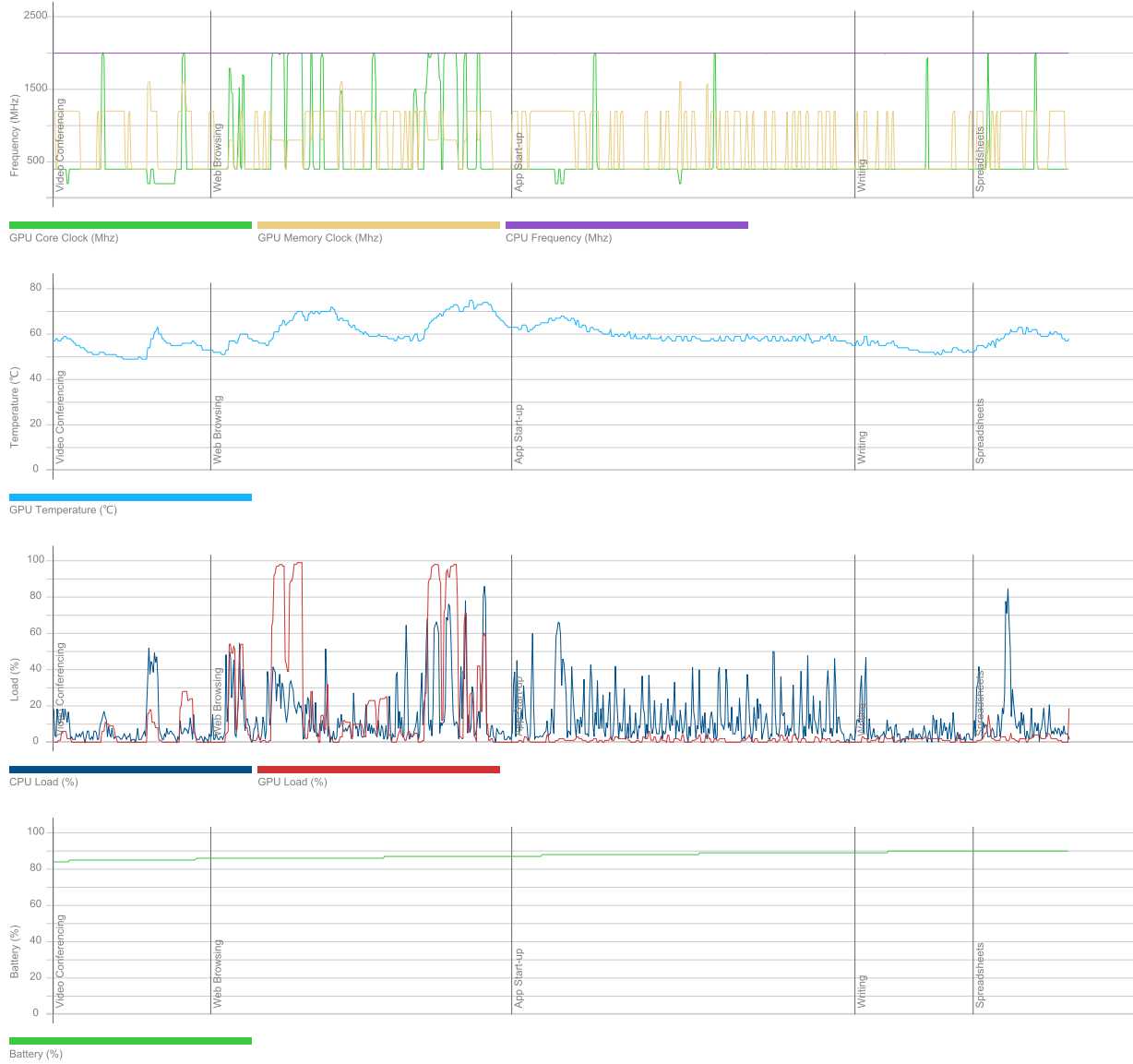
Storage devices

Drive 0	476 GB
Drive model	KBG50ZNV512G KIOXIA
Drive type	SSD
External drive	No (SCSI)
Partition 0	100 MB
Partition 1	C: (NTFS) 476 GB (421 GB free)
Partition 2	543 MB

Batteries

Battery	Primary
Manufacturer	Hewlett-Packard
Type	Unknown
Cycle count	1
Designed capacity	42772 mWh
Full charged capacity	43764 mWh
Wear level	-2,3%

Hardware monitoring



PCMark 10 Express

6 081

Essentials

10 537

Apps Start-up score

15 417

Video Conferencing Score

8 421

Web Browsing Score

9 013

Productivity

9 590

Spreadsheets Score

12 469

Writing Score

7 376

Validation

VALID

Run information

Result name

DESKTOP-ILQ39TF_2024-02-08 10:58:47.0

Result details

SystemInfo Version

5.30.850

UI Version

2.1.2506 64

Test Version

1.0

Date

February 8 2024

Duration

15 m 29 s

Id

a7ebb8ae-4411-41fa-8c12-8f7edbcdaa6f

Test settings

Default settings used

Yes

Additional output

Video Conferencing

Video Encoder, AMDh264Encoder

Video Conferencing

OpenCL, gfx90c

Spreadsheets

OpenCL, gfx90c

System details

General

Operating System	Windows 10 Pro 64-bit 10.0.19045
Motherboard	HP 8B5C
Memory	15682 MB DDR4 @1598 Mhz
BIOS	HP V78 Ver. 01.04.01
System Drive Model	
Resolution	1366 x 768 px
Power plan	Equilibrado

Processor

CPU	AMD Ryzen 5 7530U with Radeon Graphics
Clock Frequency	2000 MHz
Max Frequency	2011 MHz
Processors	12
Cores	12x 1 (1)
Package	

Graphic adapters

GPU	AMD Radeon (TM) Graphics
Manufacturer	AMD/ATI
Dedicated Video Memory	
Total Available Graphics Memory	7841 MB
Core Clock	2000 MHz
Boost Clock	
Memory Clock	1600 MHz
Driver Version	31.0.21018.9001
Display 1	\\.\DISPLAY1 (1366 x 768, 100% DPI scaling)

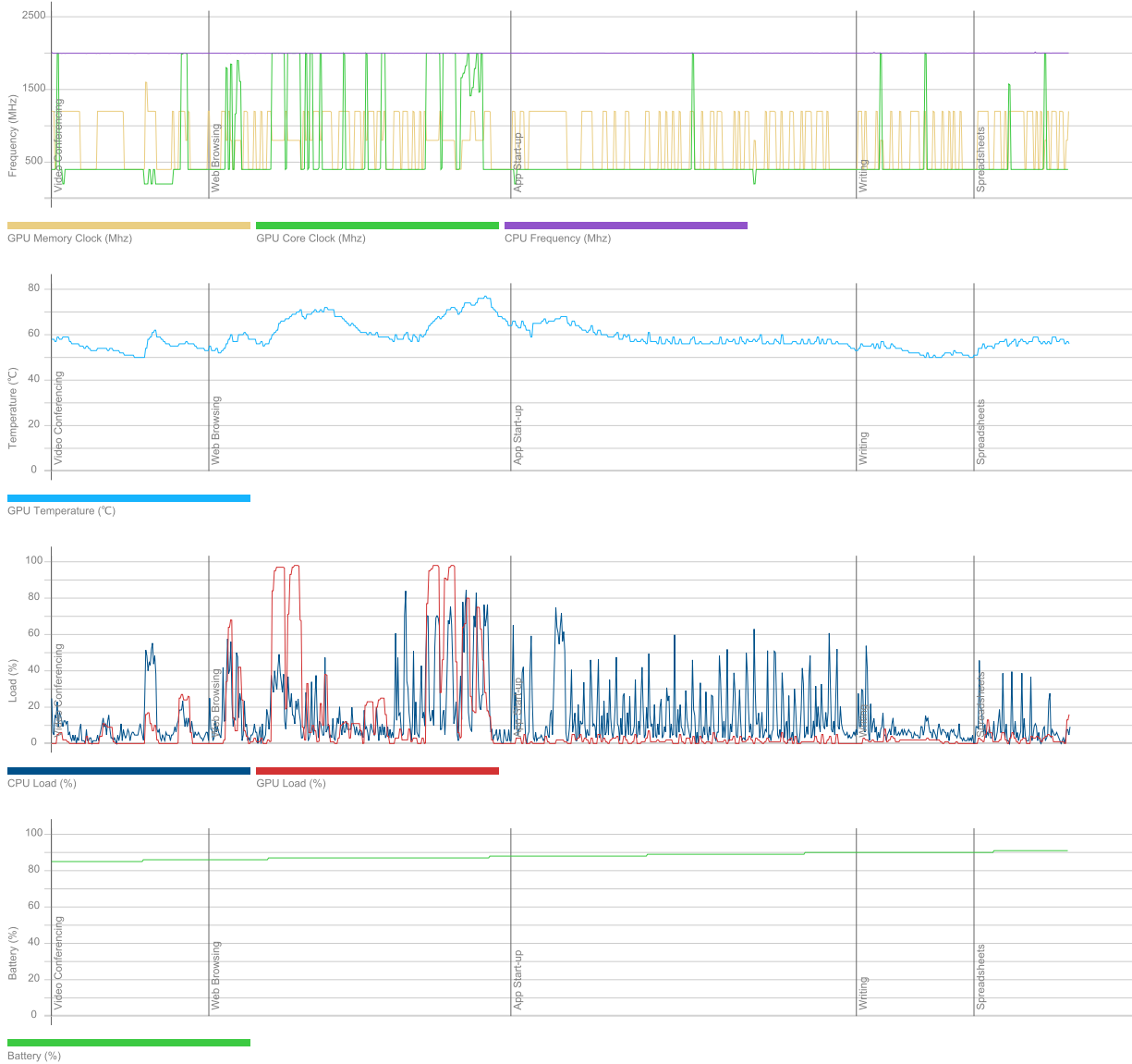
Storage devices

Drive 0	476 GB
Drive model	KBG50ZNV512G KIOXIA
Drive type	SSD
External drive	No (SCSI)
Partition 0	100 MB
Partition 1	C: (NTFS) 476 GB (421 GB free)
Partition 2	543 MB

Batteries

Battery	Primary
Manufacturer	Hewlett-Packard
Type	Unknown
Cycle count	1
Designed capacity	42772 mWh
Full charged capacity	43764 mWh
Wear level	-2,3%

Hardware monitoring



PCMark 10 Express

6 109

Essentials

10 713

Apps Start-up score

16 391

Video Conferencing Score

8 422

Web Browsing Score

8 908

Productivity

9 521

Spreadsheets Score

12 363

Writing Score

7 333

Validation

VALID

Run information

Result name

DESKTOP-JN1E1S3_2024-02-08 11:05:40.0

Result details

SystemInfo Version

5.30.850

UI Version

2.1.2506 64

Test Version

1.0

Date

February 8 2024

Duration

15 m 25 s

Id

b9ff258e-a18b-445f-aa41-efbb81c07c17

Test settings

Default settings used

Yes

Additional output

Video Conferencing

Video Encoder, AMDh264Encoder

Video Conferencing

OpenCL, gfx90c

Spreadsheets

OpenCL, gfx90c

System details

General

Operating System	Windows 10 Pro 64-bit 10.0.19045
Motherboard	HP 8B5C
Memory	15682 MB DDR4 @1598 Mhz
BIOS	HP V78 Ver. 01.04.01
System Drive Model	
Resolution	1366 x 768 px
Power plan	Equilibrado

Processor

CPU	AMD Ryzen 5 7530U with Radeon Graphics
Clock Frequency	2000 MHz
Max Frequency	2018 MHz
Processors	12
Cores	12x 1 (1)
Package	

Graphic adapters

GPU	AMD Radeon (TM) Graphics
Manufacturer	AMD/ATI
Dedicated Video Memory	
Total Available Graphics Memory	7841 MB
Core Clock	2000 MHz
Boost Clock	
Memory Clock	1600 MHz
Driver Version	31.0.21018.9001
Display 1	\\.\DISPLAY1 (1366 x 768, 100% DPI scaling)

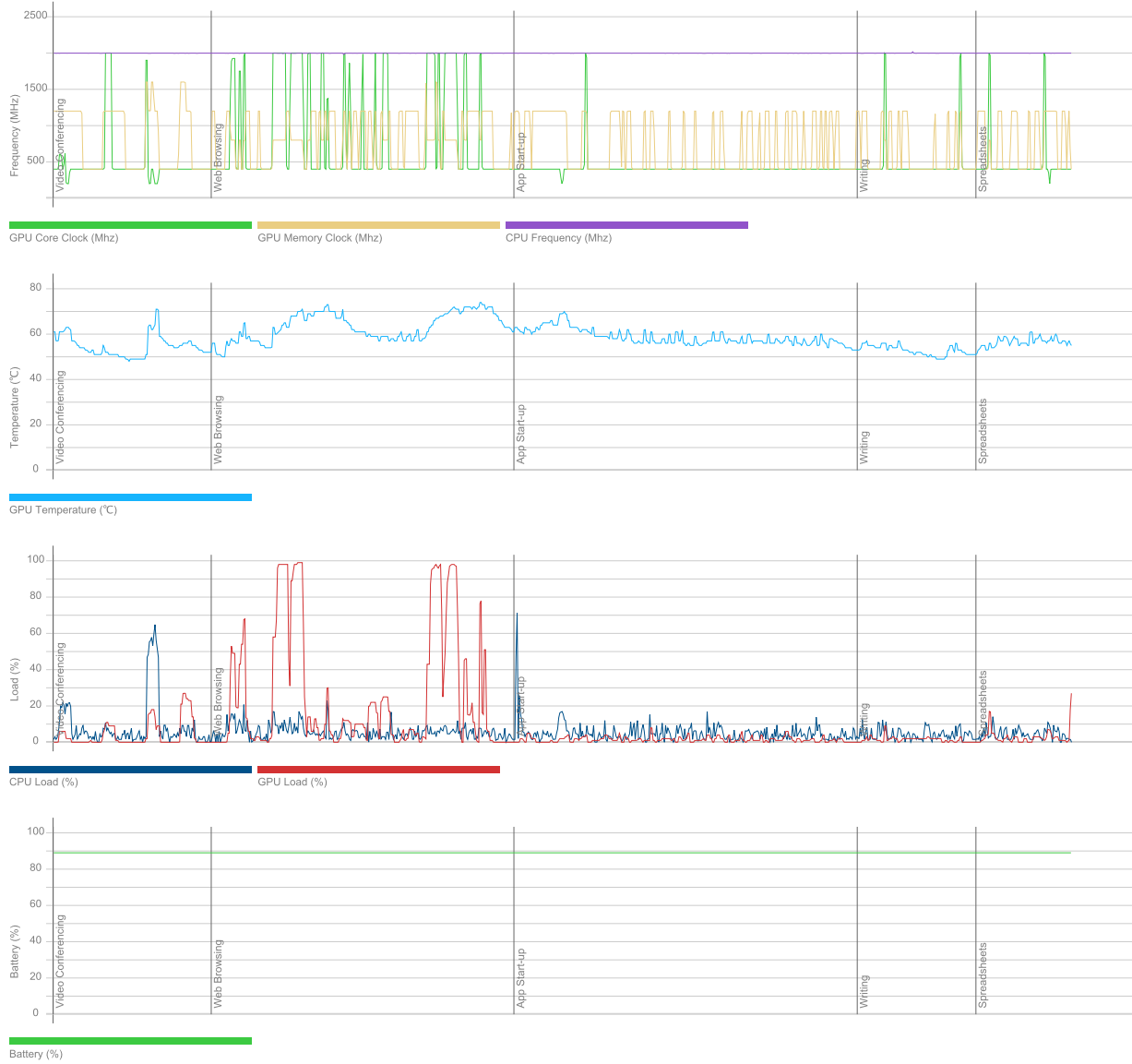
Storage devices

Drive 0	476 GB
Drive model	KBG50ZNV512G KIOXIA
Drive type	SSD
External drive	No (SCSI)
Partition 0	100 MB
Partition 1	C: (NTFS) 476 GB (421 GB free)
Partition 2	543 MB

Batteries

Battery	Primary
Manufacturer	Hewlett-Packard
Type	Unknown
Cycle count	1
Designed capacity	42772 mWh
Full charged capacity	43228 mWh
Wear level	-1,1%

Hardware monitoring



PCMark 10 Express

6 144

Essentials

10 732

Apps Start-up score

16 329

Video Conferencing Score

8 453

Web Browsing Score

8 957

Productivity

9 613

Spreadsheets Score

12 478

Writing Score

7 407

Validation

VALID

Run information

Result name

DESKTOP-1NKBGIS_2024-02-08 12:14:03.0

Result details

SystemInfo Version

5.30.850

UI Version

2.1.2506 64

Test Version

1.0

Date

February 8 2024

Duration

15 m 24 s

Id

e820278a-5b61-4b0a-8010-8e0de0285b2c

Test settings

Default settings used

Yes

Additional output

Video Conferencing

Video Encoder, AMDh264Encoder

Video Conferencing

OpenCL, gfx90c

Spreadsheets

OpenCL, gfx90c

System details

General

Operating System	Windows 10 Pro 64-bit 10.0.19045
Motherboard	HP 8B5C
Memory	15682 MB DDR4
BIOS	HP V78 Ver. 01.04.01
System Drive Model	
Resolution	1366 x 768 px
Power plan	Equilibrado

Processor

CPU	AMD Ryzen 5 7530U with Radeon Graphics
Clock Frequency	2000 MHz
Max Frequency	2019 MHz
Processors	12
Cores	12x 1 (1)
Package	

Graphic adapters

GPU	AMD Radeon (TM) Graphics
Manufacturer	AMD/ATI
Dedicated Video Memory	
Total Available Graphics Memory	7841 MB
Core Clock	2000 MHz
Boost Clock	
Memory Clock	1600 MHz
Driver Version	31.0.21018.9001
Display 1	\\.\DISPLAY1 (1366 x 768, 100% DPI scaling)

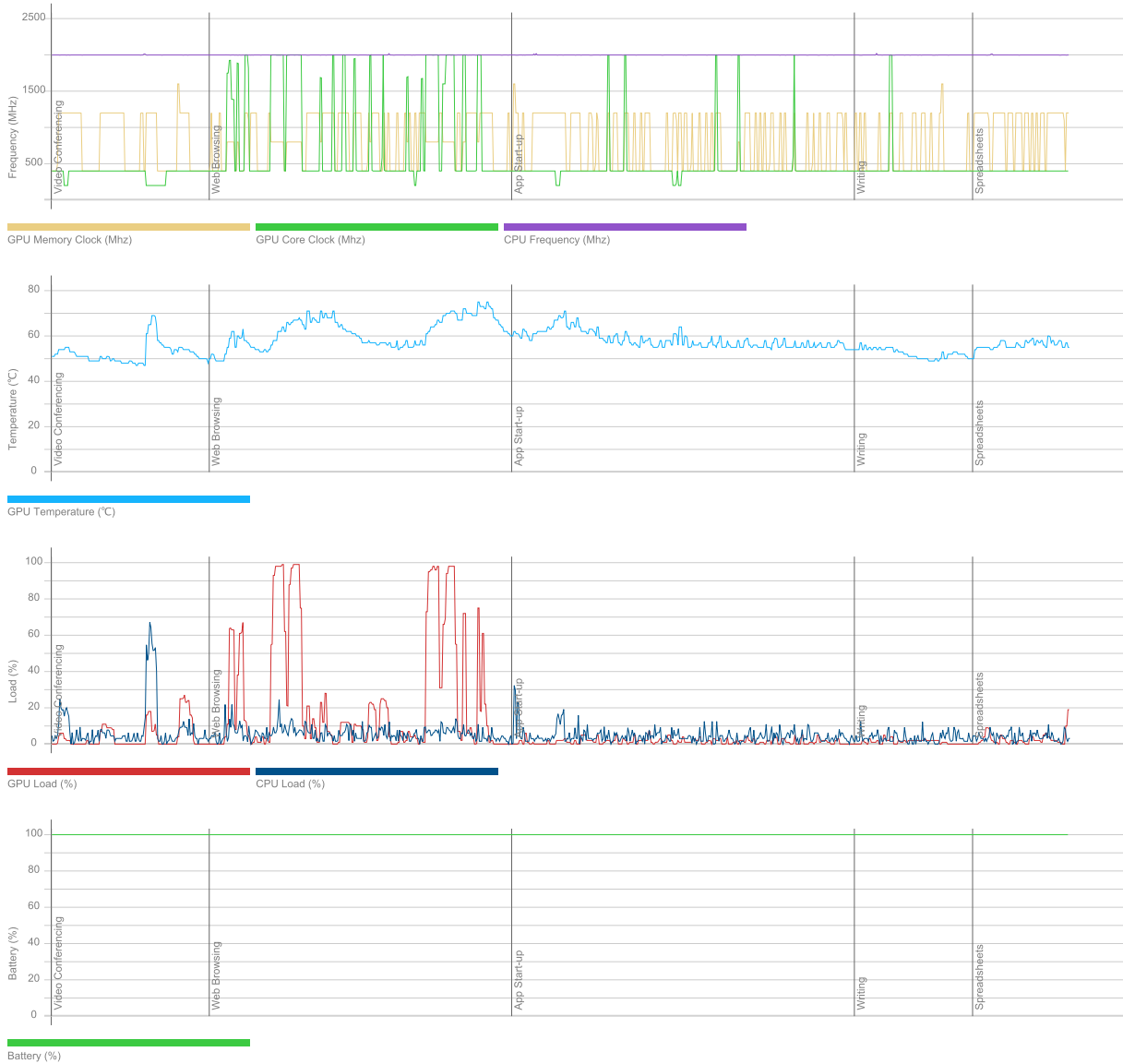
Storage devices

Drive 0	476 GB
Drive model	KBG50ZNV512G KIOXIA
Drive type	SSD
External drive	No (SCSI)
Partition 0	100 MB
Partition 1	C: (NTFS) 476 GB (421 GB free)
Partition 2	543 MB

Batteries

Battery	Primary
Manufacturer	Hewlett-Packard
Type	Unknown
Cycle count	1
Designed capacity	42772 mWh
Full charged capacity	43764 mWh
Wear level	-2,3%

Hardware monitoring



PCMark 10 Express

6 077

Essentials

10 547

Apps Start-up score

15 373

Video Conferencing Score

8 447

Web Browsing Score

9 035

Productivity

9 567

Spreadsheets Score

12 551

Writing Score

7 293

Validation

VALID

Run information

Result name

DESKTOP-2CRBE0K_2024-02-08 11:02:09.0

Result details

SystemInfo Version

5.30.850

UI Version

2.1.2506 64

Test Version

1.0

Date

February 8 2024

Duration

15 m 30 s

Id

92f975b9-f20c-4e24-86d5-0653cd876815

Test settings

Default settings used

Yes

Additional output

Video Conferencing

Video Encoder, AMDh264Encoder

Video Conferencing

OpenCL, gfx90c

Spreadsheets

OpenCL, gfx90c

System details

General

Operating System	Windows 10 Pro 64-bit 10.0.19045
Motherboard	HP 8B5C
Memory	15682 MB DDR4 @1598 Mhz
BIOS	HP V78 Ver. 01.04.01
System Drive Model	
Resolution	1366 x 768 px
Power plan	Equilibrado

Processor

CPU	AMD Ryzen 5 7530U with Radeon Graphics
Clock Frequency	2000 MHz
Max Frequency	2011 MHz
Processors	12
Cores	12x 1 (1)
Package	

Graphic adapters

GPU	AMD Radeon (TM) Graphics
Manufacturer	AMD/ATI
Dedicated Video Memory	
Total Available Graphics Memory	7841 MB
Core Clock	2000 MHz
Boost Clock	
Memory Clock	1600 MHz
Driver Version	31.0.21018.9001
Display 1	\\.\DISPLAY1 (1366 x 768, 100% DPI scaling)

Storage devices

Drive 0	476 GB
Drive model	KBG50ZNV512G KIOXIA
Drive type	SSD
External drive	No (SCSI)
Partition 0	100 MB
Partition 1	C: (NTFS) 476 GB (422 GB free)
Partition 2	543 MB

Batteries

Battery	Primary
Manufacturer	Hewlett-Packard
Type	Unknown
Cycle count	1
Designed capacity	42772 mWh
Full charged capacity	43764 mWh
Wear level	-2,3%

Hardware monitoring



PCMark 10 Express

6 134

Essentials

10 640

Apps Start-up score

15 985

Video Conferencing Score

8 387

Web Browsing Score

8 985

Productivity

9 664

Spreadsheets Score

12 464

Writing Score

7 494

Validation

VALID

Run information

Result name

DESKTOP-4E3SLJD_2024-02-08 10:59:03.0

Result details

SystemInfo Version

5.30.850

UI Version

2.1.2506 64

Test Version

1.0

Date

February 8 2024

Duration

15 m 24 s

Id

fcf456e1-a1a0-4fe0-adde-8da90b65c7d7

Test settings

Default settings used

Yes

Additional output

Video Conferencing

Video Encoder, AMDh264Encoder

Video Conferencing

OpenCL, gfx90c

Spreadsheets

OpenCL, gfx90c

System details

General

Operating System	Windows 10 Pro 64-bit 10.0.19045
Motherboard	HP 8B5C
Memory	15682 MB DDR4 @1598 Mhz
BIOS	HP V78 Ver. 01.04.01
System Drive Model	
Resolution	1366 x 768 px
Power plan	Equilibrado

Processor

CPU	AMD Ryzen 5 7530U with Radeon Graphics
Clock Frequency	2000 MHz
Max Frequency	2020 MHz
Processors	12
Cores	12x 1 (1)
Package	

Graphic adapters

GPU	AMD Radeon (TM) Graphics
Manufacturer	AMD/ATI
Dedicated Video Memory	
Total Available Graphics Memory	7841 MB
Core Clock	2000 MHz
Boost Clock	
Memory Clock	1600 MHz
Driver Version	31.0.21018.9001
Display 1	\\.\DISPLAY1 (1366 x 768, 100% DPI scaling)

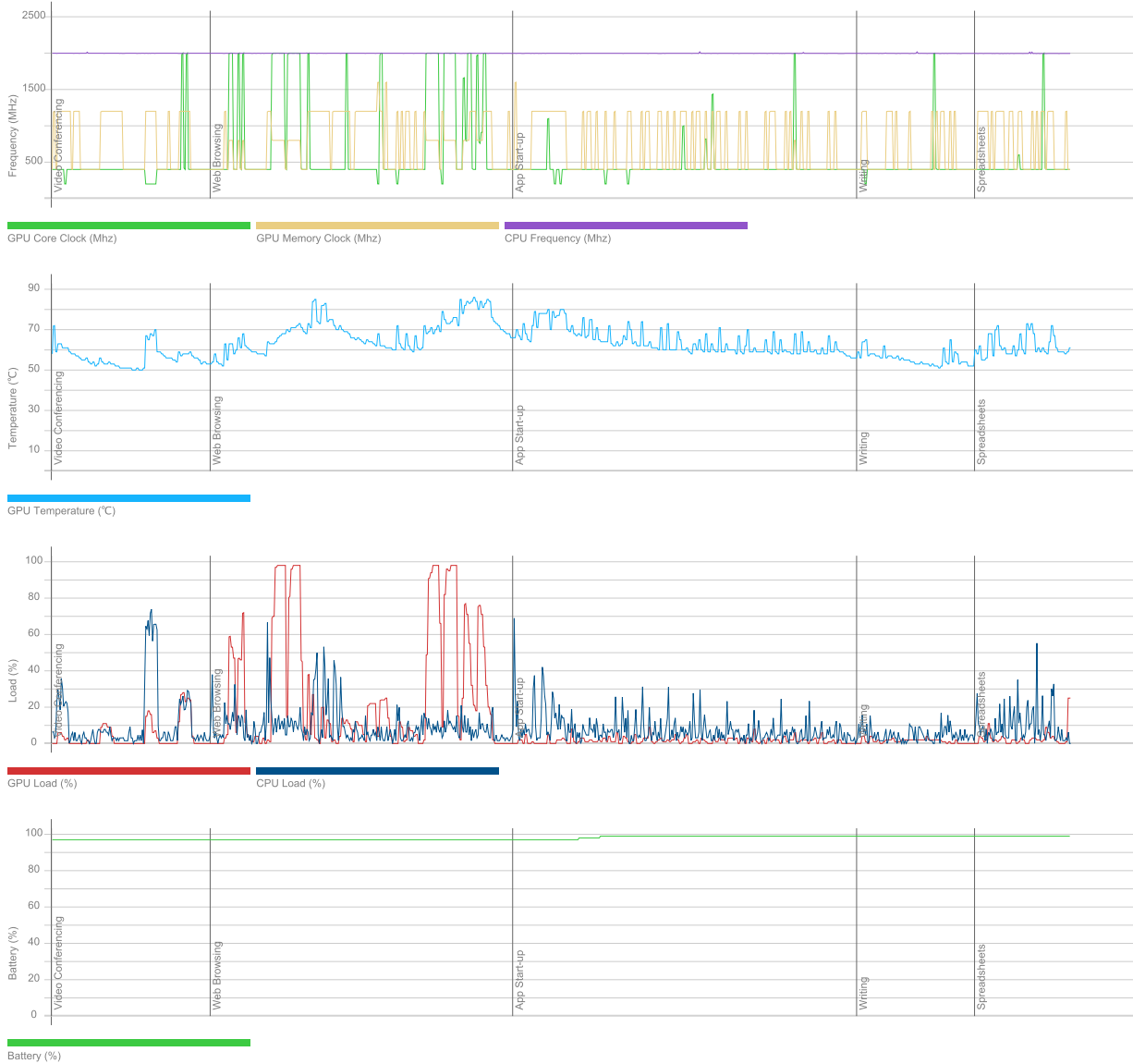
Storage devices

Drive 0	476 GB
Drive model	KBG50ZNV512G KIOXIA
Drive type	SSD
External drive	No (SCSI)
Partition 0	100 MB
Partition 1	C: (NTFS) 476 GB (423 GB free)
Partition 2	543 MB

Batteries

Battery	Primary
Manufacturer	Hewlett-Packard
Type	Unknown
Cycle count	1
Designed capacity	42772 mWh
Full charged capacity	43764 mWh
Wear level	-2,3%

Hardware monitoring



PCMark 10 Express

6 218

Essentials

10 838

Apps Start-up score

16 678

Video Conferencing Score

8 458

Web Browsing Score

9 026

Productivity

9 747

Spreadsheets Score

12 710

Writing Score

7 476

Validation

VALID

Run information

Result name

DESKTOP-4HMUUD5_2024-02-08 11:05:37.0

Result details

SystemInfo Version

5.30.850

UI Version

2.1.2506 64

Test Version

1.0

Date

February 8 2024

Duration

15 m 22 s

Id

14251ca0-8ecf-44b8-8342-b98909a01937

Test settings

Default settings used

Yes

Additional output

Video Conferencing

Video Encoder, AMDh264Encoder

Video Conferencing

OpenCL, gfx90c

Spreadsheets

OpenCL, gfx90c

System details

General

Operating System	Windows 10 Pro 64-bit 10.0.19045
Motherboard	HP 8B5C
Memory	15682 MB DDR4 @1598 Mhz
BIOS	HP V78 Ver. 01.04.01
System Drive Model	
Resolution	1366 x 768 px
Power plan	Equilibrado

Processor

CPU	AMD Ryzen 5 7530U with Radeon Graphics
Clock Frequency	2000 MHz
Max Frequency	2016 MHz
Processors	12
Cores	12x 1 (1)
Package	

Graphic adapters

GPU	AMD Radeon (TM) Graphics
Manufacturer	AMD/ATI
Dedicated Video Memory	
Total Available Graphics Memory	7841 MB
Core Clock	2000 MHz
Boost Clock	
Memory Clock	1600 MHz
Driver Version	31.0.21018.9001
Display 1	\\.\DISPLAY1 (1366 x 768, 100% DPI scaling)

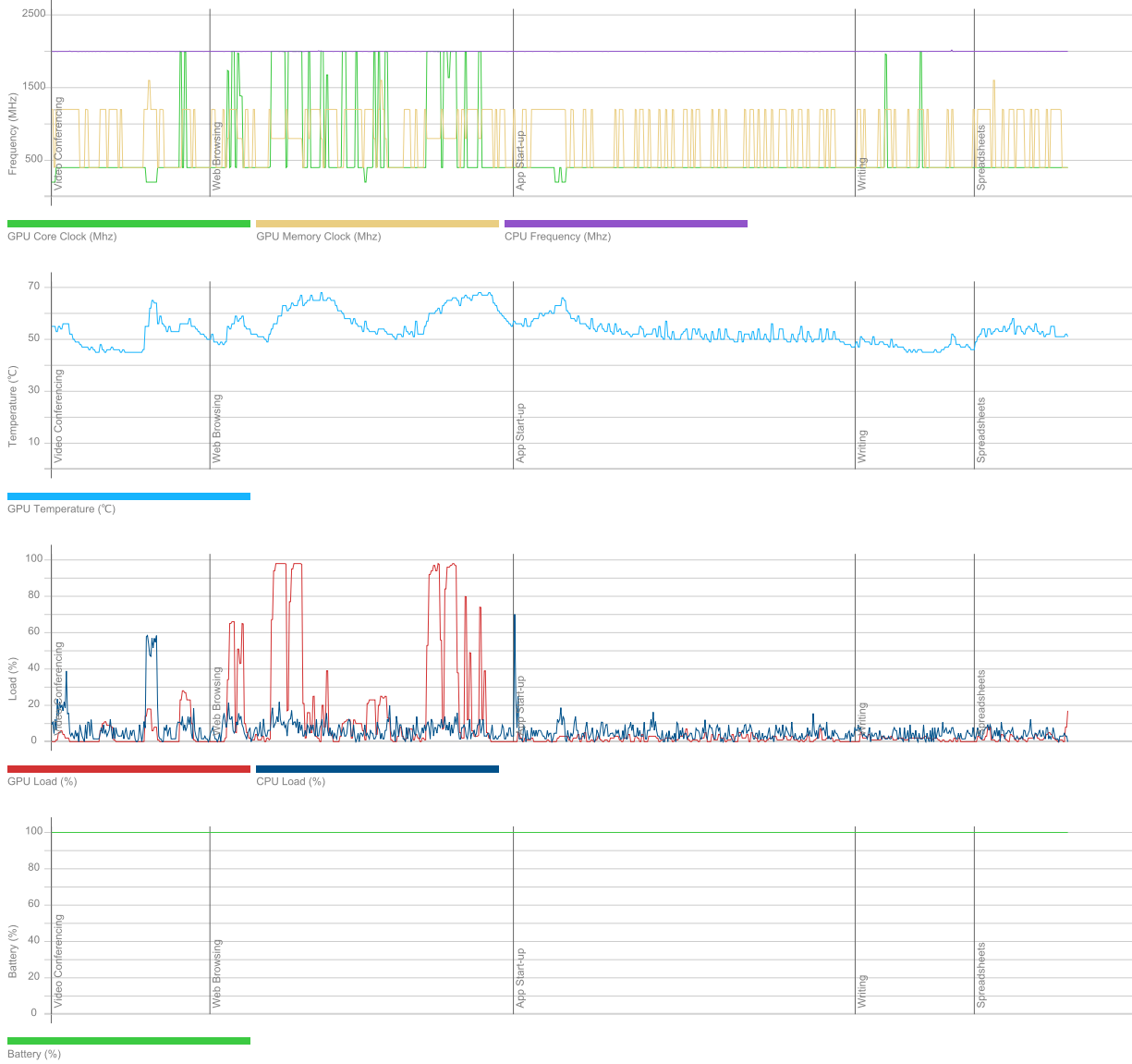
Storage devices

Drive 0	476 GB
Drive model	KBG50ZNV512G KIOXIA
Drive type	SSD
External drive	No (SCSI)
Partition 0	100 MB
Partition 1	C: (NTFS) 476 GB (422 GB free)
Partition 2	543 MB

Batteries

Battery	Primary
Manufacturer	Hewlett-Packard
Type	Unknown
Cycle count	1
Designed capacity	42772 mWh
Full charged capacity	43764 mWh
Wear level	-2,3%

Hardware monitoring



PCMark 10 Express

6 108

Essentials

10 600

Apps Start-up score

15 671

Video Conferencing Score

8 444

Web Browsing Score

9 001

Productivity

9 616

Spreadsheets Score

12 583

Writing Score

7 350

Validation

VALID

Run information

Result name

DESKTOP-5PAN491_2024-02-08 10:59:17.0

Result details

SystemInfo Version

5.30.850

UI Version

2.1.2506 64

Test Version

1.0

Date

February 8 2024

Duration

15 m 28 s

Id

5f8d6da5-923b-4366-b04d-1f905b9aad92

Test settings

Default settings used

Yes

Additional output

Video Conferencing

Video Encoder, AMDh264Encoder

Video Conferencing

OpenCL, gfx90c

Spreadsheets

OpenCL, gfx90c

System details

General

Operating System	Windows 10 Pro 64-bit 10.0.19045
Motherboard	HP 8B5C
Memory	15682 MB DDR4 @1598 Mhz
BIOS	HP V78 Ver. 01.04.01
System Drive Model	
Resolution	1366 x 768 px
Power plan	Equilibrado

Processor

CPU	AMD Ryzen 5 7530U with Radeon Graphics
Clock Frequency	2000 MHz
Max Frequency	2019 MHz
Processors	12
Cores	12x 1 (1)
Package	

Graphic adapters

GPU	AMD Radeon (TM) Graphics
Manufacturer	AMD/ATI
Dedicated Video Memory	
Total Available Graphics Memory	7841 MB
Core Clock	2000 MHz
Boost Clock	
Memory Clock	1600 MHz
Driver Version	31.0.21018.9001
Display 1	\\.\DISPLAY1 (1366 x 768, 100% DPI scaling)

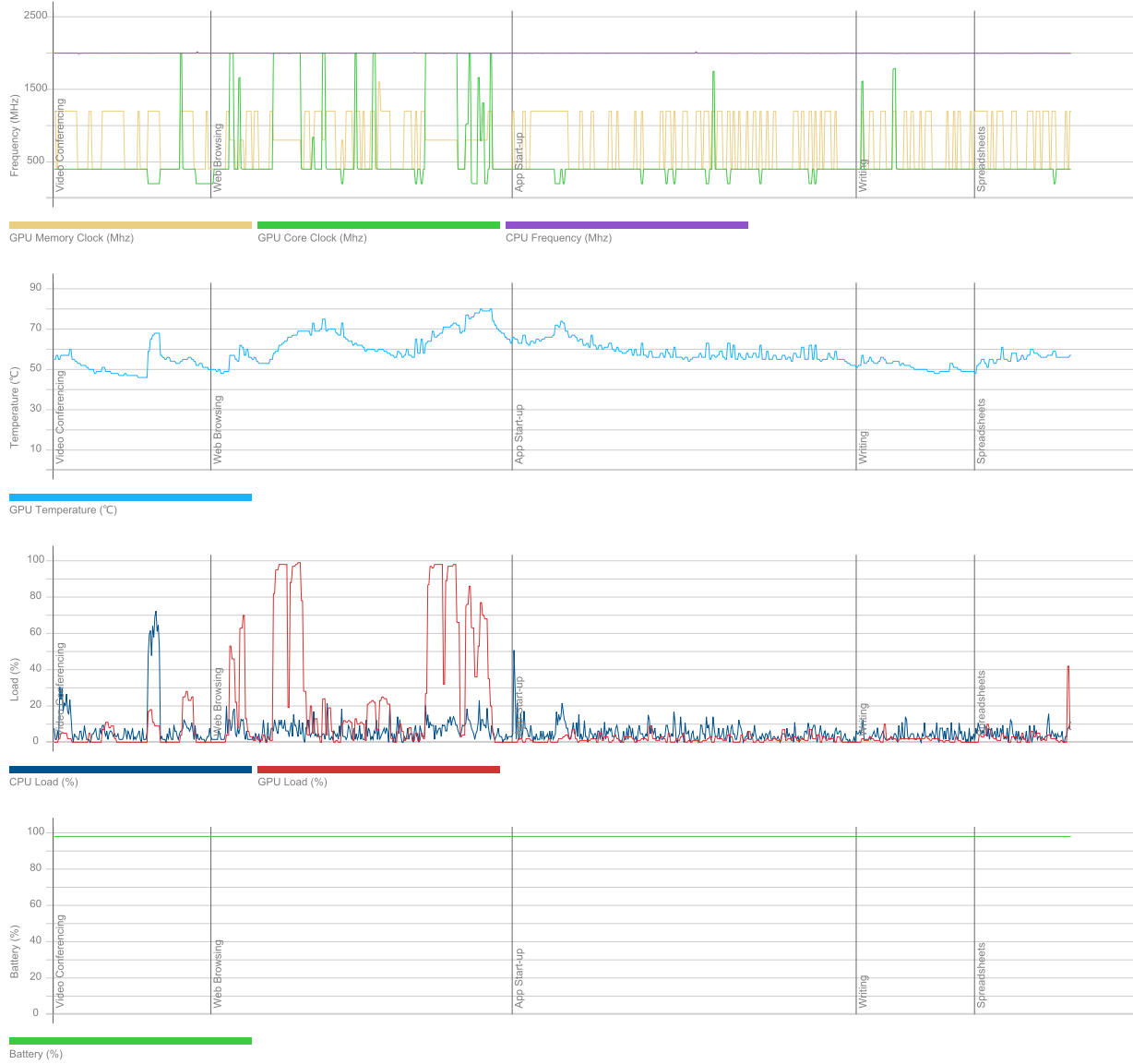
Storage devices

Drive 0	476 GB
Drive model	KBG50ZNV512G KIOXIA
Drive type	SSD
External drive	No (SCSI)
Partition 0	100 MB
Partition 1	C: (NTFS) 476 GB (420 GB free)
Partition 2	543 MB

Batteries

Battery	Primary
Manufacturer	Hewlett-Packard
Type	Unknown
Cycle count	1
Designed capacity	42772 mWh
Full charged capacity	43764 mWh
Wear level	-2,3%

Hardware monitoring



PCMark 10 Express

6 228

Essentials

10 899

Apps Start-up score

16 758

Video Conferencing Score

8 424

Web Browsing Score

9 173

Productivity

9 726

Spreadsheets Score

12 604

Writing Score

7 506

Validation

VALID

Run information

Result name

DESKTOP-5RJAR5H_2024-02-08 12:14:25.0

Result details

SystemInfo Version

5.30.850

UI Version

2.1.2506 64

Test Version

1.0

Date

February 8 2024

Duration

15 m 0 s

Id

3e6a9af7-72c4-43ac-9582-8285a0be98e9

Test settings

Default settings used

Yes

Additional output

Video Conferencing

Video Encoder, AMDh264Encoder

Video Conferencing

OpenCL, gfx90c

Spreadsheets

OpenCL, gfx90c

System details

General

Operating System	Windows 10 Pro 64-bit 10.0.19045
Motherboard	HP 8B5C
Memory	15682 MB DDR4 @1598 Mhz
BIOS	HP V78 Ver. 01.04.01
System Drive Model	
Resolution	1366 x 768 px
Power plan	Equilibrado

Processor

CPU	AMD Ryzen 5 7530U with Radeon Graphics
Clock Frequency	2000 MHz
Max Frequency	2011 MHz
Processors	12
Cores	12x 1 (1)
Package	

Graphic adapters

GPU	AMD Radeon (TM) Graphics
Manufacturer	AMD/ATI
Dedicated Video Memory	
Total Available Graphics Memory	7841 MB
Core Clock	2000 MHz
Boost Clock	
Memory Clock	1600 MHz
Driver Version	31.0.21018.9001
Display 1	\\.\DISPLAY1 (1366 x 768, 100% DPI scaling)

Storage devices

Drive 0	476 GB
Drive model	KBG50ZNV512G KIOXIA
Drive type	SSD
External drive	No (SCSI)
Partition 0	100 MB
Partition 1	C: (NTFS) 476 GB (421 GB free)
Partition 2	543 MB

Batteries

Battery	Primary
Manufacturer	Hewlett-Packard
Type	Unknown
Cycle count	1
Designed capacity	42772 mWh
Full charged capacity	43228 mWh
Wear level	-1,1%

Hardware monitoring



PCMark 10 Express

6 175

Essentials

10 750

Apps Start-up score

16 482

Video Conferencing Score

8 448

Web Browsing Score

8 924

Productivity

9 693

Spreadsheets Score

12 461

Writing Score

7 540

Validation

ERROR

Run information

Result name

DESKTOP-7F8OPDI_2024-02-08 17:14:03.0

Result details

SystemInfo Version

5.30.850

UI Version

2.1.2506 64

Test Version

1.0

Date

February 8 2024

Duration

15 m 23 s

Id

dccf1284-5049-48c5-9161-88fc509a9663

Test settings

Default settings used

Yes

Additional output

Video Conferencing

Video Encoder, AMDh264Encoder

Video Conferencing

OpenCL, gfx90c

Spreadsheets

OpenCL, gfx90c

System details

General

Operating System	Windows 10 Pro 64-bit 10.0.19045
Motherboard	HP 8B5C
Memory	15682 MB DDR4 @1598 Mhz
BIOS	HP V78 Ver. 01.04.01
System Drive Model	
Resolution	1366 x 768 px
Power plan	Equilibrado

Processor

CPU	AMD Ryzen 5 7530U with Radeon Graphics
Clock Frequency	2000 MHz
Max Frequency	2019 MHz
Processors	12
Cores	12x 1 (1)
Package	

Graphic adapters

GPU	AMD Radeon (TM) Graphics
Manufacturer	AMD/ATI
Dedicated Video Memory	
Total Available Graphics Memory	7841 MB
Core Clock	2000 MHz
Boost Clock	
Memory Clock	1600 MHz
Driver Version	31.0.21018.9001
Display 1	\\.\DISPLAY1 (1366 x 768, 100% DPI scaling)

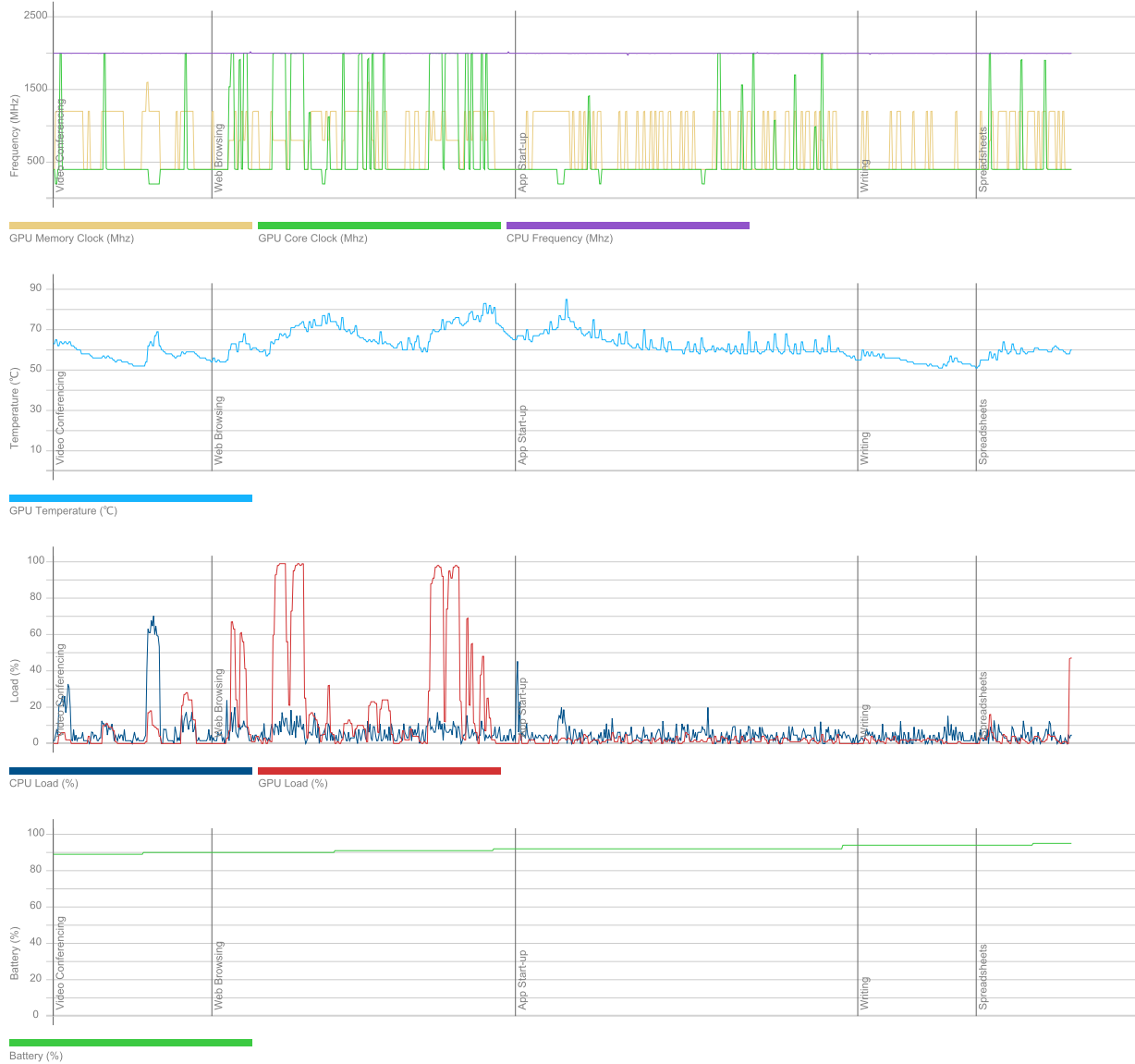
Storage devices

Drive 0	476 GB
Drive model	KBG50ZNV512G KIOXIA
Drive type	SSD
External drive	No (SCSI)
Partition 0	100 MB
Partition 1	C: (NTFS) 476 GB (423 GB free)
Partition 2	543 MB

Batteries

Battery	Primary
Manufacturer	Hewlett-Packard
Type	Unknown
Cycle count	1
Designed capacity	42772 mWh
Full charged capacity	43764 mWh
Wear level	-2,3%

Hardware monitoring



PCMark 10 Express

6 226

Essentials

10 893

Apps Start-up score

16 973

Video Conferencing Score

8 432

Web Browsing Score

9 033

Productivity

9 726

Spreadsheets Score

12 544

Writing Score

7 542

Validation

ERROR

Run information

Result name

DESKTOP-8SBTC3E_2024-02-08 17:14:25.0

Result details

SystemInfo Version

5.30.850

UI Version

2.1.2506 64

Test Version

1.0

Date

February 8 2024

Duration

15 m 20 s

Id

be1f61cc-a2b0-48b1-b558-e321efc2c8dd

Test settings

Default settings used

Yes

Additional output

Video Conferencing

Video Encoder, AMDh264Encoder

Video Conferencing

OpenCL, gfx90c

Spreadsheets

OpenCL, gfx90c

System details

General

Operating System	Windows 10 Pro 64-bit 10.0.19045
Motherboard	HP 8B5C
Memory	15682 MB DDR4 @1598 Mhz
BIOS	HP V78 Ver. 01.04.01
System Drive Model	
Resolution	1366 x 768 px
Power plan	Equilibrado

Processor

CPU	AMD Ryzen 5 7530U with Radeon Graphics
Clock Frequency	2000 MHz
Max Frequency	2016 MHz
Processors	12
Cores	12x 1 (1)
Package	

Graphic adapters

GPU	AMD Radeon (TM) Graphics
Manufacturer	AMD/ATI
Dedicated Video Memory	
Total Available Graphics Memory	7841 MB
Core Clock	2000 MHz
Boost Clock	
Memory Clock	1600 MHz
Driver Version	31.0.21018.9001
Display 1	\\.\DISPLAY1 (1366 x 768, 100% DPI scaling)

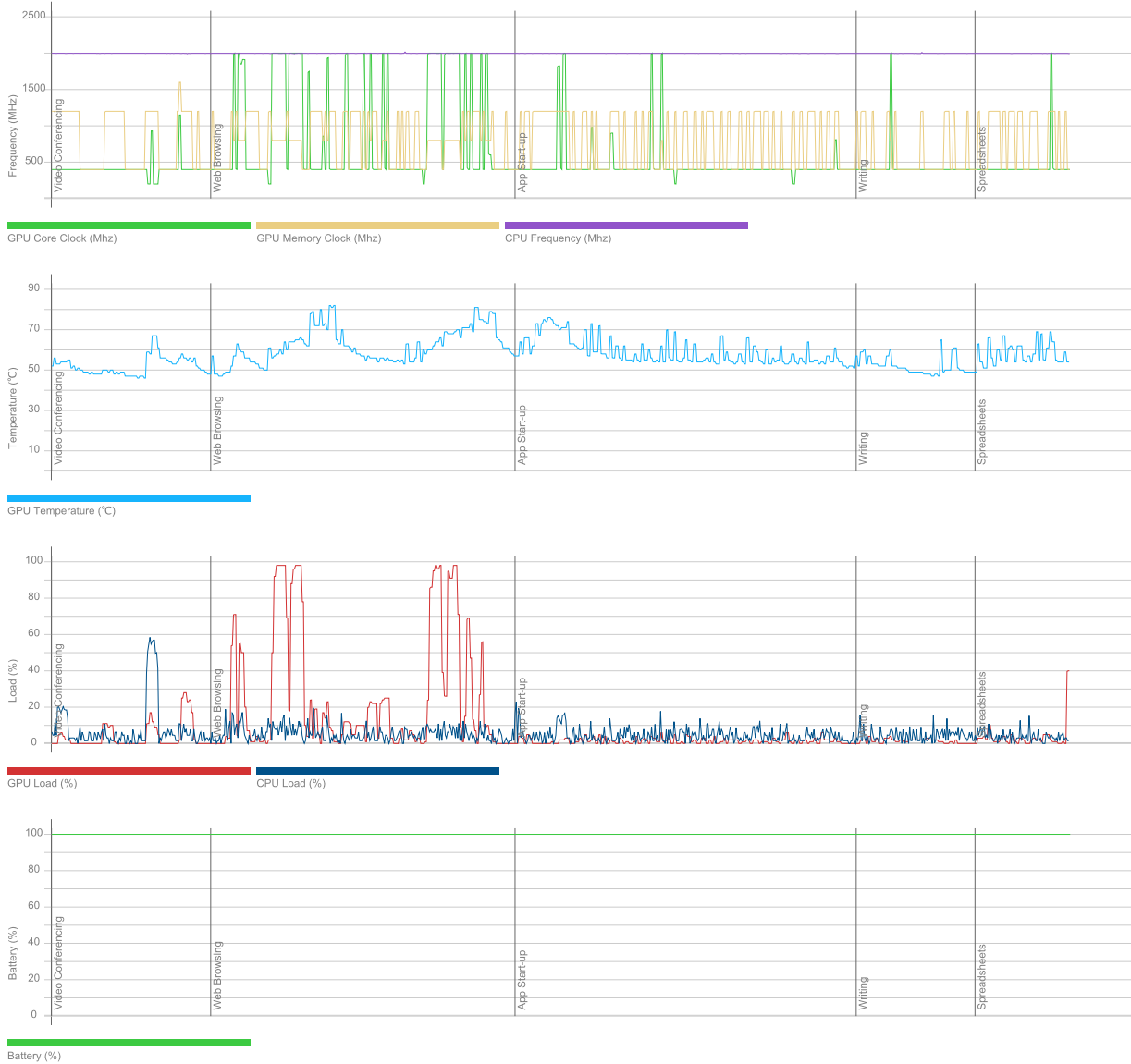
Storage devices

Drive 0	476 GB
Drive model	KBG50ZNV512G KIOXIA
Drive type	SSD
External drive	No (SCSI)
Partition 0	100 MB
Partition 1	C: (NTFS) 476 GB (423 GB free)
Partition 2	543 MB

Batteries

Battery	Primary
Manufacturer	Hewlett-Packard
Type	Unknown
Cycle count	1
Designed capacity	42772 mWh
Full charged capacity	43377 mWh
Wear level	-1,4%

Hardware monitoring



PCMark 10 Express

6 171

Essentials

10 716

Apps Start-up score

15 948

Video Conferencing Score

8 469

Web Browsing Score

9 113

Productivity

9 709

Spreadsheets Score

12 633

Writing Score

7 463

Validation

ERROR

Run information

Result name

DESKTOP-2115U2C_2024-02-08 16:00:45.0

Result details

SystemInfo Version

5.30.850

UI Version

2.1.2506 64

Test Version

1.0

Date

February 8 2024

Duration

15 m 23 s

Id

acfd44be-9e3f-45fe-9072-89491272bf8f

Test settings

Default settings used

Yes

Additional output

Video Conferencing

Video Encoder, AMDh264Encoder

Video Conferencing

OpenCL, gfx90c

Spreadsheets

OpenCL, gfx90c

System details

General

Operating System	Windows 10 Pro 64-bit 10.0.19045
Motherboard	HP 8B5C
Memory	15682 MB DDR4 @1598 Mhz
BIOS	HP V78 Ver. 01.04.01
System Drive Model	
Resolution	1366 x 768 px
Power plan	Equilibrado

Processor

CPU	AMD Ryzen 5 7530U with Radeon Graphics
Clock Frequency	2000 MHz
Max Frequency	2000 MHz
Processors	12
Cores	12x 1 (1)
Package	

Graphic adapters

GPU	AMD Radeon (TM) Graphics
Manufacturer	AMD/ATI
Dedicated Video Memory	
Total Available Graphics Memory	7841 MB
Core Clock	2000 MHz
Boost Clock	
Memory Clock	1600 MHz
Driver Version	31.0.21018.9001
Display 1	\\.\DISPLAY1 (1366 x 768, 100% DPI scaling)

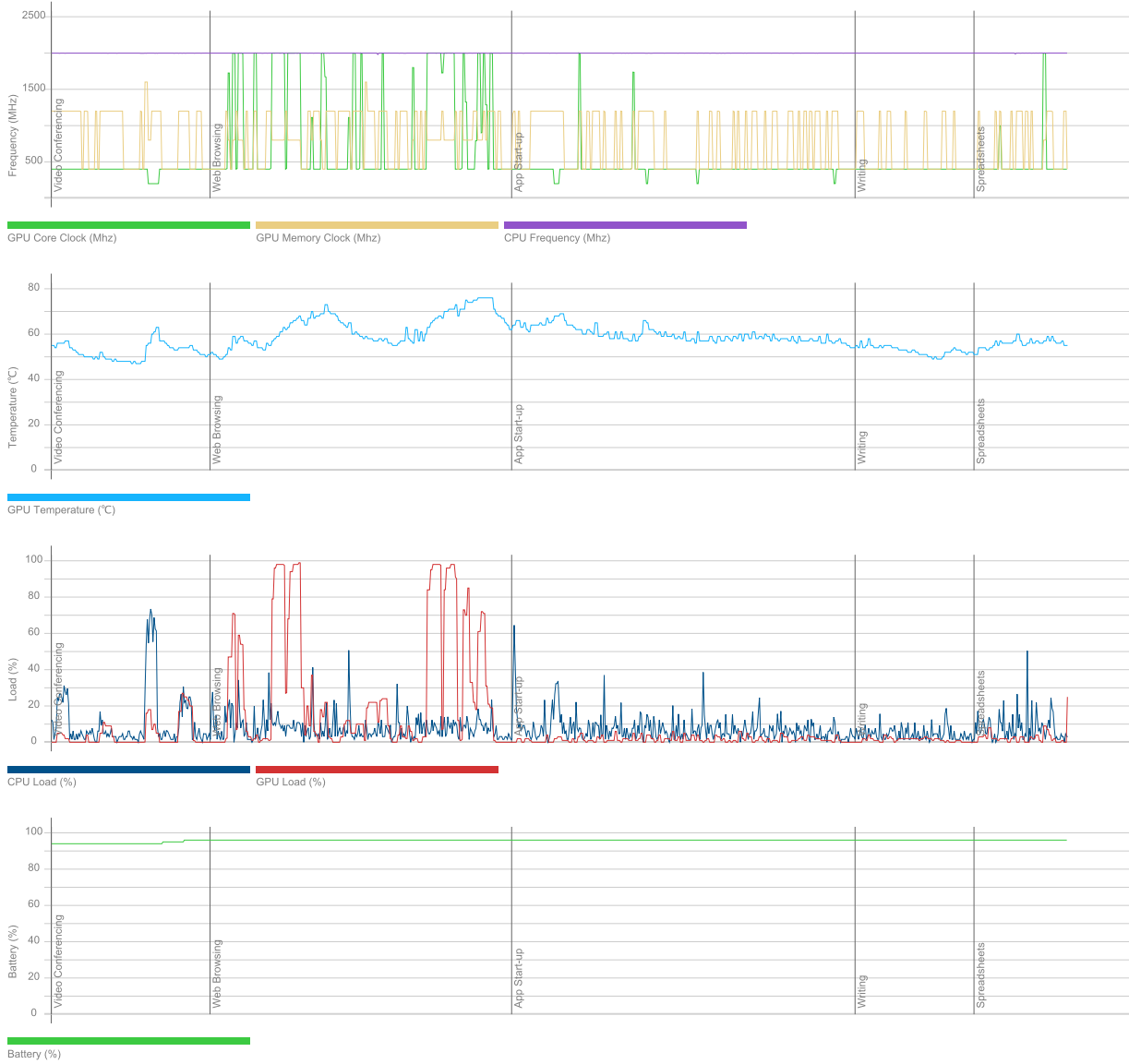
Storage devices

Drive 0	476 GB
Drive model	KBG50ZNV512G KIOXIA
Drive type	SSD
External drive	No (SCSI)
Partition 0	100 MB
Partition 1	C: (NTFS) 476 GB (423 GB free)
Partition 2	543 MB

Batteries

Battery	Primary
Manufacturer	Hewlett-Packard
Type	Unknown
Cycle count	1
Designed capacity	42772 mWh
Full charged capacity	43890 mWh
Wear level	-2,6%

Hardware monitoring



PCMark 10 Express

6 084

Essentials

10 624

Apps Start-up score

16 079

Video Conferencing Score

8 440

Web Browsing Score

8 837

Productivity

9 522

Spreadsheets Score

12 385

Writing Score

7 322

Validation

ERROR

Run information

Result name

DESKTOP-CHJUL7V_2024-02-08 16:00:31.0

Result details

SystemInfo Version

5.30.850

UI Version

2.1.2506 64

Test Version

1.0

Date

February 8 2024

Duration

15 m 27 s

Id

0961e6c9-6160-49af-93da-b63a7c4529ee

Test settings

Default settings used

Yes

Additional output

Video Conferencing

Video Encoder, AMDh264Encoder

Video Conferencing

OpenCL, gfx90c

Spreadsheets

OpenCL, gfx90c

System details

General

Operating System	Windows 10 Pro 64-bit 10.0.19045
Motherboard	HP 8B5C
Memory	15682 MB DDR4
BIOS	HP V78 Ver. 01.04.01
System Drive Model	
Resolution	1366 x 768 px
Power plan	Equilibrado

Processor

CPU	AMD Ryzen 5 7530U with Radeon Graphics
Clock Frequency	2000 MHz
Max Frequency	2011 MHz
Processors	12
Cores	12x 1 (1)
Package	

Graphic adapters

GPU	AMD Radeon (TM) Graphics
Manufacturer	AMD/ATI
Dedicated Video Memory	
Total Available Graphics Memory	7841 MB
Core Clock	2000 MHz
Boost Clock	
Memory Clock	1600 MHz
Driver Version	31.0.21018.9001
Display 1	\\.\DISPLAY1 (1366 x 768, 100% DPI scaling)

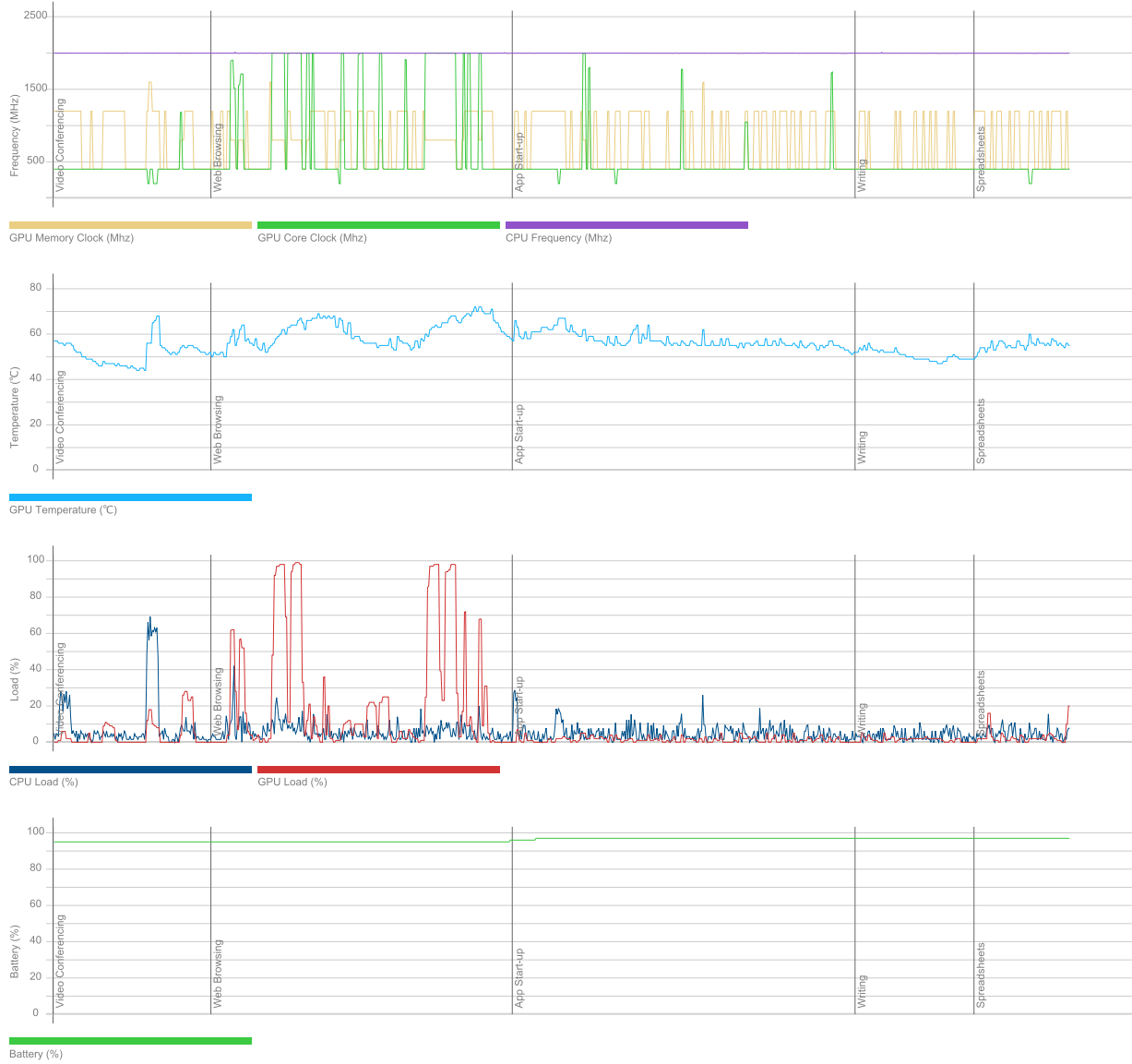
Storage devices

Drive 0	476 GB
Drive model	KBG50ZNV512G KIOXIA
Drive type	SSD
External drive	No (SCSI)
Partition 0	100 MB
Partition 1	C: (NTFS) 476 GB (423 GB free)
Partition 2	543 MB

Batteries

Battery	Primary
Manufacturer	Hewlett-Packard
Type	Unknown
Cycle count	1
Designed capacity	42772 mWh
Full charged capacity	43833 mWh
Wear level	-2,5%

Hardware monitoring



PCMark 10 Express

6 157

Essentials

10 714

Apps Start-up score

16 189

Video Conferencing Score

8 426

Web Browsing Score

9 018

Productivity

9 668

Spreadsheets Score

12 553

Writing Score

7 447

Validation

VALID

Run information

Result name

DESKTOP-CM4K8HD_2024-02-08 11:05:38.0

Result details

SystemInfo Version

5.30.850

UI Version

2.1.2506 64

Test Version

1.0

Date

February 8 2024

Duration

15 m 24 s

Id

a6a082ce-2117-49a1-bca7-d8d81ae69c29

Test settings

Default settings used

Yes

Additional output

Video Conferencing

Video Encoder, AMDh264Encoder

Video Conferencing

OpenCL, gfx90c

Spreadsheets

OpenCL, gfx90c

System details

General

Operating System	Windows 10 Pro 64-bit 10.0.19045
Motherboard	HP 8B5C
Memory	15682 MB DDR4 @1598 Mhz
BIOS	HP V78 Ver. 01.04.01
System Drive Model	
Resolution	1366 x 768 px
Power plan	Equilibrado

Processor

CPU	AMD Ryzen 5 7530U with Radeon Graphics
Clock Frequency	2000 MHz
Max Frequency	2010 MHz
Processors	12
Cores	12x 1 (1)
Package	

Graphic adapters

GPU	AMD Radeon (TM) Graphics
Manufacturer	AMD/ATI
Dedicated Video Memory	
Total Available Graphics Memory	7841 MB
Core Clock	2000 MHz
Boost Clock	
Memory Clock	1600 MHz
Driver Version	31.0.21018.9001
Display 1	\\.\DISPLAY1 (1366 x 768, 100% DPI scaling)

Storage devices

Drive 0	476 GB
Drive model	KBG50ZNV512G KIOXIA
Drive type	SSD
External drive	No (SCSI)
Partition 0	100 MB
Partition 1	C: (NTFS) 476 GB (421 GB free)
Partition 2	543 MB

Batteries

Battery	Primary
Manufacturer	Hewlett-Packard
Type	Unknown
Cycle count	1
Designed capacity	42772 mWh
Full charged capacity	43764 mWh
Wear level	-2,3%

Hardware monitoring



PCMark 10 Express

6 105

Essentials

10 582

Apps Start-up score

15 656

Video Conferencing Score

8 425

Web Browsing Score

8 985

Productivity

9 625

Spreadsheets Score

12 472

Writing Score

7 429

Validation

VALID

Run information

Result name

DESKTOP-E18QN3V_2024-02-08 12:13:57.0

Result details

SystemInfo Version

5.30.850

UI Version

2.1.2506 64

Test Version

1.0

Date

February 8 2024

Duration

15 m 27 s

Id

3bb184dc-34e6-46fe-9226-47fadbbba1943

Test settings

Default settings used

Yes

Additional output

Video Conferencing

Video Encoder, AMDh264Encoder

Video Conferencing

OpenCL, gfx90c

Spreadsheets

OpenCL, gfx90c

System details

General

Operating System	Windows 10 Pro 64-bit 10.0.19045
Motherboard	HP 8B5C
Memory	15682 MB DDR4 @1598 Mhz
BIOS	HP V78 Ver. 01.04.01
System Drive Model	
Resolution	1366 x 768 px
Power plan	Equilibrado

Processor

CPU	AMD Ryzen 5 7530U with Radeon Graphics
Clock Frequency	2000 MHz
Max Frequency	2019 MHz
Processors	12
Cores	12x 1 (1)
Package	

Graphic adapters

GPU	AMD Radeon (TM) Graphics
Manufacturer	AMD/ATI
Dedicated Video Memory	
Total Available Graphics Memory	7841 MB
Core Clock	2000 MHz
Boost Clock	
Memory Clock	1600 MHz
Driver Version	31.0.21018.9001
Display 1	\\.\DISPLAY1 (1366 x 768, 100% DPI scaling)

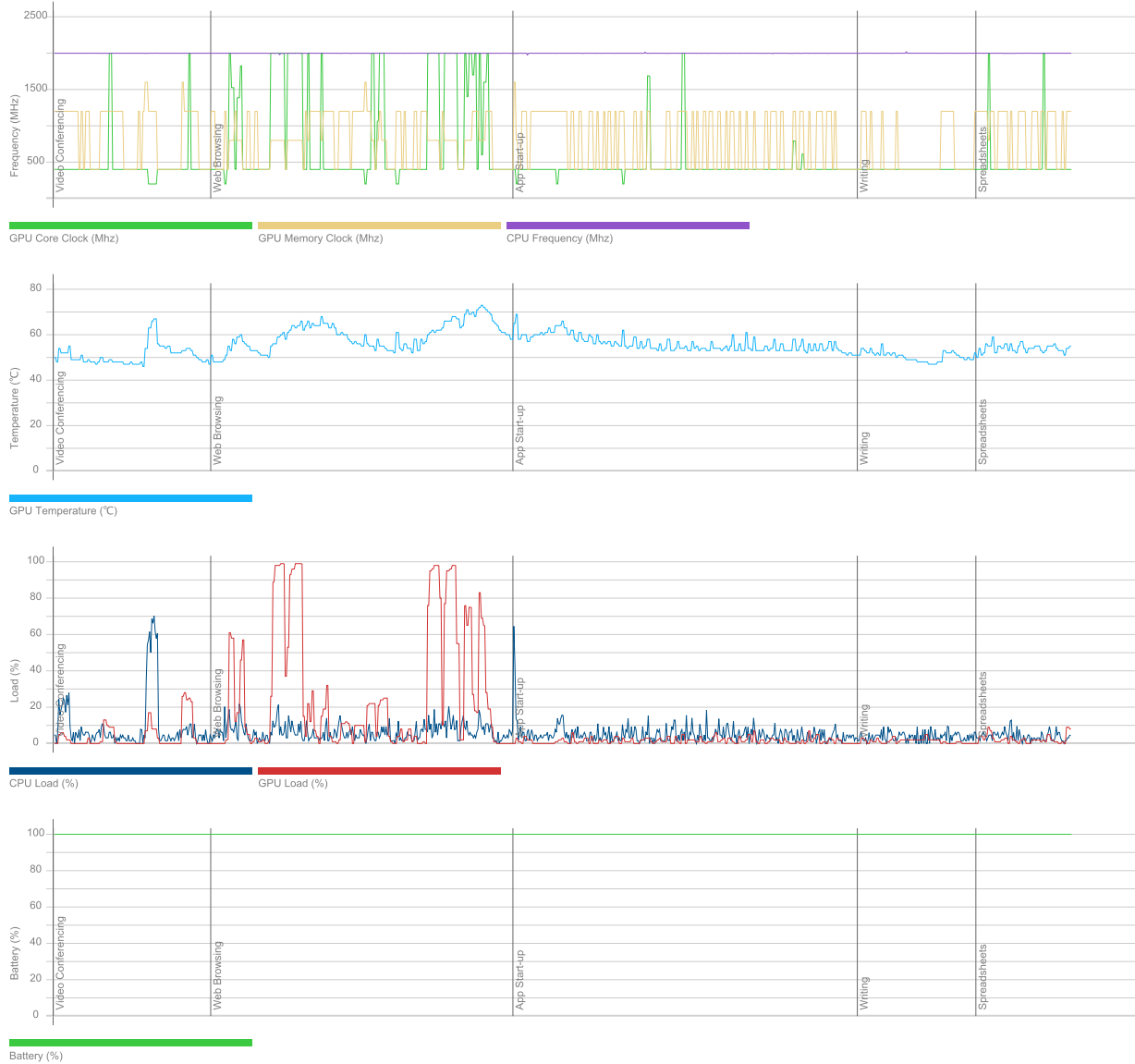
Storage devices

Drive 0	476 GB
Drive model	KBG50ZNV512G KIOXIA
Drive type	SSD
External drive	No (SCSI)
Partition 0	100 MB
Partition 1	C: (NTFS) 476 GB (423 GB free)
Partition 2	543 MB

Batteries

Battery	Primary
Manufacturer	Hewlett-Packard
Type	Unknown
Cycle count	1
Designed capacity	42772 mWh
Full charged capacity	43445 mWh
Wear level	-1,6%

Hardware monitoring



PCMark 10 Express

6 115

Essentials

10 712

Apps Start-up score

16 272

Video Conferencing Score

8 438

Web Browsing Score

8 954

Productivity

9 541

Spreadsheets Score

12 399

Writing Score

7 342

Validation

VALID

Run information

Result name

DESKTOP-EPECOA6_2024-02-08 11:00:17.0

Result details

SystemInfo Version

5.30.850

UI Version

2.1.2506 64

Test Version

1.0

Date

February 8 2024

Duration

15 m 26 s

Id

8d0b31bf-f52b-4b26-8882-96a390bbdfe5

Test settings

Default settings used

Yes

Additional output

Video Conferencing

Video Encoder, AMDh264Encoder

Video Conferencing

OpenCL, gfx90c

Spreadsheets

OpenCL, gfx90c

System details

General

Operating System	Windows 10 Pro 64-bit 10.0.19045
Motherboard	HP 8B5C
Memory	15682 MB DDR4 @1598 Mhz
BIOS	HP V78 Ver. 01.04.01
System Drive Model	
Resolution	1366 x 768 px
Power plan	Equilibrado

Processor

CPU	AMD Ryzen 5 7530U with Radeon Graphics
Clock Frequency	2000 MHz
Max Frequency	2015 MHz
Processors	12
Cores	12x 1 (1)
Package	

Graphic adapters

GPU	AMD Radeon (TM) Graphics
Manufacturer	AMD/ATI
Dedicated Video Memory	
Total Available Graphics Memory	7841 MB
Core Clock	2000 MHz
Boost Clock	
Memory Clock	1600 MHz
Driver Version	31.0.21018.9001
Display 1	\\.\DISPLAY1 (1366 x 768, 100% DPI scaling)

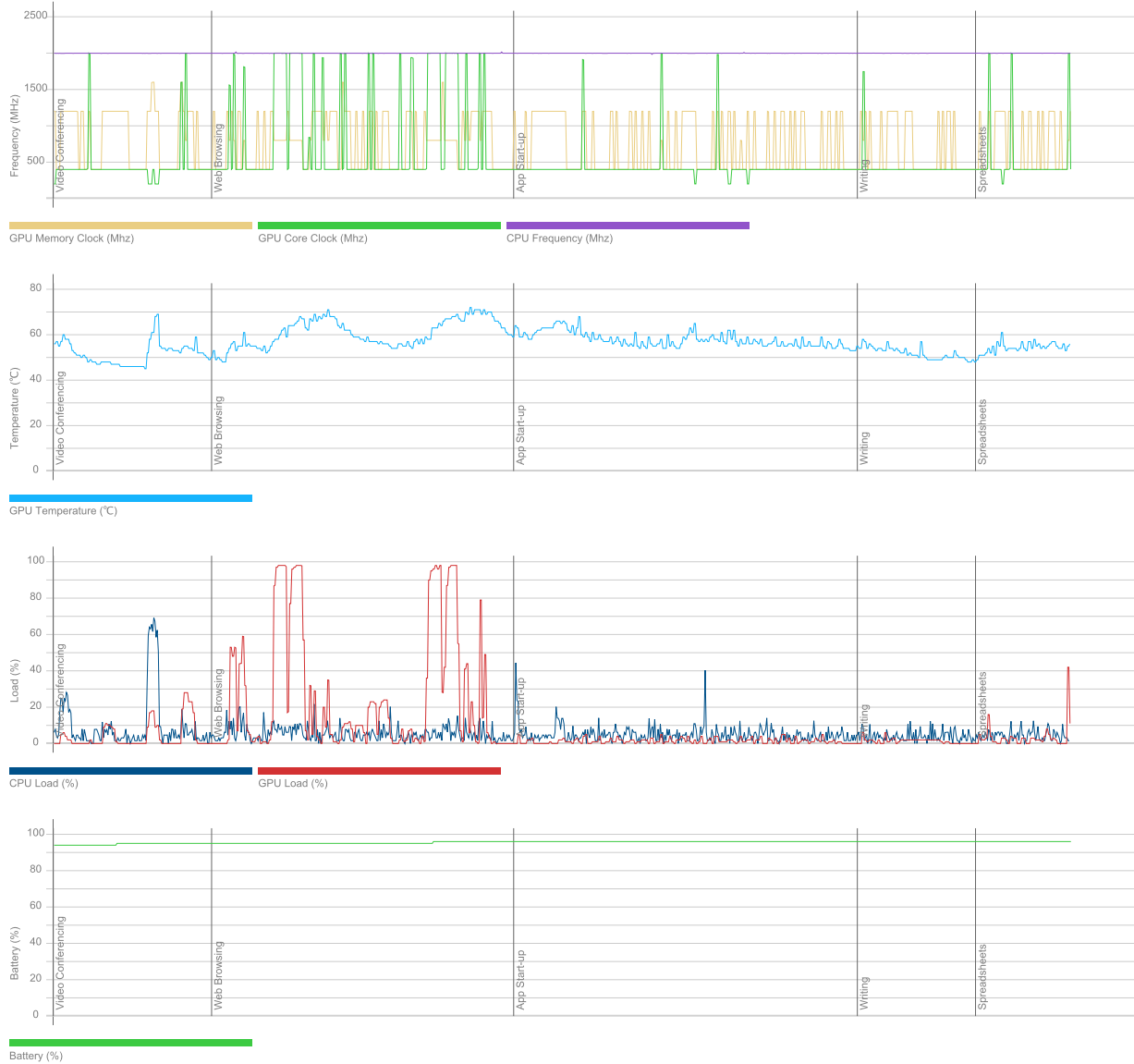
Storage devices

Drive 0	476 GB
Drive model	KBG50ZNV512G KIOXIA
Drive type	SSD
External drive	No (SCSI)
Partition 0	100 MB
Partition 1	C: (NTFS) 476 GB (422 GB free)
Partition 2	543 MB

Batteries

Battery	Primary
Manufacturer	Hewlett-Packard
Type	Unknown
Cycle count	2
Designed capacity	42772 mWh
Full charged capacity	43274 mWh
Wear level	-1,2%

Hardware monitoring



PCMark 10 Express

6 152

Essentials

10 832

Apps Start-up score

16 671

Video Conferencing Score

8 429

Web Browsing Score

9 045

Productivity

9 548

Spreadsheets Score

12 262

Writing Score

7 435

Validation

VALID

Run information

Result name

DESKTOP-FA1U6UN_2024-02-08 10:58:53.0

Result details

SystemInfo Version

5.30.850

UI Version

2.1.2506 64

Test Version

1.0

Date

February 8 2024

Duration

15 m 24 s

Id

4c9169d8-3a01-4a6b-bc05-058ef15aa73e

Test settings

Default settings used

Yes

Additional output

Video Conferencing

Video Encoder, AMDh264Encoder

Video Conferencing

OpenCL, gfx90c

Spreadsheets

OpenCL, gfx90c

System details

General

Operating System	Windows 10 Pro 64-bit 10.0.19045
Motherboard	HP 8B5C
Memory	15682 MB DDR4 @1598 Mhz
BIOS	HP V78 Ver. 01.04.01
System Drive Model	
Resolution	1366 x 768 px
Power plan	Equilibrado

Processor

CPU	AMD Ryzen 5 7530U with Radeon Graphics
Clock Frequency	2000 MHz
Max Frequency	1999 MHz
Processors	12
Cores	12x 1 (1)
Package	

Graphic adapters

GPU	AMD Radeon (TM) Graphics
Manufacturer	AMD/ATI
Dedicated Video Memory	
Total Available Graphics Memory	7841 MB
Core Clock	2000 MHz
Boost Clock	
Memory Clock	1600 MHz
Driver Version	31.0.21018.9001
Display 1	\\.\DISPLAY1 (1366 x 768, 100% DPI scaling)

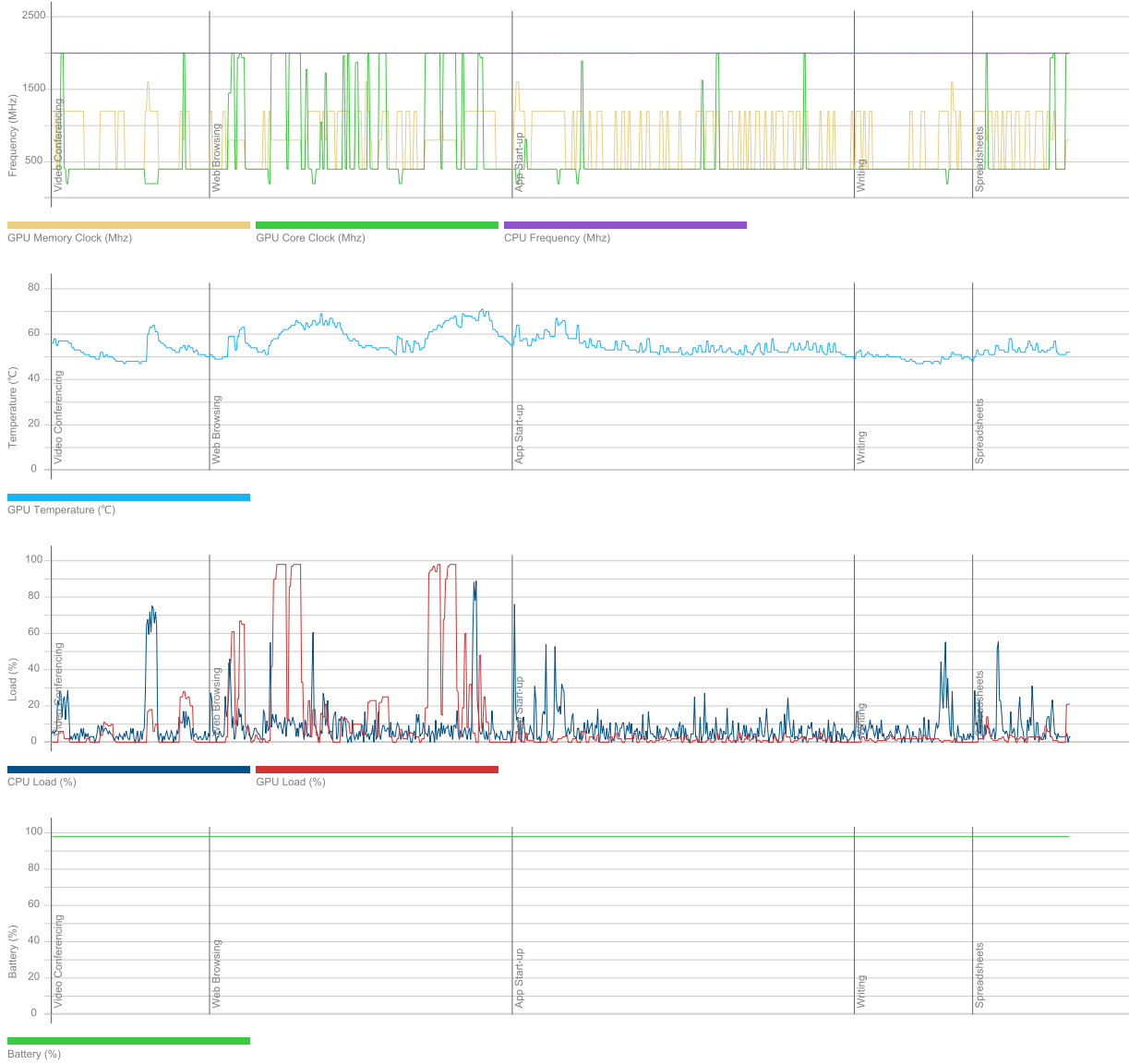
Storage devices

Drive 0	476 GB
Drive model	KBG50ZNV512G KIOXIA
Drive type	SSD
External drive	No (SCSI)
Partition 0	100 MB
Partition 1	C: (NTFS) 476 GB (422 GB free)
Partition 2	543 MB

Batteries

Battery	Primary
Manufacturer	Hewlett-Packard
Type	Unknown
Cycle count	1
Designed capacity	42772 mWh
Full charged capacity	43764 mWh
Wear level	-2,3%

Hardware monitoring



PCMark 10 Express

6 255

Essentials

10 954

Apps Start-up score

17 018

Video Conferencing Score

8 468

Web Browsing Score

9 121

Productivity

9 760

Spreadsheets Score

12 766

Writing Score

7 463

Validation

ERROR

Run information

Result name

DESKTOP-FC0NG38_2024-02-08 12:14:05.0

Result details

SystemInfo Version

5.30.850

UI Version

2.1.2506 64

Test Version

1.0

Date

February 8 2024

Duration

15 m 20 s

Id

c77df8bb-ea64-4501-8284-d75a66f9e4d8

Test settings

Default settings used

Yes

Additional output

Video Conferencing

Video Encoder, AMDh264Encoder

Video Conferencing

OpenCL, gfx90c

Spreadsheets

OpenCL, gfx90c

System details

General

Operating System	Windows 10 Pro 64-bit 10.0.19045
Motherboard	HP 8B5C
Memory	15682 MB DDR4 @1598 Mhz
BIOS	HP V78 Ver. 01.04.01
System Drive Model	
Resolution	1366 x 768 px
Power plan	Equilibrado

Processor

CPU	AMD Ryzen 5 7530U with Radeon Graphics
Clock Frequency	2000 MHz
Max Frequency	2018 MHz
Processors	12
Cores	12x 1 (1)
Package	

Graphic adapters

GPU	AMD Radeon (TM) Graphics
Manufacturer	AMD/ATI
Dedicated Video Memory	
Total Available Graphics Memory	7841 MB
Core Clock	2000 MHz
Boost Clock	
Memory Clock	1600 MHz
Driver Version	31.0.21018.9001
Display 1	\\.\DISPLAY1 (1366 x 768, 100% DPI scaling)

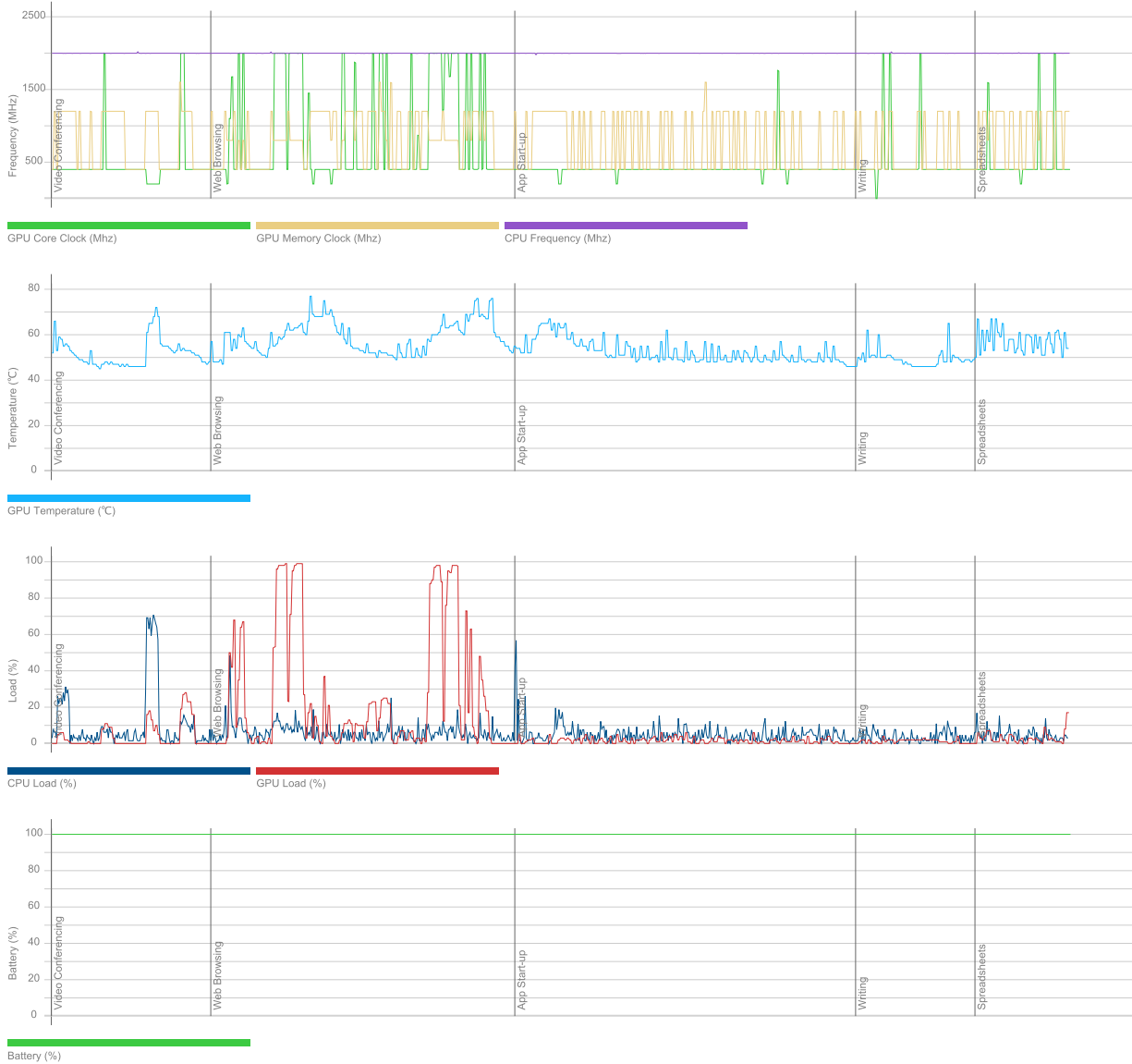
Storage devices

Drive 0	476 GB
Drive model	KBG50ZNV512G KIOXIA
Drive type	SSD
External drive	No (SCSI)
Partition 0	100 MB
Partition 1	C: (NTFS) 476 GB (422 GB free)
Partition 2	543 MB

Batteries

Battery	Primary
Manufacturer	Hewlett-Packard
Type	Unknown
Cycle count	1
Designed capacity	42772 mWh
Full charged capacity	43764 mWh
Wear level	-2,3%

Hardware monitoring



PCMark 10 Express

6 163

Essentials

10 767

Apps Start-up score

16 473

Video Conferencing Score

8 440

Web Browsing Score

8 979

Productivity

9 640

Spreadsheets Score

12 487

Writing Score

7 443

Validation

Result online validation is disabled

Run information

Result name

DESKTOP-GR23JVB_2024-02-08 10:59:31.0

Result details

SystemInfo Version

5.30.850

UI Version

2.1.2506 64

Test Version

1.0

Date

February 8 2024

Duration

15 m 3 s

Id

20acd1cf-197d-434d-95c4-13006da3c357

Test settings

Default settings used

Yes

Additional output

Video Conferencing

Video Encoder, AMDh264Encoder

Video Conferencing

OpenCL, gfx90c

Spreadsheets

OpenCL, gfx90c

System details

General

Operating System	Windows 10 Pro 64-bit 10.0.19045
Motherboard	HP 8B5C
Memory	15682 MB DDR4 @1598 Mhz
BIOS	HP V78 Ver. 01.04.01
System Drive Model	
Resolution	1366 x 768 px
Power plan	Equilibrado

Processor

CPU	AMD Ryzen 5 7530U with Radeon Graphics
Clock Frequency	2000 MHz
Max Frequency	2009 MHz
Processors	12
Cores	12x 1 (1)
Package	

Graphic adapters

GPU	AMD Radeon (TM) Graphics
Manufacturer	AMD/ATI
Dedicated Video Memory	
Total Available Graphics Memory	7841 MB
Core Clock	2000 MHz
Boost Clock	
Memory Clock	1600 MHz
Driver Version	31.0.21018.9001
Display 1	\\.\DISPLAY1 (1366 x 768, 100% DPI scaling)

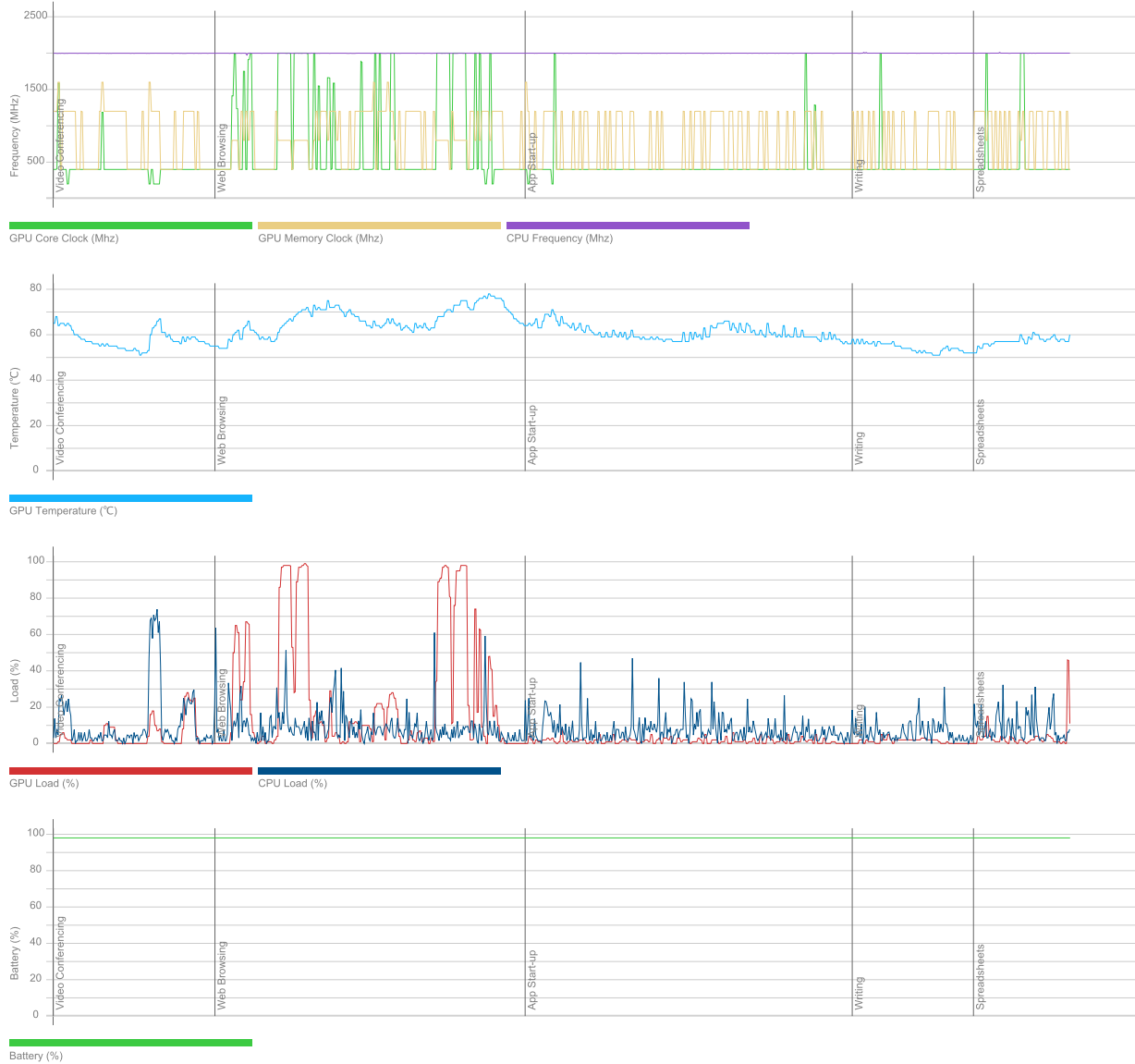
Storage devices

Drive 0	476 GB
Drive model	KBG50ZNV512G KIOXIA
Drive type	SSD
External drive	No (SCSI)
Partition 0	100 MB
Partition 1	C: (NTFS) 476 GB (422 GB free)
Partition 2	543 MB

Batteries

Battery	Primary
Manufacturer	Hewlett-Packard
Type	Unknown
Cycle count	1
Designed capacity	42772 mWh
Full charged capacity	43764 mWh
Wear level	-2,3%

Hardware monitoring



PCMark 10 Express

6 082

Essentials

10 580

Apps Start-up score

15 966

Video Conferencing Score

8 416

Web Browsing Score

8 816

Productivity

9 554

Spreadsheets Score

12 408

Writing Score

7 357

Validation

ERROR

Run information

Result name

DESKTOP-H7347TI_2024-02-08 15:59:40.0

Result details

SystemInfo Version

5.30.850

UI Version

2.1.2506 64

Test Version

1.0

Date

February 8 2024

Duration

15 m 27 s

Id

ef3b213b-5d27-4fd7-a889-a44c1aa8f31a

Test settings

Default settings used

Yes

Additional output

Video Conferencing

Video Encoder, AMDh264Encoder

Video Conferencing

OpenCL, gfx90c

Spreadsheets

OpenCL, gfx90c

System details

General

Operating System	Windows 10 Pro 64-bit 10.0.19045
Motherboard	HP 8B5C
Memory	15682 MB DDR4 @1598 Mhz
BIOS	HP V78 Ver. 01.04.01
System Drive Model	
Resolution	1366 x 768 px
Power plan	Equilibrado

Processor

CPU	AMD Ryzen 5 7530U with Radeon Graphics
Clock Frequency	2000 MHz
Max Frequency	2016 MHz
Processors	12
Cores	12x 1 (1)
Package	

Graphic adapters

GPU	AMD Radeon (TM) Graphics
Manufacturer	AMD/ATI
Dedicated Video Memory	
Total Available Graphics Memory	7841 MB
Core Clock	2000 MHz
Boost Clock	
Memory Clock	1600 MHz
Driver Version	31.0.21018.9001
Display 1	\\.\DISPLAY1 (1366 x 768, 100% DPI scaling)

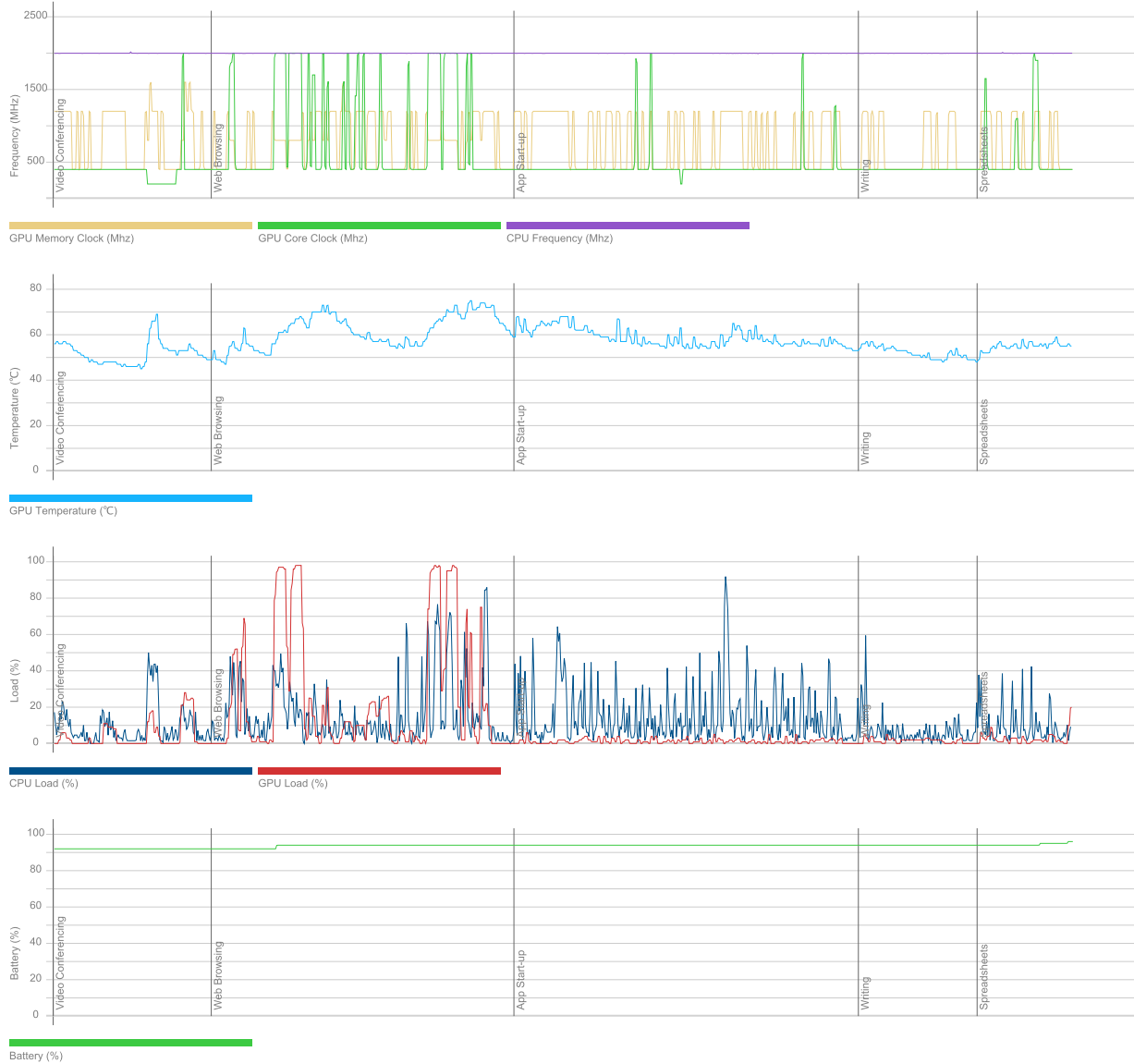
Storage devices

Drive 0	476 GB
Drive model	KBG50ZNV512G KIOXIA
Drive type	SSD
External drive	No (SCSI)
Partition 0	100 MB
Partition 1	C: (NTFS) 476 GB (423 GB free)
Partition 2	543 MB

Batteries

Battery	Primary
Manufacturer	Hewlett-Packard
Type	Unknown
Cycle count	1
Designed capacity	42772 mWh
Full charged capacity	43764 mWh
Wear level	-2,3%

Hardware monitoring



PCMark 10 Express

6 164

Essentials

10 756

Apps Start-up score

16 158

Video Conferencing Score

8 451

Web Browsing Score

9 113

Productivity

9 655

Spreadsheets Score

12 564

Writing Score

7 421

Validation

ERROR

Run information

Result name

DESKTOP-LC6SHD3_2024-02-08 15:59:49.0

Result details

SystemInfo Version

5.30.850

UI Version

2.1.2506 64

Test Version

1.0

Date

February 8 2024

Duration

15 m 23 s

Id

6bbe99bf-19f0-4600-8992-964a2b229e6d

Test settings

Default settings used

Yes

Additional output

Video Conferencing

Video Encoder, AMDh264Encoder

Video Conferencing

OpenCL, gfx90c

Spreadsheets

OpenCL, gfx90c

System details

General

Operating System	Windows 10 Pro 64-bit 10.0.19045
Motherboard	HP 8B5C
Memory	15682 MB DDR4 @1596 Mhz
BIOS	HP V78 Ver. 01.04.01
System Drive Model	
Resolution	1366 x 768 px
Power plan	Equilibrado

Processor

CPU	AMD Ryzen 5 7530U with Radeon Graphics
Clock Frequency	2000 MHz
Max Frequency	2011 MHz
Processors	12
Cores	12x 1 (1)
Package	

Graphic adapters

GPU	AMD Radeon (TM) Graphics
Manufacturer	AMD/ATI
Dedicated Video Memory	
Total Available Graphics Memory	7841 MB
Core Clock	2000 MHz
Boost Clock	
Memory Clock	1600 MHz
Driver Version	31.0.21018.9001
Display 1	\\.\DISPLAY1 (1366 x 768, 100% DPI scaling)

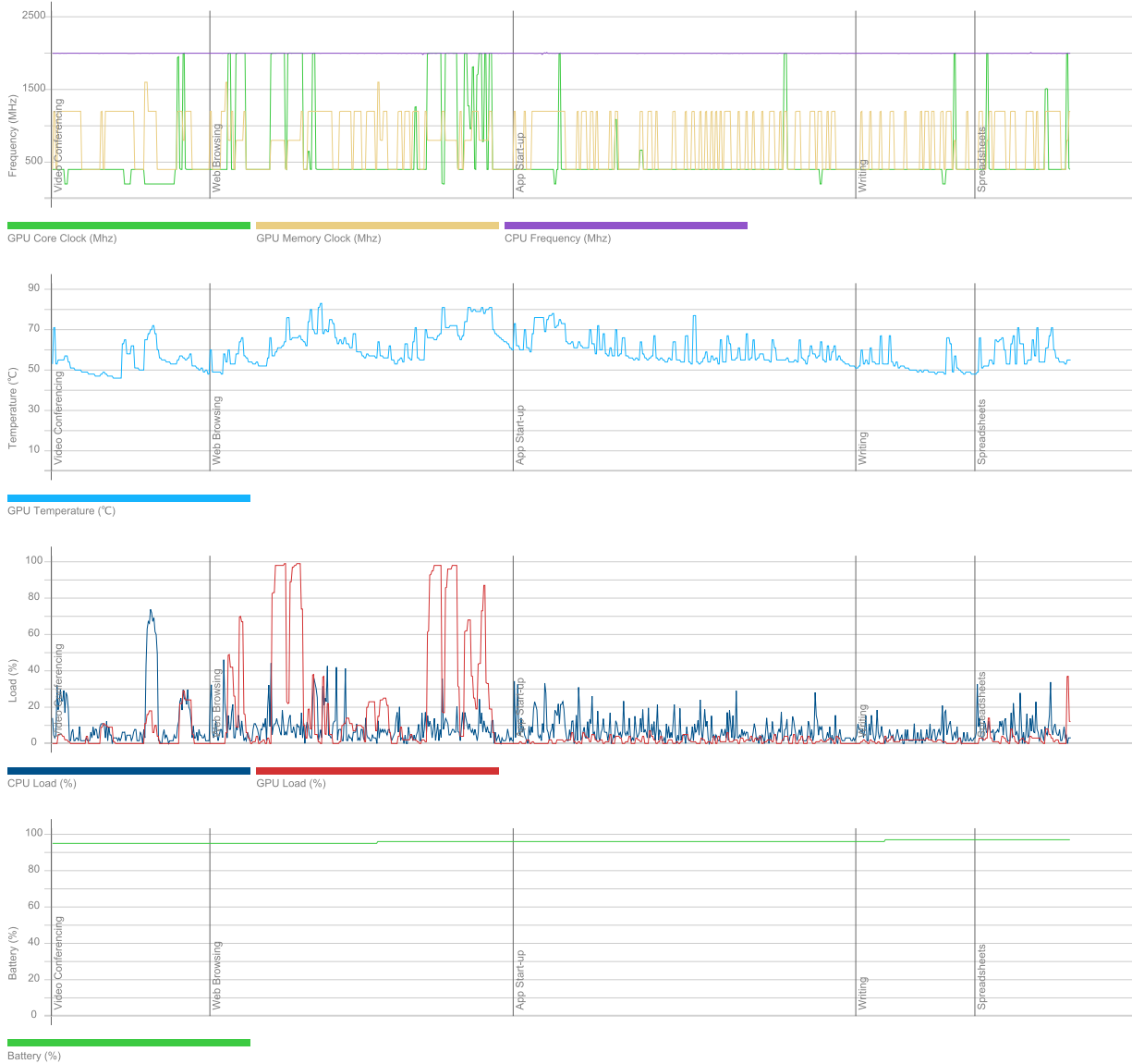
Storage devices

Drive 0	476 GB
Drive model	KBG50ZNV512G KIOXIA
Drive type	SSD
External drive	No (SCSI)
Partition 0	100 MB
Partition 1	C: (NTFS) 476 GB (423 GB free)
Partition 2	543 MB

Batteries

Battery	Primary
Manufacturer	Hewlett-Packard
Type	Unknown
Cycle count	1
Designed capacity	42772 mWh
Full charged capacity	43764 mWh
Wear level	-2,3%

Hardware monitoring



PCMark 10 Express

6 135

Essentials

10 623

Apps Start-up score

15 779

Video Conferencing Score

8 429

Web Browsing Score

9 014

Productivity

9 683

Spreadsheets Score

12 601

Writing Score

7 441

Validation

VALID

Run information

Result name

DESKTOP-LHHKM5H_2024-02-08 11:02:02.0

Result details

SystemInfo Version

5.30.850

UI Version

2.1.2506 64

Test Version

1.0

Date

February 8 2024

Duration

15 m 24 s

Id

3f373457-dd14-4eab-98b5-9a5a4802b159

Test settings

Default settings used

Yes

Additional output

Video Conferencing

Video Encoder, AMDh264Encoder

Video Conferencing

OpenCL, gfx90c

Spreadsheets

OpenCL, gfx90c

System details

General

Operating System	Windows 10 Pro 64-bit 10.0.19045
Motherboard	HP 8B5C
Memory	15682 MB DDR4 @1598 Mhz
BIOS	HP V78 Ver. 01.04.01
System Drive Model	
Resolution	1366 x 768 px
Power plan	Equilibrado

Processor

CPU	AMD Ryzen 5 7530U with Radeon Graphics
Clock Frequency	2000 MHz
Max Frequency	1999 MHz
Processors	12
Cores	12x 1 (1)
Package	

Graphic adapters

GPU	AMD Radeon (TM) Graphics
Manufacturer	AMD/ATI
Dedicated Video Memory	
Total Available Graphics Memory	7841 MB
Core Clock	2000 MHz
Boost Clock	
Memory Clock	1600 MHz
Driver Version	31.0.21018.9001
Display 1	\\.\DISPLAY1 (1366 x 768, 100% DPI scaling)

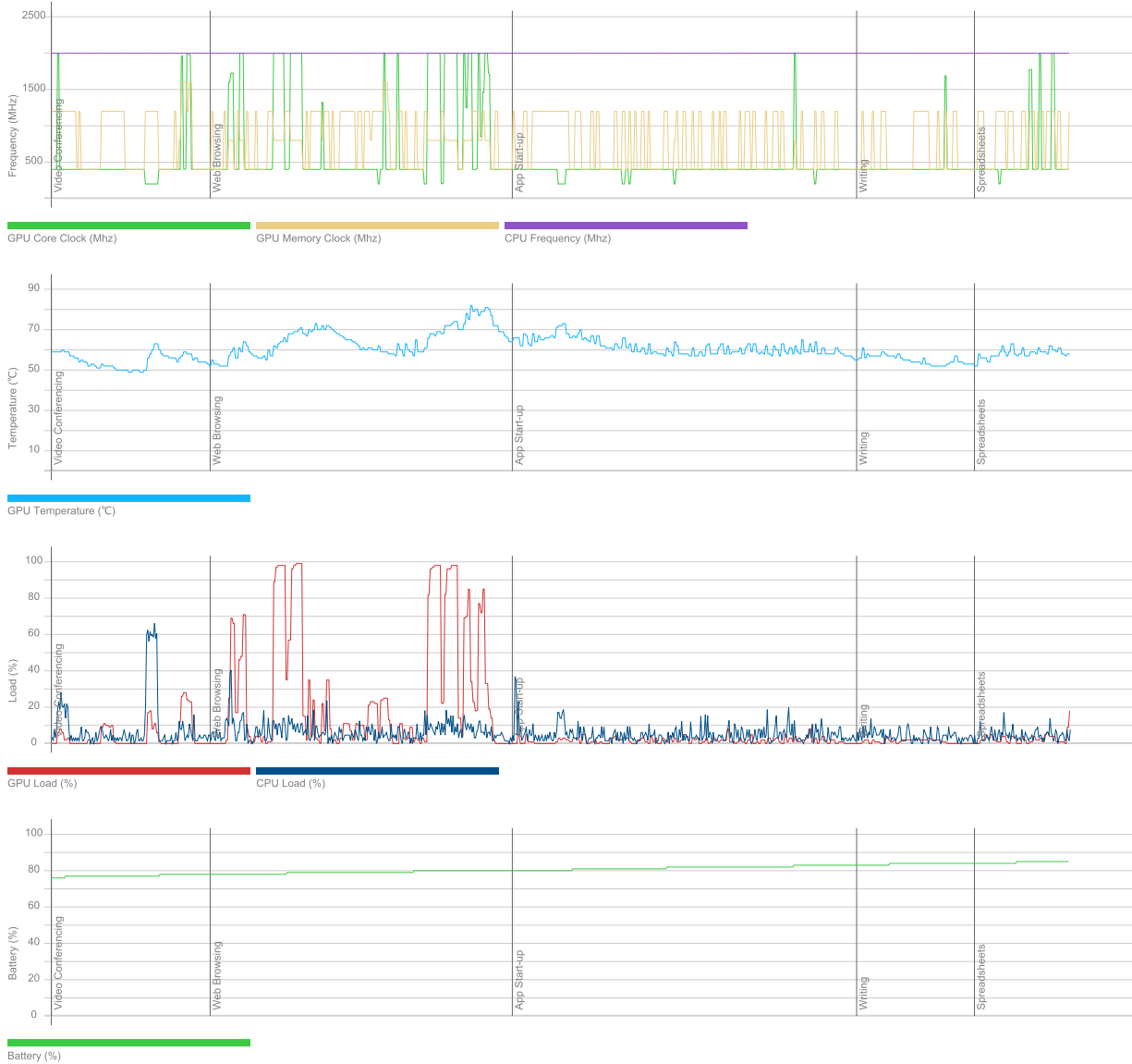
Storage devices

Drive 0	476 GB
Drive model	KBG50ZNV512G KIOXIA
Drive type	SSD
External drive	No (SCSI)
Partition 0	100 MB
Partition 1	C: (NTFS) 476 GB (422 GB free)
Partition 2	543 MB

Batteries

Battery	Primary
Manufacturer	Hewlett-Packard
Type	Unknown
Cycle count	1
Designed capacity	42772 mWh
Full charged capacity	43764 mWh
Wear level	-2,3%

Hardware monitoring



PCMark 10 Express

6 127

Essentials

10 718

Apps Start-up score

16 288

Video Conferencing Score

8 439

Web Browsing Score

8 959

Productivity

9 572

Spreadsheets Score

12 475

Writing Score

7 345

Validation

VALID

Run information

Result name

DESKTOP-LPOP0TK_2024-02-08 11:02:04.0

Result details

SystemInfo Version

5.30.850

UI Version

2.1.2506 64

Test Version

1.0

Date

February 8 2024

Duration

15 m 26 s

Id

7d5c0d85-1a71-486b-b03a-42ed593f27c1

Test settings

Default settings used

Yes

Additional output

Video Conferencing

Video Encoder, AMDh264Encoder

Video Conferencing

OpenCL, gfx90c

Spreadsheets

OpenCL, gfx90c

System details

General

Operating System	Windows 10 Pro 64-bit 10.0.19045
Motherboard	HP 8B5C
Memory	15682 MB DDR4 @1598 Mhz
BIOS	HP V78 Ver. 01.04.01
System Drive Model	
Resolution	1366 x 768 px
Power plan	Equilibrado

Processor

CPU	AMD Ryzen 5 7530U with Radeon Graphics
Clock Frequency	2000 MHz
Max Frequency	2005 MHz
Processors	12
Cores	12x 1 (1)
Package	

Graphic adapters

GPU	AMD Radeon (TM) Graphics
Manufacturer	AMD/ATI
Dedicated Video Memory	
Total Available Graphics Memory	7841 MB
Core Clock	2000 MHz
Boost Clock	
Memory Clock	1600 MHz
Driver Version	31.0.21018.9001
Display 1	\\.\DISPLAY1 (1366 x 768, 100% DPI scaling)

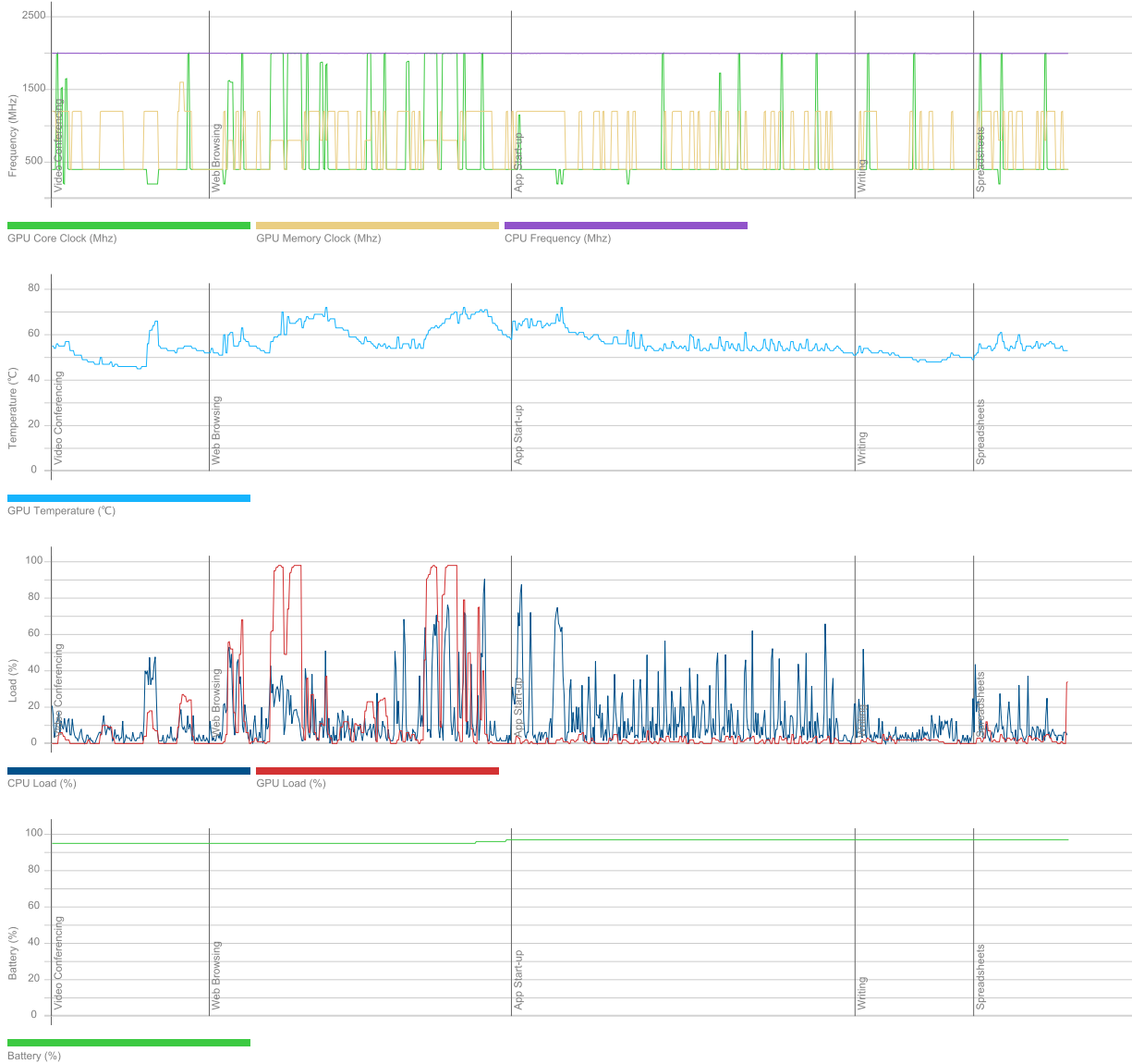
Storage devices

Drive 0	476 GB
Drive model	KBG50ZNV512G KIOXIA
Drive type	SSD
External drive	No (SCSI)
Partition 0	100 MB
Partition 1	C: (NTFS) 476 GB (422 GB free)
Partition 2	543 MB

Batteries

Battery	Primary
Manufacturer	Hewlett-Packard
Type	Unknown
Cycle count	1
Designed capacity	42772 mWh
Full charged capacity	43764 mWh
Wear level	-2,3%

Hardware monitoring



PCMark 10 Express

6 050

Essentials

10 508

Apps Start-up score

15 458

Video Conferencing Score

8 333

Web Browsing Score

9 009

Productivity

9 518

Spreadsheets Score

12 395

Writing Score

7 309

Validation

VALID

Run information

Result name

DESKTOP-P99DJE8_2024-02-08 11:05:41.0

Result details

SystemInfo Version

5.30.850

UI Version

2.1.2506 64

Test Version

1.0

Date

February 8 2024

Duration

15 m 29 s

Id

59a6c41e-ff30-40d1-ad70-442dbeb64306

Test settings

Default settings used

Yes

Additional output

Video Conferencing

Video Encoder, AMDh264Encoder

Video Conferencing

OpenCL, gfx90c

Spreadsheets

OpenCL, gfx90c

System details

General

Operating System	Windows 10 Pro 64-bit 10.0.19045
Motherboard	HP 8B5C
Memory	15682 MB DDR4 @1598 Mhz
BIOS	HP V78 Ver. 01.04.01
System Drive Model	
Resolution	1366 x 768 px
Power plan	Equilibrado

Processor

CPU	AMD Ryzen 5 7530U with Radeon Graphics
Clock Frequency	2000 MHz
Max Frequency	2013 MHz
Processors	12
Cores	12x 1 (1)
Package	

Graphic adapters

GPU	AMD Radeon (TM) Graphics
Manufacturer	AMD/ATI
Dedicated Video Memory	
Total Available Graphics Memory	7841 MB
Core Clock	2000 MHz
Boost Clock	
Memory Clock	1600 MHz
Driver Version	31.0.21018.9001
Display 1	\\.\DISPLAY1 (1366 x 768, 100% DPI scaling)

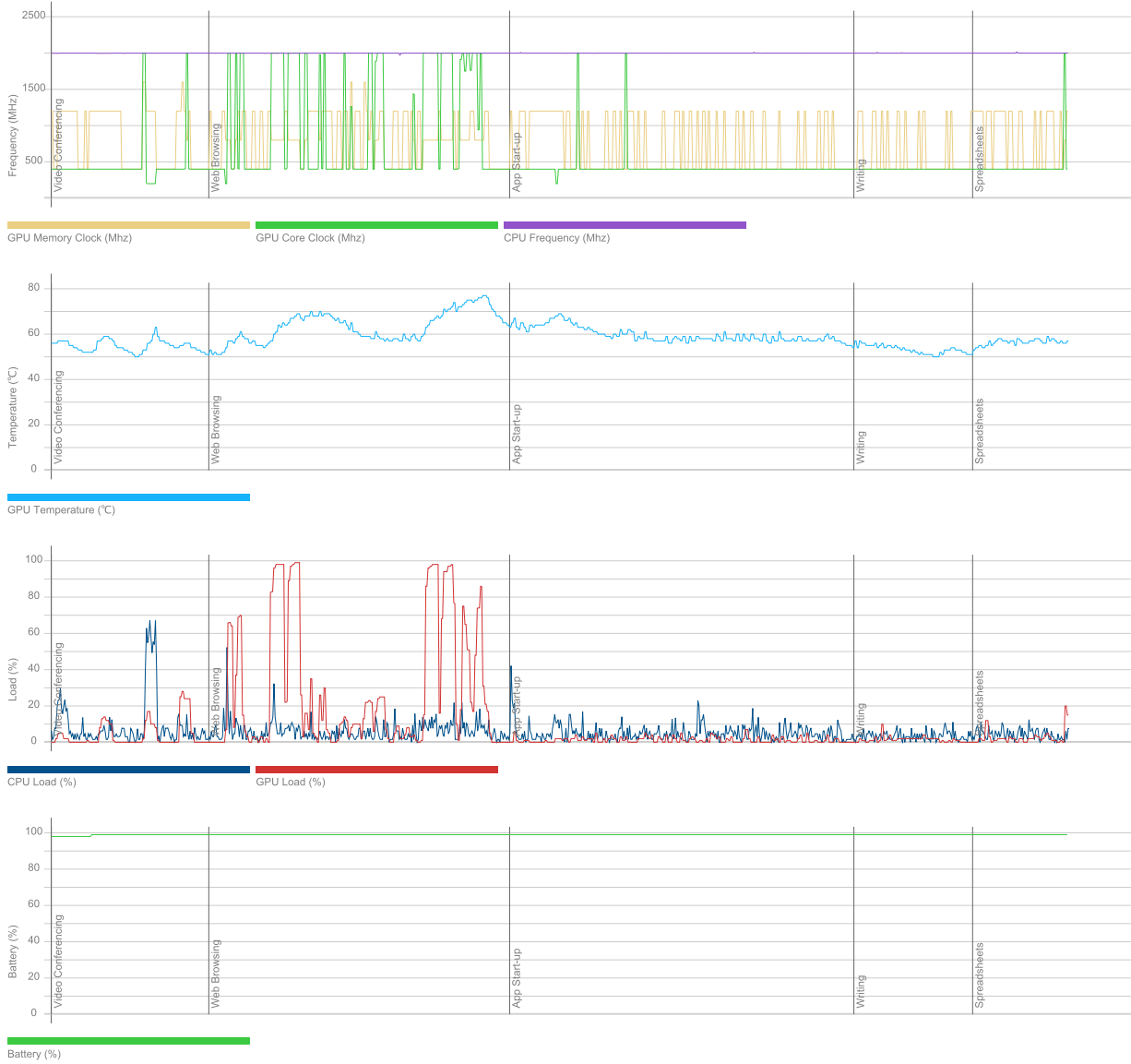
Storage devices

Drive 0	476 GB
Drive model	KBG50ZNV512G KIOXIA
Drive type	SSD
External drive	No (SCSI)
Partition 0	100 MB
Partition 1	C: (NTFS) 476 GB (421 GB free)
Partition 2	543 MB

Batteries

Battery	Primary
Manufacturer	Hewlett-Packard
Type	Unknown
Cycle count	1
Designed capacity	42772 mWh
Full charged capacity	43320 mWh
Wear level	-1,3%

Hardware monitoring



PCMark 10 Express

6 187

Essentials

10 831

Apps Start-up score

16 589

Video Conferencing Score

8 433

Web Browsing Score

9 083

Productivity

9 659

Spreadsheets Score

12 476

Writing Score

7 479

Validation

ERROR

Run information

Result name

DESKTOP-PM15AJ4_2024-02-08 16:06:55.0

Result details

SystemInfo Version

5.30.850

UI Version

2.1.2506 64

Test Version

1.0

Date

February 8 2024

Duration

15 m 23 s

Id

03a54836-c430-4f3f-b3c4-1b8fba8e8233

Test settings

Default settings used

Yes

Additional output

Video Conferencing

Video Encoder, AMDh264Encoder

Video Conferencing

OpenCL, gfx90c

Spreadsheets

OpenCL, gfx90c

System details

General

Operating System	Windows 10 Pro 64-bit 10.0.19045
Motherboard	HP 8B5C
Memory	15682 MB DDR4 @1598 Mhz
BIOS	HP V78 Ver. 01.04.01
System Drive Model	
Resolution	1366 x 768 px
Power plan	Equilibrado

Processor

CPU	AMD Ryzen 5 7530U with Radeon Graphics
Clock Frequency	2000 MHz
Max Frequency	2020 MHz
Processors	12
Cores	12x 1 (1)
Package	

Graphic adapters

GPU	AMD Radeon (TM) Graphics
Manufacturer	AMD/ATI
Dedicated Video Memory	
Total Available Graphics Memory	7841 MB
Core Clock	2000 MHz
Boost Clock	
Memory Clock	1333 MHz
Driver Version	31.0.21018.9001
Display 1	\\.\DISPLAY1 (1366 x 768, 100% DPI scaling)

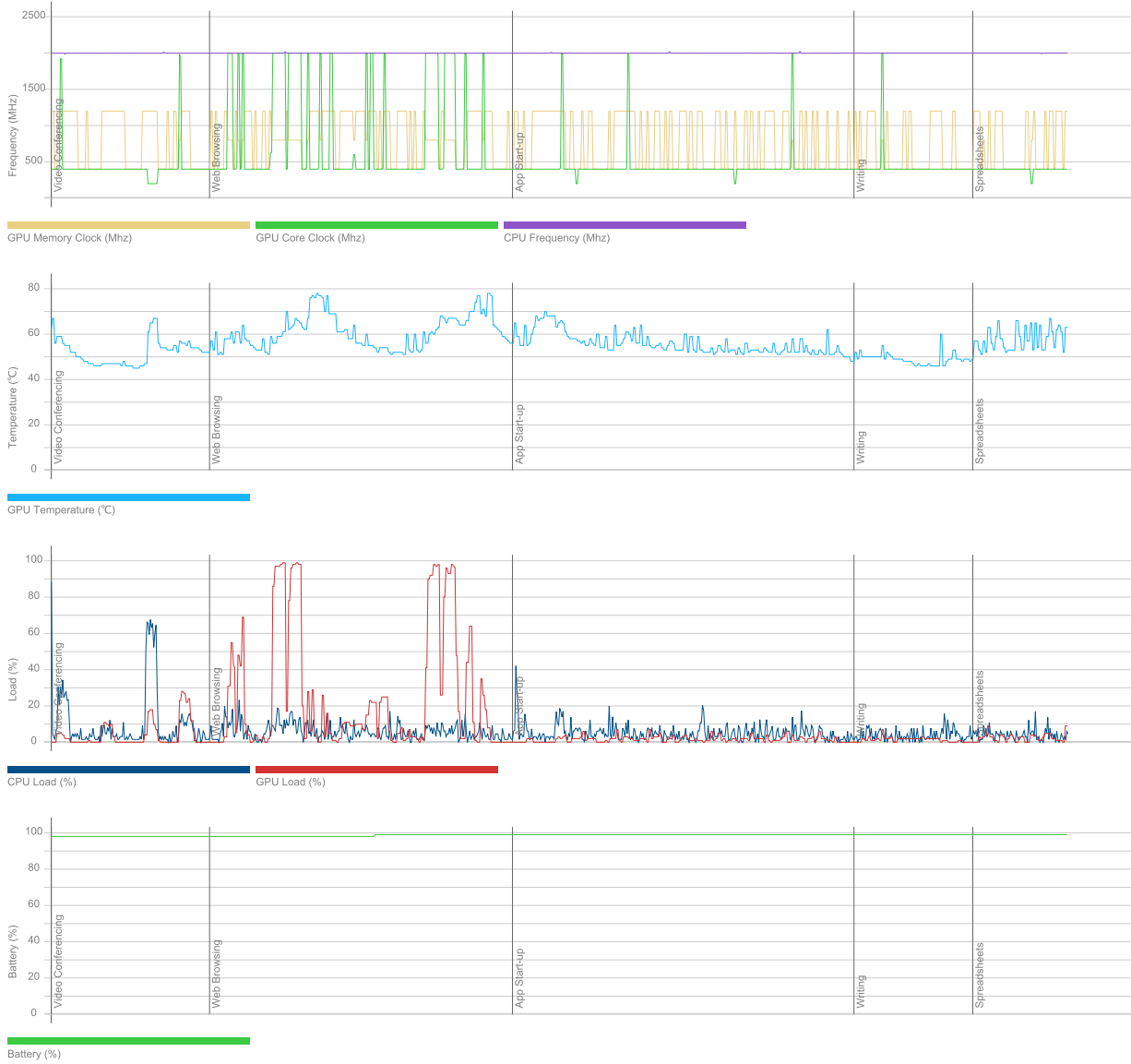
Storage devices

Drive 0	476 GB
Drive model	KBG50ZNV512G KIOXIA
Drive type	SSD
External drive	No (SCSI)
Partition 0	100 MB
Partition 1	C: (NTFS) 476 GB (423 GB free)
Partition 2	543 MB
Drive 1	115 GB
Drive model	Kingston DataTraveler 3.0 USB Device
Drive type	
External drive	Yes (USB)
Partition 0	D: (FAT32) 10,7 GB (8,8 GB free)
Partition 1	E: (NTFS) 104 GB (63,1 GB free)

Batteries

Battery	Primary
Manufacturer	Hewlett-Packard
Type	Unknown
Cycle count	1
Designed capacity	42772 mWh
Full charged capacity	43764 mWh
Wear level	-2,3%

Hardware monitoring



PCMark 10 Express

6 119

Essentials

10 660

Apps Start-up score

15 842

Video Conferencing Score

8 475

Web Browsing Score

9 024

Productivity

9 599

Spreadsheets Score

12 334

Writing Score

7 471

Validation

ERROR

Run information

Result name

DESKTOP-Q8HHOU5_2024-02-08 17:14:31.0

Result details

SystemInfo Version

5.30.850

UI Version

2.1.2506 64

Test Version

1.0

Date

February 8 2024

Duration

15 m 25 s

Id

b5a0f471-986c-4d7a-8b89-059e45fc31e3

Test settings

Default settings used

Yes

Additional output

Video Conferencing

Video Encoder, AMDh264Encoder

Video Conferencing

OpenCL, gfx90c

Spreadsheets

OpenCL, gfx90c

System details

General

Operating System	Windows 10 Pro 64-bit 10.0.19045
Motherboard	HP 8B5C
Memory	15682 MB DDR4 @1598 Mhz
BIOS	HP V78 Ver. 01.04.01
System Drive Model	
Resolution	1366 x 768 px
Power plan	Equilibrado

Processor

CPU	AMD Ryzen 5 7530U with Radeon Graphics
Clock Frequency	2000 MHz
Max Frequency	2148 MHz
Processors	12
Cores	12x 1 (1)
Package	

Graphic adapters

GPU	AMD Radeon (TM) Graphics
Manufacturer	AMD/ATI
Dedicated Video Memory	
Total Available Graphics Memory	7841 MB
Core Clock	2000 MHz
Boost Clock	
Memory Clock	1333 MHz
Driver Version	31.0.21018.9001
Display 1	\\.\DISPLAY1 (1366 x 768, 100% DPI scaling)

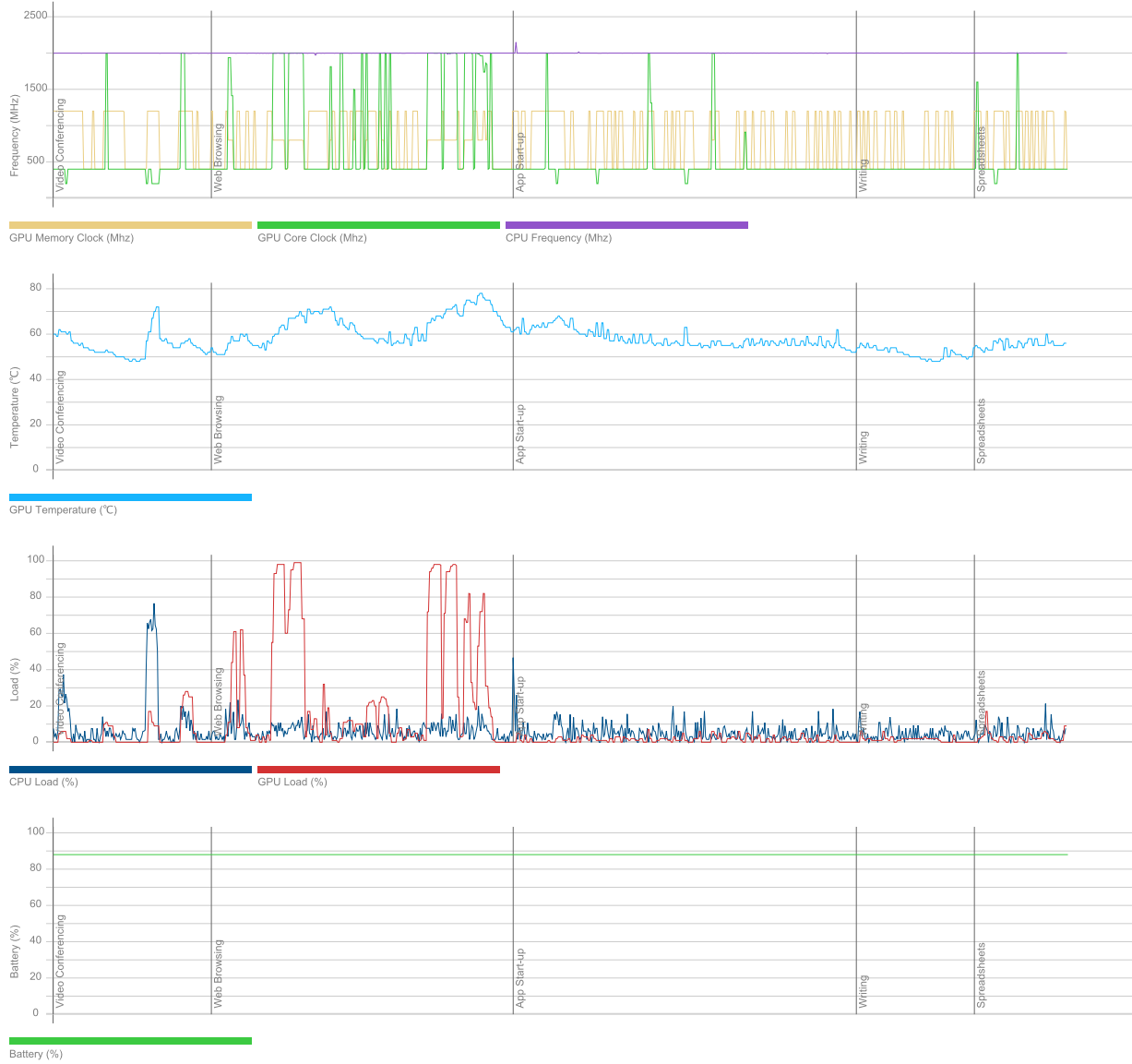
Storage devices

Drive 0	476 GB
Drive model	KBG50ZNV512G KIOXIA
Drive type	SSD
External drive	No (SCSI)
Partition 0	100 MB
Partition 1	C: (NTFS) 476 GB (423 GB free)
Partition 2	543 MB

Batteries

Battery	Primary
Manufacturer	Hewlett-Packard
Type	Unknown
Cycle count	1
Designed capacity	42772 mWh
Full charged capacity	43411 mWh
Wear level	-1,5%

Hardware monitoring



PCMark 10 Express

6 115

Essentials	10 650
Apps Start-up score	15 838
Video Conferencing Score	8 451
Web Browsing Score	9 026
Productivity	9 595
Spreadsheets Score	12 395
Writing Score	7 429

Validation VALID

Run information

Result name DESKTOP-QQCUU7K_2024-02-08 17:14:31.0

Result details

SystemInfo Version 5.30.850
UI Version 2.1.2506 64
Test Version 1.0
Date February 8 2024
Duration 15 m 25 s
Id a9634643-5801-4887-95b5-458b82aee9a5

Test settings

Default settings used Yes

Additional output

Video Conferencing Video Encoder, AMDh264Encoder
Video Conferencing OpenCL, gfx90c
Spreadsheets OpenCL, gfx90c

System details

General

Operating System	Windows 10 Pro 64-bit 10.0.19045
Motherboard	HP 8B5C
Memory	15682 MB DDR4 @1598 Mhz
BIOS	HP V78 Ver. 01.04.01
System Drive Model	
Resolution	1366 x 768 px
Power plan	Equilibrado

Processor

CPU	AMD Ryzen 5 7530U with Radeon Graphics
Clock Frequency	2000 MHz
Max Frequency	2000 MHz
Processors	12
Cores	12x 1 (1)
Package	

Graphic adapters

GPU	AMD Radeon (TM) Graphics
Manufacturer	AMD/ATI
Dedicated Video Memory	
Total Available Graphics Memory	7841 MB
Core Clock	2000 MHz
Boost Clock	
Memory Clock	1600 MHz
Driver Version	31.0.21018.9001
Display 1	\\.\DISPLAY1 (1366 x 768, 100% DPI scaling)

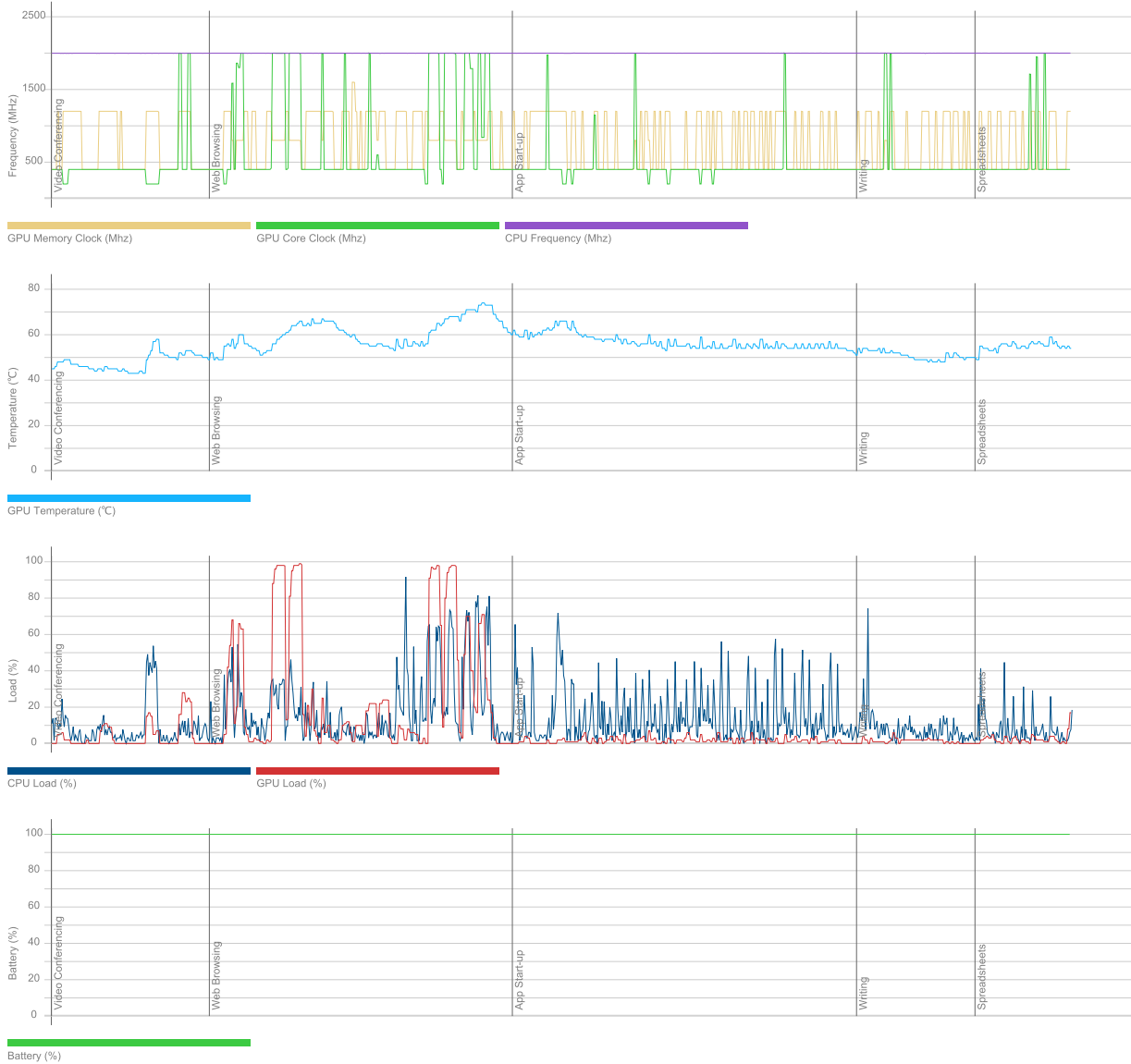
Storage devices

Drive 0	476 GB
Drive model	KBG50ZNV512G KIOXIA
Drive type	SSD
External drive	No (SCSI)
Partition 0	100 MB
Partition 1	C: (NTFS) 476 GB (421 GB free)
Partition 2	543 MB

Batteries

Battery	Primary
Manufacturer	Hewlett-Packard
Type	Unknown
Cycle count	1
Designed capacity	42772 mWh
Full charged capacity	43764 mWh
Wear level	-2,3%

Hardware monitoring



PCMark 10 Express

6 121

Essentials

10 600

Apps Start-up score

15 746

Video Conferencing Score

8 418

Web Browsing Score

8 987

Productivity

9 658

Spreadsheets Score

12 568

Writing Score

7 423

Validation

VALID

Run information

Result name

DESKTOP-S6SL2U5_2024-02-08 12:14:22.0

Result details

SystemInfo Version

5.30.850

UI Version

2.1.2506 64

Test Version

1.0

Date

February 8 2024

Duration

15 m 26 s

Id

a0c849a8-7983-44d5-a021-9898de4a3b18

Test settings

Default settings used

Yes

Additional output

Video Conferencing

Video Encoder, AMDh264Encoder

Video Conferencing

OpenCL, gfx90c

Spreadsheets

OpenCL, gfx90c

System details

General

Operating System	Windows 10 Pro 64-bit 10.0.19045
Motherboard	HP 8B5C
Memory	15682 MB DDR4 @1598 Mhz
BIOS	HP V78 Ver. 01.04.01
System Drive Model	
Resolution	1366 x 768 px
Power plan	Equilibrado

Processor

CPU	AMD Ryzen 5 7530U with Radeon Graphics
Clock Frequency	2000 MHz
Max Frequency	2018 MHz
Processors	12
Cores	12x 1 (1)
Package	

Graphic adapters

GPU	AMD Radeon (TM) Graphics
Manufacturer	AMD/ATI
Dedicated Video Memory	
Total Available Graphics Memory	7841 MB
Core Clock	2000 MHz
Boost Clock	
Memory Clock	1600 MHz
Driver Version	31.0.21018.9001
Display 1	\\.\DISPLAY1 (1366 x 768, 100% DPI scaling)

Storage devices

Drive 0	476 GB
Drive model	KBG50ZNV512G KIOXIA
Drive type	SSD
External drive	No (SCSI)
Partition 0	100 MB
Partition 1	C: (NTFS) 476 GB (421 GB free)
Partition 2	543 MB

Batteries

Battery	Primary
Manufacturer	Hewlett-Packard
Type	Unknown
Cycle count	1
Designed capacity	42772 mWh
Full charged capacity	43764 mWh
Wear level	-2,3%

Hardware monitoring



PCMark 10 Express

6 202

Essentials

10 869

Apps Start-up score

16 774

Video Conferencing Score

8 464

Web Browsing Score

9 045

Productivity

9 671

Spreadsheets Score

12 513

Writing Score

7 476

Validation

VALID

Run information

Result name

DESKTOP-USUTJEL_2024-02-08 11:05:43.0

Result details

SystemInfo Version

5.30.850

UI Version

2.1.2506 64

Test Version

1.0

Date

February 8 2024

Duration

15 m 22 s

Id

286a3525-fe5b-49cd-a2ff-7e95cfbf60dc

Test settings

Default settings used

Yes

Additional output

Video Conferencing

Video Encoder, AMDh264Encoder

Video Conferencing

OpenCL, gfx90c

Spreadsheets

OpenCL, gfx90c

System details

General

Operating System	Windows 10 Pro 64-bit 10.0.19045
Motherboard	HP 8B5C
Memory	15682 MB DDR4 @1598 Mhz
BIOS	HP V78 Ver. 01.04.01
System Drive Model	
Resolution	1366 x 768 px
Power plan	Equilibrado

Processor

CPU	AMD Ryzen 5 7530U with Radeon Graphics
Clock Frequency	2000 MHz
Max Frequency	2003 MHz
Processors	12
Cores	12x 1 (1)
Package	

Graphic adapters

GPU	AMD Radeon (TM) Graphics
Manufacturer	AMD/ATI
Dedicated Video Memory	
Total Available Graphics Memory	7841 MB
Core Clock	2000 MHz
Boost Clock	
Memory Clock	1600 MHz
Driver Version	31.0.21018.9001
Display 1	\\.\DISPLAY1 (1366 x 768, 100% DPI scaling)

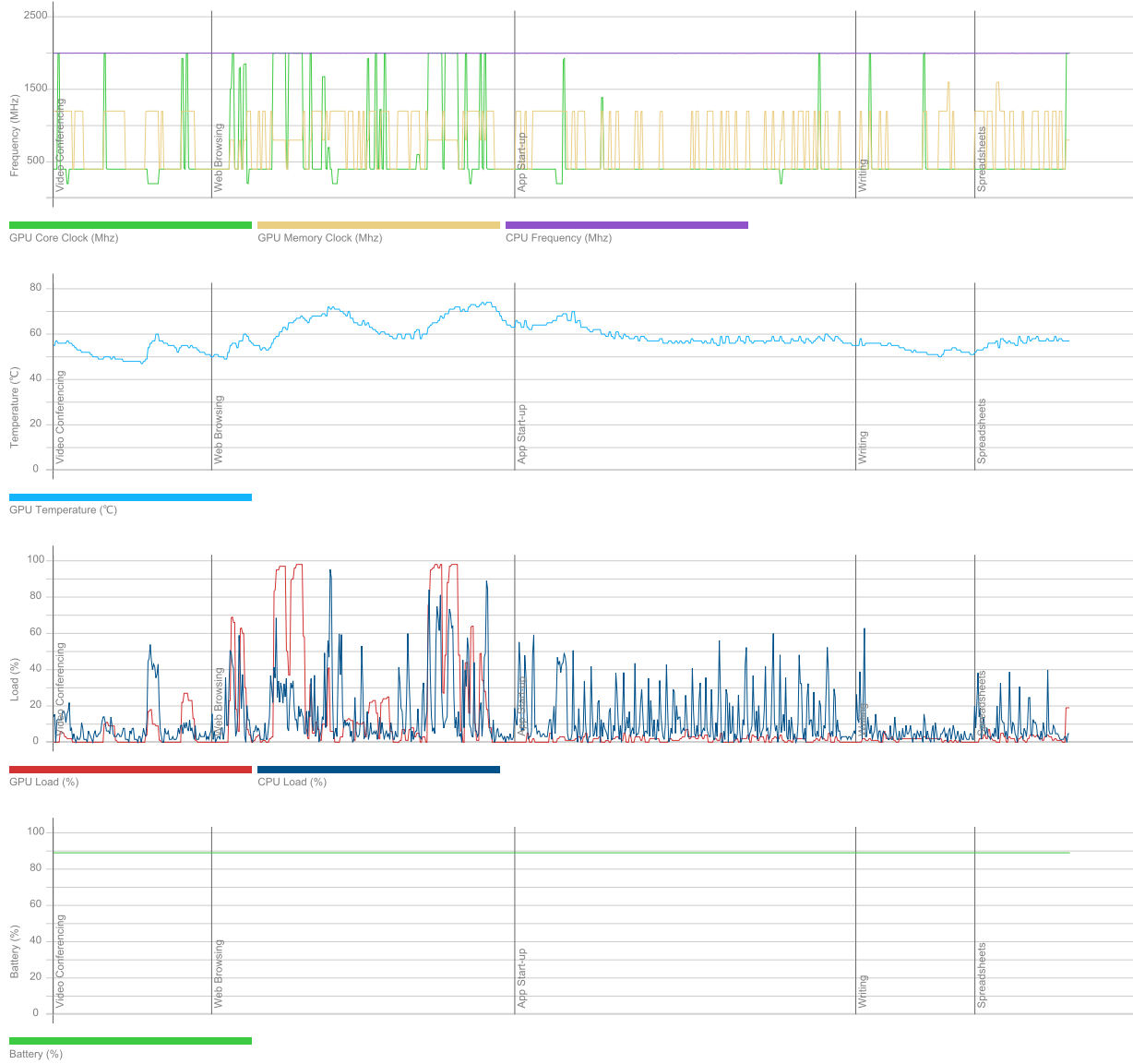
Storage devices

Drive 0	476 GB
Drive model	KBG50ZNV512G KIOXIA
Drive type	SSD
External drive	No (SCSI)
Partition 0	100 MB
Partition 1	C: (NTFS) 476 GB (421 GB free)
Partition 2	543 MB

Batteries

Battery	Primary
Manufacturer	Hewlett-Packard
Type	Unknown
Cycle count	1
Designed capacity	42772 mWh
Full charged capacity	43764 mWh
Wear level	-2,3%

Hardware monitoring



PCMark 10 Express

6 243

Essentials

10 916

Apps Start-up score

16 850

Video Conferencing Score

8 483

Web Browsing Score

9 102

Productivity

9 758

Spreadsheets Score

12 616

Writing Score

7 548

Validation

ERROR

Run information

Result name

DESKTOP-VRSMUJR_2024-02-08 12:14:09.0

Result details

SystemInfo Version

5.30.850

UI Version

2.1.2506 64

Test Version

1.0

Date

February 8 2024

Duration

15 m 21 s

Id

5c4aef47-3756-4d55-a9e7-abc8b30451ec

Test settings

Default settings used

Yes

Additional output

Video Conferencing

Video Encoder, AMDh264Encoder

Video Conferencing

OpenCL, gfx90c

Spreadsheets

OpenCL, gfx90c

System details

General

Operating System	Windows 10 Pro 64-bit 10.0.19045
Motherboard	HP 8B5C
Memory	15682 MB DDR4 @1598 Mhz
BIOS	HP V78 Ver. 01.04.01
System Drive Model	
Resolution	1366 x 768 px
Power plan	Equilibrado

Processor

CPU	AMD Ryzen 5 7530U with Radeon Graphics
Clock Frequency	2000 MHz
Max Frequency	2012 MHz
Processors	12
Cores	12x 1 (1)
Package	

Graphic adapters

GPU	AMD Radeon (TM) Graphics
Manufacturer	AMD/ATI
Dedicated Video Memory	
Total Available Graphics Memory	7841 MB
Core Clock	2000 MHz
Boost Clock	
Memory Clock	1600 MHz
Driver Version	31.0.21018.9001
Display 1	\\.\DISPLAY1 (1366 x 768, 100% DPI scaling)

Storage devices

Drive 0	476 GB
Drive model	KBG50ZNV512G KIOXIA
Drive type	SSD
External drive	No (SCSI)
Partition 0	100 MB
Partition 1	C: (NTFS) 476 GB (414 GB free)
Partition 2	543 MB

Batteries

Battery	Primary
Manufacturer	Hewlett-Packard
Type	Unknown
Cycle count	1
Designed capacity	42772 mWh
Full charged capacity	43491 mWh
Wear level	-1,7%

Hardware monitoring



PCMark 10 Express

6 186

Essentials

10 860

Apps Start-up score

16 731

Video Conferencing Score

8 442

Web Browsing Score

9 070

Productivity

9 629

Spreadsheets Score

12 540

Writing Score

7 395

Validation

VALID

Run information

Result name

DESKTOP-JTRG4BF_2024-02-08 16:04:56.0

Result details

SystemInfo Version

5.30.850

UI Version

2.1.2506 64

Test Version

1.0

Date

February 8 2024

Duration

15 m 24 s

Id

508baf89-d8a8-4e04-8587-8841f8303f5d

Test settings

Default settings used

Yes

Additional output

Video Conferencing

Video Encoder, AMDh264Encoder

Video Conferencing

OpenCL, gfx90c

Spreadsheets

OpenCL, gfx90c

System details

General

Operating System	Windows 10 Pro 64-bit 10.0.19045
Motherboard	HP 8B5C
Memory	15682 MB DDR4 @1598 Mhz
BIOS	HP V78 Ver. 01.04.01
System Drive Model	
Resolution	1366 x 768 px
Power plan	Equilibrado

Processor

CPU	AMD Ryzen 5 7530U with Radeon Graphics
Clock Frequency	2000 MHz
Max Frequency	2017 MHz
Processors	12
Cores	12x 1 (1)
Package	

Graphic adapters

GPU	AMD Radeon (TM) Graphics
Manufacturer	AMD/ATI
Dedicated Video Memory	
Total Available Graphics Memory	7841 MB
Core Clock	2000 MHz
Boost Clock	
Memory Clock	1600 MHz
Driver Version	31.0.21018.9001
Display 1	\\.\DISPLAY1 (1366 x 768, 100% DPI scaling)

Storage devices

Drive 0	476 GB
Drive model	KBG50ZNV512G KIOXIA
Drive type	SSD
External drive	No (SCSI)
Partition 0	100 MB
Partition 1	C: (NTFS) 476 GB (421 GB free)
Partition 2	543 MB

Batteries

Battery	Primary
Manufacturer	Hewlett-Packard
Type	Unknown
Cycle count	1
Designed capacity	42772 mWh
Full charged capacity	43753 mWh
Wear level	-2,3%

Hardware monitoring

